

THE OWL MANAG

Spring 2016 ❖ www.BensalemOwls.org

From The President's Desk by Ray Guim, '74



Dear Alumni,

Welcome to 2016! Can you believe it's a new year already? The more that time goes by, the wiser I get—or so it seems!

First, thank you to all of the 2015 dues-paying members! Without your support, we wouldn't have been able to give out \$12,500 in scholarships last year. To continue supporting our Bensalem seniors, be sure to send your \$12 dues today (see attached form).

We have an announcement to make: we've had a change in the association! Our new vice president is Linda Panuccio '72. Linda has been with the organization for many years and has always been an incredible support. I'm sure she'll do great things in this position. Linda will be stepping into the shoes of Margie Knowles '82, our outgoing vice president. Margie has also been an invaluable team member these past years. We could always count on her to let us know what needed to be done. Thank you, Margie, and welcome, Linda!

If you haven't been to our website in a while, be sure to log in, update your information, and check out the new changes. Our site recently got a great overhaul from our Webbies! We're also getting close to having 6,000 profiles on our site which is over 21% of all Bensalem High School attendees. Yes, attendees, not just grads: if you know someone who went to BHS but for whatever reasons had to leave, we still consider him or her an alum, too. Once an owl, always an owl!

Additionally, the next phase of the yearbook project is about to get started. We will take every yearbook and make it available on our website for all members to see. This is another huge project (are they any other kind?!) so we're not sure when it will be completed. Nonetheless, we're hoping that when we get the ball rolling, it will go quickly.

Another project that our board is trying to achieve is to have a veterans' wall at the high school: a place to post the name of anyone who

Continued on page 3

Annual BAA Scholarship Golf Outing



~ See p. 2

June 15 2016 ~ Bensalem Twp. County Club

“Owl Walk” Bricks on Sale

A commemorative brick walkway called “Owl Walk” will be installed near the main entrance of Bensalem High School in 2017 during the final phase of an estimated \$80 million overhaul of the school complex off Hulmeville Road, officials said.

The Bensalem Education Foundation, in partnership with the Bensalem Alumni Association, is taking orders for the commemorative bricks, which will be created by Bricks R Us, project organizers said.

The bricks can be used to recognize a BHS graduate, convey appreciation or gratitude to parents or school staff members, honor a classmate or

memorialize someone, they said.

Two sizes of natural gray bricks are being sold. A 4-inch by 8-inch brick costs \$100 and can be inscribed with up to three lines of 18 characters each. The characters include spaces and symbols. In addition, an 8-inch by 8-inch brick costs \$200 and can be inscribed with up to six lines of 18 characters each.

Proceeds from the brick sale will benefit the school library. Call 215-750-2800 or go to www.bensalemsd.org/BEF for more information about the “Buying Bricks for Owl Walk” initiative.

~ Bucks County Courier Times,
12/24/15



29th Annual Golf

Wednesday, June 15, 2016

*Bensalem Township
Country Club*

Our annual golf outing is open to all Bensalem HS alumni and their guests. The \$120/golfer registration fee includes: golf w/ cart, coffee & doughnuts in the morning, soft pretzels, soft drinks, water and beer on the course. Swing shot prints of all golfers are also included, with swing shot video's online at www.SwingMan.Smug.com. Prizes for every golfer are awarded at the buffet lunch immediately after the tournament.

Proceeds support our scholarship fund, which awards scholarships to seven deserving Bensalem High School seniors each year. To register as a golfer and/or a sponsors, visit www.BensalemOwls.org.

*To register or for more information,
visit our website ~ www.BensalemAlumni.org*

THE OWLMANAC

Spring 2016 ❖ www.BensalemOwls.org

THE OWLMANAC is published by the Bensalem Alumni Association, Inc., P.O. Box 26, Bensalem, PA 19020. Copyright © 2016 by the Bensalem Alumni Association, Inc. Reproduction of any part of this newsletter is forbidden without written permission.

Unsolicited alumni news and pictures are accepted, but must be accompanied by a self-addressed stamped envelope to be returned. The Bensalem Alumni Association, Inc. cannot be held responsible for loss or damage of unsolicited material.

*The official newsletter of the Bensalem Alumni Association, Inc.
a non-profit association since 1986*

Bensalem Alumni Association 2016 Board of Directors

President **Ray Guim**, '74
Vice President..... **Linda Prindle Panuccio** '72
Treasurer **Wayne Lewis** '62
Secretary, Newsletter Coordinator..... **John Paone** '79
Website Coordinator **Bob Bell, III** '70
Golf Committee..... **Jim Bogan** '67 & **Mike Deering** '71

Bensalem Alumni Association, Inc. • P.O. Box 26 • Bensalem, PA 19020

Alumni Tournament

2015 GOLF OUTING SPONSORS

James Heistand '77 ~ Newtown Roofing
 Mary Stauring, '74 ~ Paperless Solutions
 Bensalem Auto Tags
 Timothy Kohler '84 ~ Kohler Associates
 Dylan Lynn, '72 ~ Ridge Auto
 Michael Pigott, '95 ~ Michael Pigott Agency
 Nancy Anderson, '70 ~ Retired Bensalem Teachers
 Bob Carp, '70 ~ Nuss Construction
 Keith Crawford, '71 ~ Eagle Industrial Hygiene
 Steve D'Andrea, '72 ~ D'Andrea Brothers Concrete
 Dave DeBonaventura ~ Chancey Country Gardens
 Diane Flaherty ~ All Service Abstract
 Harris Blacktopping
 Ed Zielanski, '70 ~ Resolve Adjustment
 Ed Waibel, '73 ~ Ed's Auto Repair
 Shawn Smith, '76 ~ Shawn Smith Auto Body
 Mat Slakoper ~ Mat's Pharmacy
 Jack's Catering
 Tommy Tomlinson, '64 ~ Tomlinson Funeral Home
 Eugene DiGiralamo ~ Representative DiGiralamo

*There's Still Time To Get
On This Year's List!*



President's Desk

Continued from page 1

served our country in a military function. We're still working out the details, so if anyone has any expertise on this subject, we would appreciate the help.

If you've been wondering about the All-Year Reunion, we have scheduled a date of September 10, 2015 at Bensalem Township Country Club for a picnic. We will have hot dogs, hamburgers, chicken and salads with soft drinks. The cost will be free to dues-paying members. Dues are \$12. Be sure to stop by to see some old friends and maybe make some new acquaintances.

Finally, the annual golf outing will be held June 15, 2016 at Bensalem Township Country Club. It's a blast every year, and everyone that comes out has a great time!

Be sure to stay tuned to our web site! We send regular emails and keep everyone up-to-date on our message board.

Take care for now

Ray

more
is less



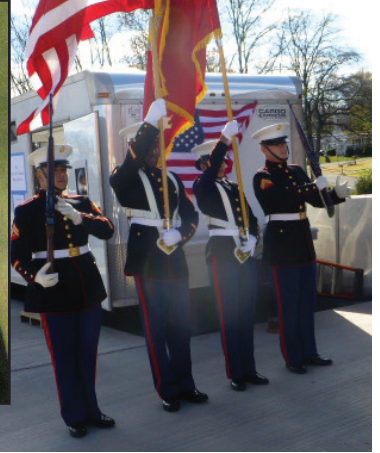
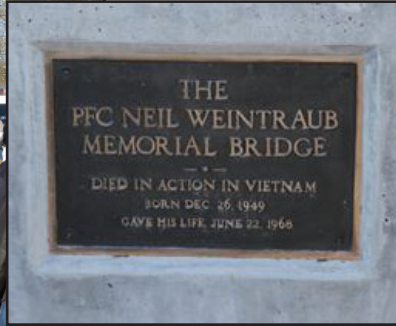
Enjoy top-quality amenities & services at the Radisson Hotel Philadelphia Northeast. Our 274 spacious hotel rooms, 20,000 square feet of event space and prime location make the Radisson a perfect venue for: Reunions, Weddings, Social or Corporate functions.

Book your event or group block today and see what makes the Radisson one of the best hotels in the Northeast Philadelphia / Bucks County area.

Radisson Hotel Philadelphia
 Northeast
 2400 Old Lincoln Highway
 Trevose, PA 19053
 +1 (215) 638-8300
radisson.com/trevosepa

Radisson
 PHILADELPHIA
 NORTHEAST

Twp. Bridge Re-dedicated for Marine Alum



A township bridge honoring Private First Class Neil Weintraub ('67) was rededicated in November, 2015, keeping alive the memory of a Bensalem High School graduate who gave the ultimate sacrifice for his country.

More than 250 family, friends and community members and leaders gathered for the ceremony on the bridge on Bensalem Boulevard, between New Falls Road and Leonard Avenue. There were also engines from the Union and Nottingham Fire Departments an official Marine Corps Color Guard presentation of the Colors, a 21-gun salute, and a fly over of a U.S. Coast Guard HH-65 Dolphin helicopter.

"He was a little bit younger than me when we were kids, but we grew up in the same neighborhood, and you just don't forget a guy like Neil," said PA State Senator Tommy Tomlinson, who remembered Neil as an all-American boy. "He wasn't a real big kid – we had a saying when we played football that sometimes you had to play 20 pounds more than you were. Well, Neil played bigger than he was, and he fought for his country bigger than he was."

"For me to look out and see everyone coming out, and all the support we are getting, it's a good feeling," said



"It's been more than 50 years and so many of us still remember Neil. I think that speaks as to the type of guy he was. He was a real hero."

PA State Senator Tommy Tomlinson

Tomlinson. "It's been more than 50 years and so many of us still remember Neil. I think that speaks as to the type of guy he was. He was a real hero."

"The PFC Neil William Weintraub Memorial Bridge" was originally dedicated in 1969, but had been closed for renovations.

"When we heard the bridge was closed, Neil's friend George Delia, who is a Vietnam combat veteran, contacted Lee Cannon, who is also a Vietnam combat veteran, and me," said Brenda

Hecklin, one of the event organizers. "(George) wanted to have a re-dedication ceremony for him so he could honor his service and sacrifice. It was important to us because it was the only bridge that crossed over the Pennsylvania Turnpike named for a veteran, so by extension it also honors all veterans."

According to US Marine information, PFC Weintraub, a mortarman, was among several Marines killed during the Tet Offensive in Vietnam in June, 1968. He was 18 years old, and had been in Vietnam less than two months.

"He will never be forgotten," said Hecklin. "This bridge keeps his memory alive, and stands as a symbol of remembrance to all who see it."

Information appearing here was gathered from a story by Cpl. Matt Myers on the official USMC website (<http://www.mcrc.marines.mil/1stmcd/News/NewsArticleDisplay/tabid/9998/Article/630928/vietnam-marine-from-bensalem-honored-during-bridge-re-dedication.aspx>)

We're Growing!

Newly renovated cafeteria!



BHS... Looking Good!

Newly renovated auditorium!



Bensalem, Alum Tamm Receive Commemorative Super Bowl Football

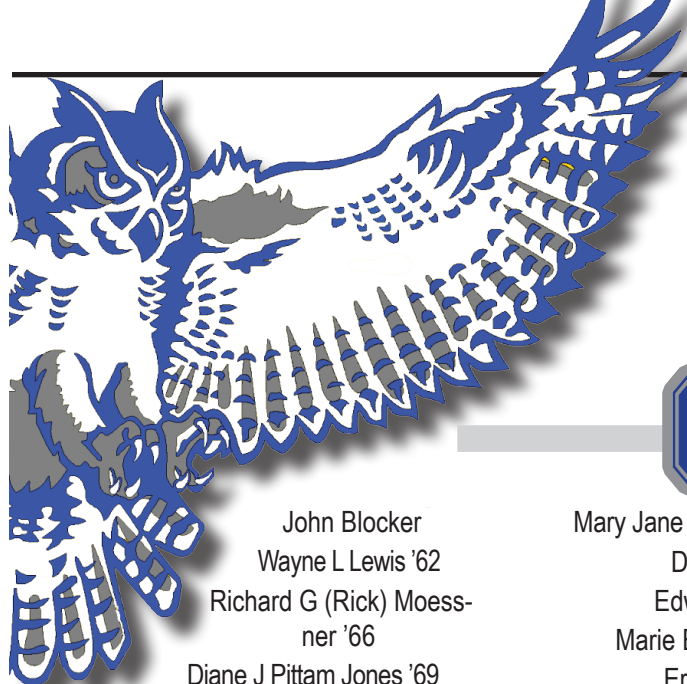
As part of its "On the Fifty" program to celebrate the 50th Super Bowl, the National Football League has donated to commemorative "Golden Football" to every high school that has had a player on an active Super Bowl roster. Bensalem's Super Bowl representative is offensive lineman Ralph Tamm, ('84), a member of two Super Bowl championship teams, Washington in Super Bowl XXVI and San Francisco in Super Bowl XXIX.



Advertise in THE OWLMANAG

Rates: Business Card - \$25; Quarter Page - \$40; Half Page - \$70; Full Page - \$130

Your ad appears in both the print and online versions. For more information, please contact:
Ray Guim at President@BensalemAlumni.org or by mail: BAA, PO Box 26, Bensalem, PA 19020.



THE OWL

GREY OWL

(\$25-\$49 + dues)

John Blocker
Wayne L Lewis '62
Richard G (Rick) Moessner '66
Diane J Pittam Jones '69
J Dylan Lynn '72
Doris Lynn Ridge '72
Michele M Orner Bythean '82
Candace E James Feehan '66
George J DiYenno '60
Terry L Mavroudis Moyer '79
Edward M Pfender '68
Katherine A (Katie) Gesaualdi DiSanto '51
Evelyn M Gross Muth '43
Francis W (Frank) Walsh '63
Sandra Newkirk Day '55
Joseph (Edward) Balderstone '49
Edwin R Catanach '55
Ronald W Decker '65

Mary Jane McLaren Vandegrift '49
Danny Pannulla
Edward A Laiss '51
Marie Burnell Gardiner '63
Erma H Rupp '53
Carol J Laich Powell '64
William W McKinney '66
Patricia Marks Ferguson '72
Linda B Petit Blaszczyk '68
Diane R Leighton Vogel '69
Albert Baker '63
Virginia A Clifford Wharton '60
William H States III '58
Judy C Schreiber Carson '65
Patricia A Malloy Tither '54
Peggy A Foley Parker '61
Alice J Scheer Sperling '45
Mark J Lecuyer Jr '73
Doreen L Maisano Lynn '68

Patricia R Grady '72
Russell Struble '53
Judith Struble Beldin '53
Carolyn R Shindler Funke '66
Meredith A Calien Wheeler '74
Kathleen Dougherty Simmons '75
Dennis B Lautenbacher '61
Mary Anne Trapp Ashton
Christian C Heine
Carolynne D'Aquino
Alan R Jenkins '83
Tammy L Jenkins Rarick '82
Betty Ann Brandt Allen '49
Judith Bartels Petrick '65
Kevin Wyrauch '72
Frances Murawski Piotrowski
Margaret (Peggy) Thullen VanSant '61
Kevin Wyrauch '72
Bill Kohler '81

BLUE OWL

(\$50-\$99 + dues)

Michael Mallon '93
James W Tomlinson '61
Joanne C Shafter Christian '71
James Gentile '74
John M "Shetzline, Sr" '56
Joyce F Smith Thomas '63
Rose Rybas Scull '46
Robert W Reif '51
Eleanor Scheidegg Kuhns '55
Teddy T Saiki '46
Marjorie H Hodgson Hughes '60

Charles (Chuck) Lebold '66
Charles J Morton '60
Anita K Morton Kristiniak '64
Kathy T Quinn Tomlinson '66
Kathleen P Murphy '70
Gerald J (Jerry) Weikel '57
Thornton E "Wagner, Jr" '66
Joe MacAdams
Kenn Hughes
G Eileen Keener
Keith Crawford

Nancy L Anderson Ashton
David Dallas
Linda Ashton Price '68
Joy M Black '74
Cathy Monroe Rhoads '76
Lynda Alexander Eneke '60
Patricia Giannone Franecki '75
Patti Wilcox Gaul '74
Steven J Hovick '73
Betty A Kennedy Geschwendt '56

LIFETIME MEMBER

(\$500 - up)

Steven Geiges '74
Bruce Gramiak
Mike Gramiak
Diane Sills Muller
Robert A Milner '62

CLUB

GOLD OWL

(\$500 - up)

Glenn R Sykes '77
James Bogan
Joel Weinbach '82
Dennis Moessner '71
Denise C Leckerman Ragnoli '84
Richard F Patton '61
John F Dornisch '67
James A Hartz '65
Kelly Bianucci Quann 2003
Karen Lilik Shastay '70
Michael Rigney '74
Brian K Spang '72
Harry M Thorpe Jr '61
Patricia Allahand '60
Brian K Bostic '77
Stephen A D'Andrea '72
Charles E Hicks '74
Eileen Harner
Gordon Larson '65
David F DeBonaventura '77
Deanann A Hinkin '65
Virginia Lee Mingle Adams '60
Mary Anne Battaglia Nolan '71
Leonore I Hope Bell '72
Ray Guim '74
Leah Neri Hesson '75
Howard Bates '50
Lee H Freeman '56

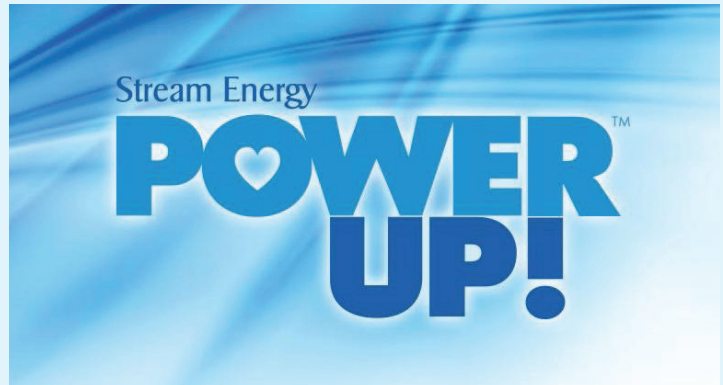
*"Once an Owl,
Always an Owl!"*

*To Everyone
Who Has Donated...*
THANK YOU!

We do our best to make sure those who help us achieve our mission are recognized, but sometimes a name or two may not appear where it should in print. To those we say "we're sorry!"

Please visit www.BensalemAlumni.org
for a complete list, and let us know if anyone is missing!

*And here's another way
to support the BAA...*



The Bensalem Alumni Association has partnered with Stream Energy's unique **Power Up! Program** to help raise scholarship funds, by paying us monthly commissions when our supporters enroll for their electricity or natural gas service through the BAA. ***There's no extra out-of-pocket cost for you,*** and we benefit on an ongoing monthly basis.

Please go to <http://bensalemalumni.streampowerup.biz/> to learn more about Stream Energy, and see how you can help us raise funds while possibly lowering your energy bill. It's a win-win for all! Questions? Contact John Paone '79 (jspaone@yahoo.com).

***Sign up
TODAY!***

<http://BensalemAlumni.streampowerup.biz>

Save The Date!

BAA All-Year Reunion

September 10, 2015

**Bensalem Twp.
Country Club**

***Hot Dogs, Hamburgers,
Chicken and Salads
w/ Soft Drinks. Free
to dues-paying members!***

See You There!

Looking Sporty!



Golf team gets BAA Back Packs!



Just 4 Laughs Photobooth, LLC

Turning life's moments into fun memories!

Serving Burlington and Mercer County NJ and Lower Bucks County PA



<http://www.just4laughsphotoboothrental.com>

609-386-8822



~ In Memory ~

Love, Laughter, Courage

By J.D. Mullane

~ reprinted from *The Bucks County Courier Times*

It was a June night and I was in my sweltering city apartment with three college roommates, broke and bored. Until the phone rang. It was a friend, Cheryl Wallace, and when I explained our plight, she instantly invited us to her parents' house in Bensalem, PA.

"Bring beer," she said.

Scrounging cash, we bought a case and headed to Bucks County. Arriving, we realized there was no ice to keep the brew chilled. Cheryl had a new blue Pontiac Grand Prix and, eager to show it, took me with her on a run for ice. We pulled up to the store and "Dancing in the Moonlight" by King Harvest came on the radio. The night was soft and clear.

Cheryl said, "We gotta dance!"

What?

She turned up the volume and got out of the car.

"Come on," she said.

So we danced, right there in the parking lot, with people coming and going. It's true what King Harvest sings: You can't dance and stay uptight.

We imitated Bruce Springsteen's dance move in "Dancing in the Dark," a music video then in rotation on MTV.

But it wasn't until we spun around that we noticed a Bensalem police officer standing there, arms folded. We stopped dancing and Cheryl cupped her hands over her mouth, trying not to laugh. I just stood there like a dope. The cop shook his head, turned and left. We got the ice and drove back, laughing.

That was not the first time, or the last, that Cheryl Wallace Doan was able to get me to do something completely out of character. Such as dancing the Time Warp at "The Rocky Horror Picture Show" on two occasions. Or racing wheeled office chairs down a corridor toward a toilet paper finish line in the Student Union (today the Rollins Center) at Bucks County Community College. Or seeing who could slide faster down a sliding board, hands overhead, at Samuel K. Faust Elementary, the school she attended as a child while growing up in Nottingham, PA.

That was Cheryl's gift, coaxing playfulness, and best was the happy memory it left. It's what I'll miss most. She died Wednesday after a heroic 8-year fight with breast cancer. She was 52, and leaves her husband, Ron, and five sons.

We met at the community college 34 years ago. She wanted to be a radio disc jockey, I was studying business administration, but later came to my senses and switched to journalism.

That June at her house, the bunch of us talked and laughed into the small hours. The memory is burnished. Kept fresh through reminiscence, that long ago night doesn't seem so long ago.

Cheryl loved life. She fought the cancer, hard. A picture was posted on Facebook of her at St. Mary Medical Center in a hospital gown, dukes up.

No matter who you were, she was always curious about you, your ideas, your plans. Almost 30 years ago she asked me if — besides writing, airplanes and motorcycles

— there was anything that interested me.

"Astronomy," I said.

She kept after me about that for a couple of years, asking, "Did you ever get around to that astronomy?" Eventually I did, and studied until I could read the night sky.

Rolling from youth to middle age, we kept in touch. These last two years we met for lunch every month or so and, as always, discussed kids and family and life. I cannot recall any conversation with her that didn't have laughter. I asked how, with the pain of chemo, losing her hair, feeling her mortality, she kept so upbeat. Without hesitating she counted on three fingers, "God first, others second, me last."

That was the last time we talked.

Wednesday evening, I grabbed some beers from the fridge. As always at times like this, I found myself outside, alone, looking up into the night sky, asking questions with no answers. Why did she have to die? And suffer? And her family suffer?

The night was soft and clear.

Up there, blazing in the darkness, was Venus commencing its nightly descent in the western sky. Nearby was Jupiter, jovial god of the ancients. Next to it, Regulus, flickering blue and white, marking the heart of the lion in the Leo constellation.

Love, laughter, courage.

That's Cheryl for sure.

J.D. Mullane can be reached at 215-949-5745 or jmullane@calkins.com. Twitter: @jdmullane

1938 Clara B. Stenberg Miehle

1949 Walter W. Frederick

1949 William P. Brucks

1950 Roberta Redwitz Bachman

1951 Frances V. Piotrowski Murawski

1951 Mary Virginia Lappan Stallone

1953 June Guerra Hartman

1954 Edward W. Rutecki

1955 Robert Kee

1955 Frank E. Leshner

1955 Harry E. Loessy

1956 Harriet C. Durr Hoshorian

1957 Norma Gaugler Murray

1958 Thackery K. Bullock

1964 Gerard P. Laich

1965 Lynda L. Reynolds O'Shaughnessy

1966 Harry C. Kellerman

1966 Joseph Rishar

1967 James N. McKeown

1967 Robert R. Ostrander

1969 George Herrschaft

1970 Sharon L. Finkbeiner Carr

1970 Ruth L. Parmer Emmons

1972 Michael J. Perry

1973 Joseph F. Coakley

1973 Joann Mastandrea

1973 Thomas Shields

1975 Therese E. Baker Bassler

1975 Kimberley Rogers Wistner

1975 Patricia A. Condran Dunleavy

1977 Frank A. De Leone

1977 Michael A. Petrick

1977 David J. Dingley

1979 Joseph (Joe) Mackereth

1979 Patricia Potero

1985 Angela Cunane Leonardo

1986 Dawn A. Thiele

1989 Ann Funk

1990 Kimberly D. Bolmarcich Hagney

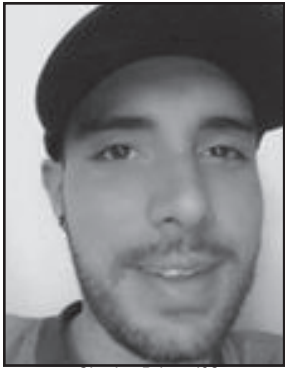
1991 Robert J. Celauro

1995 Steven M. Osterhout

1995 Kristen S. Arbeiter Swaim

2002 Christopher Leonard

~ In Memory ~



Charles Briggs '02



Charles Frank '66



Cheryl Wallace Doan



Christopher J.
Salmon '88



Christopher W.
Falkenstein '85



Frances Patricia Mudie '58



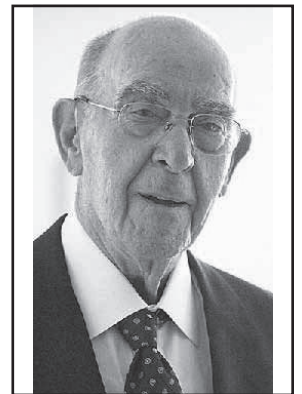
Frances Piotrowski
Murawski '50



Francis Hellings '71



Gail Doyle David '79



George Parker Geiges '45



Angela Cunane Leonardo '85



Anthony Pasqualone



Anthony Schaaf '68



Barbara Jean Kerber
Leighton '64



Benjamin S. Toland '88



Brett Spigelman '89



Brian Flangin '86



Bryan Husted '02



Carol Ann Redfield '73

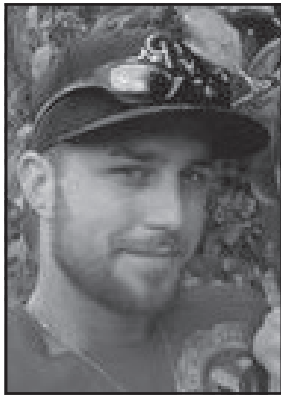


Carole R. Cerniak '49

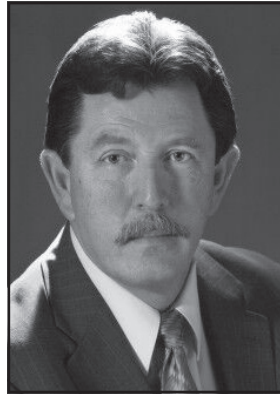
~ In Memory ~



Daniel E. Hughes '45



Dennis Dittmar '03



Ronald L. Martin '66



Timothy E. Hanson '92



Joseph C. Rossi '61



Cynthia Martin-Matthews '73



*Doris M. Warner
Minner '62*



*Rita Therese Schmitt
Teacher*



Stephen W. Watson '82



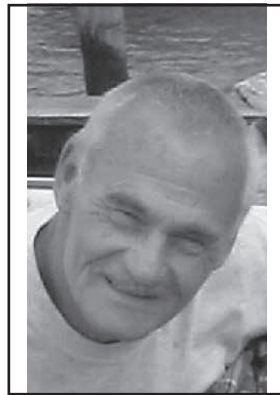
Kimberly Hagney '92



Dan Reimold '99



Edward Slater '65



Robert D. Beerhalter '68



Stephen F. Wurst '63



*Nancy Jane
Downing Ennis '66*



Daniel P. McCormick '06



Florence Scioli O'Hara '44



Robert J. Celauro '91



Sarajane Kroehling '63



Richard Scott Colomy '11

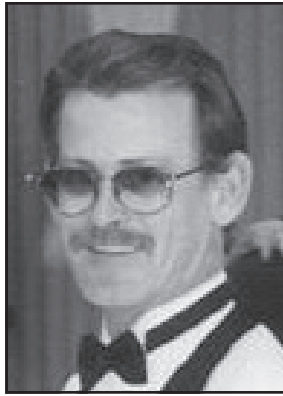
~ In Memory ~



Colleen Gawroski Whitney



David M. McDermott '84



David M. O'Donnell '77



*Nellie
Vandegrift-Rigby '38*



Debra Cox Swank



William Peter Brucks '49



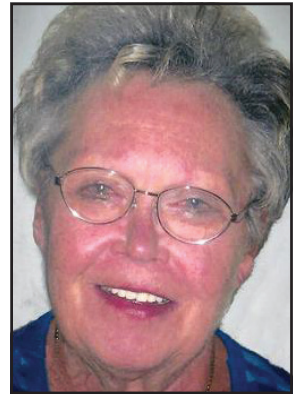
Dolores Lignore McMahon '46



Donald Earl Leight '79



Donna Perry Santiago '96



Doris Ely Anderson '42



William Stubbs '63



*Dorothy E. Hughes
Schrieber '40*



Dwight T. Serfass '62



Edith Stuhlrager Kellogg '41



Edna Garwood Klein '55



Zeinez Jimenez-Ramey '13



Edward T. Lowe '81



Elaine Bishop Yeagle '48



*Elizabeth J. Conklin
Feehan '42*



Emily Menzen Howe '34

~ In Memory ~



Gladys Ida Hoffner '56



Gladys M. Adams '37



Gloria Schukraft Mitchell '63



Harriet Bristow Lea '49



Harry E. Loessy '55



Harry Kellerman ~ Teacher



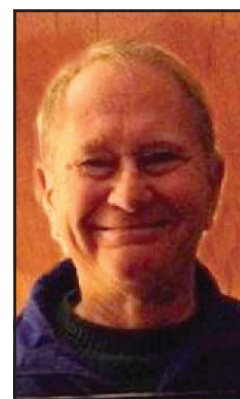
Harvey G. Rigby '39



Holly A. Golembiewski Teacher



James Lamb '61



James Snow '59



Janice Ray Vengels '70



Jason Greer



Jean E. Haenle Reif '54



Jeff Ludlow '74



John Frank Dougherty Sr. '67



Virginia Ruth
Ritter LeSaint '59



Wayne A. Warner '61



William Daley '55



William E. Cancel '67



William P. Vandergrift '48

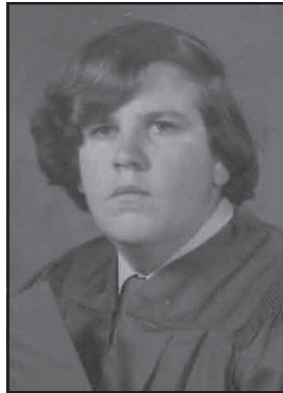
~ In Memory ~



John L. Clifford Jr. '65



John Lafferty '83



John Ramey '77



John Zeigelhofer '81



Richard Gregory '74



Joseph G. McPeak '81



*Joseph V.
DiGirolamo '99*



June M. Gartner '59



Karen L. McKissick '92



Patricia Hess '53



Lawrence F. Knight '43



Lois Lange Flick



Margaret Little



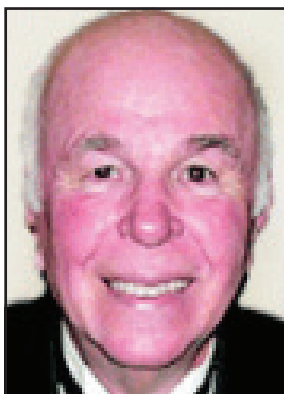
Michael L. Hughes '68



Owen McGarity '42



Michael Rutecki '57



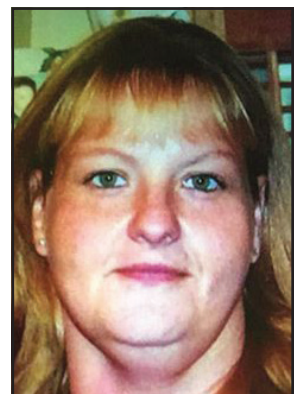
Robert Kee '55



Edward Turner '46



Janice Brady (O'Brien) '70



Mary Anne Stretz '87



Bensalem Alumni Association Membership Form

*Please
Print
Clearly.*

Name: _____ Maiden Name: _____

Address: _____

City: _____ State: _____ Zip: _____

E-Mail Address: _____

Phone: _____ Cell: _____ Class of: _____

Membership Dues for the Year 2016

\$ _____ **\$12.00 dues for 2016**

Donations for the Year 2016

\$ _____ \$25-\$49 + dues. . . . *Grey Owl Club*

\$ _____ \$50-\$99 + dues. . . . *Blue Owl Club*

\$ _____ \$100-\$499 + dues. . . *Gold Owl Club*

\$ _____ \$500+ + dues. . . . *Lifetime Member*

Total Enclosed: \$ _____

- ☐ Place me on the mailing list for the Golf Tournament.
- ☐ Contact me about sponsoring or contributing to a Scholarship.
- ☐ Contact me about information for advertising in *The Owlmanac*.
- ☐ Contact me about becoming involved in the Alumni Association.

*Please make check payable to Bensalem Alumni Association
and mail to:*

Bensalem Alumni Association
P.O. Box 26
Bensalem, PA 19020

*Be sure to include your E-mail address above so that we may
update our records accordingly.*

For your added convenience, you may now pay online using your **PayPal** account!
Just go to: **www.BensalemOwls.org** and click on the **DONATE** button. (If you have
already contributed, please disregard this form... and **Thank You!**)

Comments: _____



Established in 1986, the Bensalem Alumni Assoc. awards scholarships annually to deserving BHS seniors. The BAA is a non-profit organization which relies on fundraising activities, member dues, donations, and the unselfish help of volunteers to honor our school and the students who make BHS great!

POWER UP!

See pg. 7

Stream Energy's Power Up! Program helps raise funds by paying us monthly commissions when our supporters enroll for their electricity or natural gas service through the BAA. Sign up **TODAY** @ <http://bensalemalumni.streampowerup.biz/>

ANNUAL SCHOLARSHIP GOLF OUTING
June 15, 2016
Bensalem Twp. CC

Sign Up to Play
@ www.BensalemOwls.org
We Need Sponsors!
Call **215-245-2106**
or e-mail: President@BensalemAlumni.org

Visit us on-line to learn more about what we do...*and how you can help!*

*"Once an Owl,
always an Owl!"*

BENSALEM ALUMNI ASSOC., INC.
A non-profit 501(c)(3) corp. since 1986
www.BensalemOwls.org
PO Box 26, Bensalem, PA 19020