

WELCOME TO NORTHFIELD

Northfield has something unique to offer to your education and to your personal growth. We are glad you have chosen this school and that you were selected from among many applicants.

The faculty and staff join me in welcoming you to this campus with the hope that soon you, too, will find joy and fulfillment in your life at Northfield.

BARBARA M. CLOUGH, *Headmistress*

Hi there, and welcome to Northfield whether you are coming for the first or the fourth year.

This is our Handbook which contains an explanation of the traditions, customs, and rules of the school. Northfield has long been known for its co-operation in group living, and, with all of us working together, the year 1956-57 will be one of happiness and accomplishment.

CYN STEVENS, *Chairman*
Campus Government Association

HANDBOOK

Published by
The Campus Government Association
of
Northfield School for Girls
East Northfield, Mass.

Handbook Committee

Gail Whitehead '56, *Chairman*

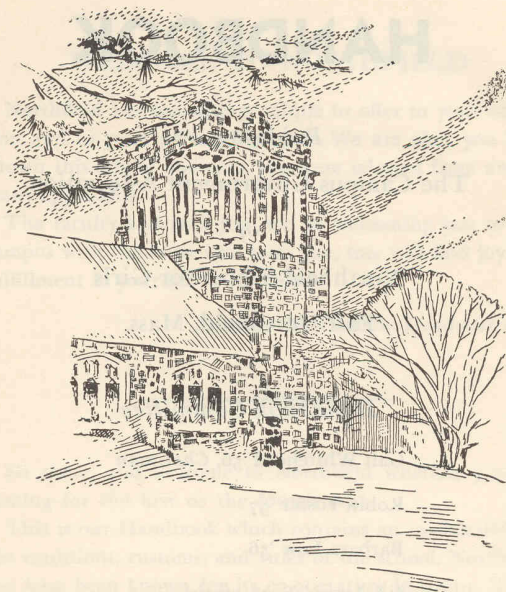
Robin Foster '57

Barbara Low '56

Jill Ayers '56, *ex-officio*

Mrs. Herman A. Otto, *Adviser*

1956-57



SCHOOL MOTTO

"I the Lord do keep it; I will water it every moment; lest any hurt it, I will keep it night and day."—Isaiah 27:3.

BRIEF HISTORY OF NORTHFIELD

Northfield's founder was Dwight Lyman Moody, a native Northfield farm boy, who became one of the outstanding religious leaders of his time. His own lack of education created in him the urge to provide the best education obtainable for girls of limited means. Northfield opened November 3, 1879, with twenty-five students who lived in "Penny Alley" at the Homestead, Mr. Moody's home. Revell, the first recitation hall was not completed until December of that year. East Hall, a dormitory, and the first building on the campus, was completed in 1880. Stone Hall was dedicated in 1885 as a recitation building; the same year on February 5, Grandma Moody's eightieth birthday, Marquand Hall was dedicated. It was at this celebration that the Northfield Benediction was used for the first time. Hillside came into use as a dormitory in 1886. In 1887 Weston Hall, also a dormitory, was completed. The following year Talcott Library was opened. Revell Hall and Holton Hall were transformed into dormitories in 1889. Today these two buildings, operating as one dormitory, are for freshmen. Betsey Moody Cottage, or the infirmary, opened in 1890 and was named by Mr. Moody in honor of his mother. In 1894, the Auditorium was erected. This building seats about 2,500 and is used for religious conferences, Sacred Concert, Commencement, and other special events. Skinner Gymnasium was completed in 1895. Moore Cottage, the smallest dormitory and housing twenty-seven girls, was given in 1899. Then followed, in rapid succession: Home Science, 1907; Russel Sage Chapel, 1909; Margaret Olivia Music Hall, 1909; Gould Hall, the largest dormitory building housing about 160 girls, 1912; Kenarden Hall, which is the administration building, 1913; and Palmer Hall, used for recitation, 1927. The Headmistress's Home was added in 1930 and Merrill-Keep in 1937. This year Northfield is proud to have a new dormitory, Mira B. Wilson Hall, in memory of Miss Mira B. Wilson, Headmistress from 1929-1952. The birthplace of D. L. Moody, now a faculty club house, houses the D. L. Moody Museum.



CAMPUS GOVERNMENT ASSOCIATION

The Campus Government Association (C.G.A.) is composed of all the students and faculty living at Northfield. From this group about 50 girls are chosen to serve on Council, the legislative body of C.G.A. The majority of these representatives are student officers elected from each hall by everyone living there.

Every student in the school, as a member of C.G.A., should feel it not only a duty but a privilege to take an active part in this school government. You may voice your constructive criticisms and ideas through Council which meets every other Saturday morning at 10:30 A.M. in the Library. Every member of C.G.A. is welcome to attend these meetings. Another opportunity for you to offer your suggestions is in the weekly house meetings held in the dormitories. Here the student officers report on the Council meetings. Many problems which arise in Council are discussed among all students. In this way, you not only learn to know the rules but also to understand why each one is necessary for the smooth running of the school. Council does not have the authority to make rules. However, any suggested improvements for the good of all are considered and, if approved by Council, are recommended to the administration. Only with the full cooperation and enthusiasm of every student and faculty member can the Campus Government Association hope to succeed.

THE NORTHFIELD SCHOOL CHURCH

The Northfield School Church is interdenominational and plays an important part in campus life. It was founded in 1933 by faculty and students of the school. While maintaining full membership at your home church, you may become an associate member of the school church by letter of commendation. You may become a full member by confession of faith, reaffirmation of faith, or letter of transfer. Besides Sunday worship, daily chapel is held four times a week. Speakers for these services might include the Chaplain, Headmistress, faculty member, student group, or guest speaker. One day each week is always devoted to hymn practice.

The Church is governed by the Church Cabinet which consists of the Chaplain, three faculty members, a student chairman, and other students representing dormitory and church groups. Cabinet is responsible for the smooth running of the church and for keeping the campus informed of its different events and activities.

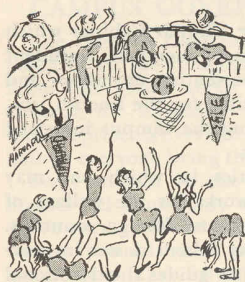
The Church has many activities in which one may participate. Community Service works for the welfare of people in neighboring communities and foreign countries. Rural work members teach Sunday School classes in nearby churches. The worship committee guides the devotional life of the school by planning chapel services, guiding the House Prayers program, and providing aids for Silent Time. The International Service Committee sponsors the United Student Appeal which raises money for benevolence giving, and International Weekend which brings foreign students from various schools and colleges to our campus, to share with us their ideas and experiences.

The expenses of the Church are covered by the money collected on Sunday and divided into Current Expenses and Benevolences. Each year, Cabinet pays the tuition for a foreign girl of high school age to attend Northfield. The money is also used in many sections of the world for the furthering of Christian work.

THE NORTHFIELD ATHLETIC ASSOCIATION

A hearty "hello" is extended to all students from the N.A.A. of which everyone is a member. One of the best ways to enjoy your years at Northfield is to participate in the sports of your choice. Here is a wonderful opportunity to get acquainted with your classmates.

N.A.A. sponsors an extensive intramural program with a place for every interested student. In the fall months, how about driving a hockey ball into the goal cage, smashing



a tennis ball over the net, or listening to the whistle of the badminton bird? Come winter, you can loop that ball through the basket, be a member of that "fun" volleyball team, or you can always stay outside with the skis and benefit from our abundance of New England snow. There is a place for the enthusiastic mermaid in rhythmic swimming or the racer on the swimming team,

and modern dancers can learn to point the toes. The arrival of spring marks the time for all to be outside and enjoy the beauty of the campus. What about hearing the twang of the arrow or slugging that softball into center field? No caddies, but golf is certainly a possibility.

Our interscholastic program provides additional competition for you "athletes" in the Sports days, arranged with neighboring private schools. Everyone comes to cheer the hockey, basketball, swimming, or softball team to victory.

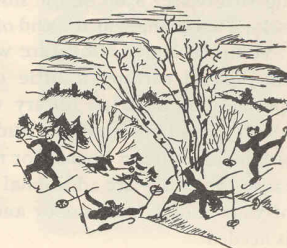
Athletic awards consisting of the Northfield "N," class numerals, and letters are goals for which to work. We invite you, one and all, to be active members of the N.A.A.

OUTING

Outdoor activities are planned for all seasons by Northfield's Outing Committee. This committee is composed of one student "rep" from each dorm; these girls lead different trips and are always happy to receive new activity suggestions. During the fall, Friday night supper hikes offer a refreshing start to the weekend. Bike trips and day hikes are for Sunday afternoons, while the all-day ascent of Mt. Monadnock is a Saturday escapade. Mountain Day, a surprise holiday declared by Miss Clough on the clearest day in autumn, is a high point of the first semester with games and plenty of exercise for faculty and students alike.

As the blustery winds of winter close in, ski trips for the hardy and gym open houses for the "home'n hearth loving" are scheduled. In case you are wondering what a gym open house is—it is an evening when you may swim, play basketball, badminton, or just ping-pong; the gym facilities are at your disposal. After the trials of midyear exams comes another surprise—Winter Carnival with, not only snow sculpturing by each dorm, but also individual and group competition in skiing, skating, and snowshoeing. Hot refreshments are served in the afternoon which is climaxed by the crowning of the King and Queen.

Finally, as spring fever hits the campus, before breakfast fishing, cookouts, and weekend trips to Northfield's cabin in the woods entice many a soul out of hibernation. The Cabin is on the ridge about two miles from the campus; bunks, sleeping bags, good food, and a big fireplace provide a wonderful experience in rustic living. This is a bit of Northfield that no one should miss. From now on, when classes get too strenuous, come join us outdoors; we'll be glad to see you.



DOMESTIC WORK

"Hurry up; it's time to go on dummy!" These are familiar words at Northfield. "Dummy" is our name for cooperative housekeeping. It not only reduces the tuition but helps each girl either to learn a new skill or to become more efficient at something she has previously learned. At the beginning of the year, everyone is assigned to a particular dummy by the House Instructor, who is in charge of the domestic work in each dormitory. This dummy is done each day and is planned so that it requires about an hour. It might include cooking, cleaning, washing dishes, setting tables, preparing vegetables, etc. Most work is done in the halls, but some of the larger dormitories send girls to do regular work in the library, the laboratory, or in some of the classrooms. At the end of the semester, dummy is changed. This means that in the course of a year you have the opportunity of doing two different jobs. Everyone also has what we call an "extra dummy." This takes half an hour and usually comes on the weekend. It includes such jobs as filling salt and pepper shakers, polishing silverware, washing the stove, and other miscellaneous tasks. This changes at the end of the semester too.

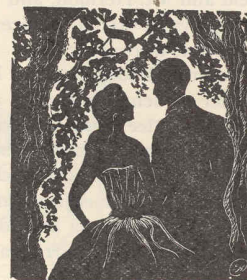
Volunteering to substitute when a girl is ill or away is one way of earning a little cash. There are also a few special jobs, such as library work and milk station, for which the school employs students. If you are interested, watch the bulletin boards for notices of available jobs. Because these jobs are additional appointments, the approval of your academic counselor and advisor in your dormitory is needed.



SOCIAL ACTIVITIES

For social butterflies, Mt. Hermon, our brother school, helps to make our Saturdays days of fun and excitement. Maybe, as you walk into the dorm after an especially rugged morning of classes, someone will greet you with, "You got a letter from Hermon!" Perhaps this is an invitation to attend an athletic "priv" (football, track, lacrosse or hockey) some sunny afternoon on the boys' "side of the river." If the weather does you a bad turn, you may do the inviting and entertain him on a "parlor date." This consists of dancing in the dorm, an informal get-together with other couples, or a walk around campus. Maybe, this letter is an invitation to attend an evening activity such as dinner and dancing, an all school square dance, the inevitable movie date, or one of the numerous class parties. These parties are particularly fun with gay decorations and the latest Northfield-Mt. Hermon originals for entertainment. Some of the recent themes have been "Twenty Thousand Leagues Under the Sea," "Down Yonder," "Basin Street," and "Hernando's Hide-a-Way." Other than the class parties and parlor dates, you might return his invitation by requesting his presence at one of three concerts held in the auditorium during the year, your dormitory party, or again the inevitable movie date. If you are extremely fortunate, your mailbox may hold an invitation to the Gateway or the Chateau, the two big dances of the year.

So, whatever your idea of a "great time" may be, you are bound to find something which will interest you.



MUSIC

Northfield offers varied musical opportunities to its students. If you enjoy choral singing, you may become a member of Sunday Choir; Freshman-Sophomore, Junior, or Senior. No tryouts are necessary, just a real interest and regular attendance. Each choir rotates, singing every third Sunday. On to higher achievements, harder work, and a large part in the Christmas Vespers and Sacred Concert program go about 100 upperclassmen in Chancel Choir. From these about 45 are chosen for Estey Choir. The music is more intricate, and voice and reading tests are necessary to be considered. For those interested in vocal or instrumental improvement, private instruction is offered. A recital is given about four times during the year by these students of music for the enjoyment of anyone interested.

If you are a musician, bring your instrument and join the Orchestra, which is composed of students from Northfield and Mt. Hermon, and meets once a week. The Orchestra plays at Sacred Concert and usually gives a concert sometime during the year.

Inter-Hall song contests, in which all students participate under student leadership, are held occasionally. An operetta and Glee Club concert are held on alternate years at commencement. Sometimes student groups gather informally to sing musicals such as "The Student Prince" and "Oklahoma" for enjoyment and entertainment at either a class party or on a Saturday evening. We hope you will become an active participant in our music program while you are at Northfield.

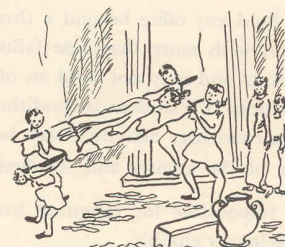


10

DRAMATICS

Tau Pi, Tri U, Sigma Delta—certainly not sororities? No, they are not sororities, but Northfield's class dramatic groups. If you have an urge to try on the mask of comedy or the mask of tragedy, you certainly will want to try out for one of these dramatic groups in the fall: Tau Pi for seniors, Tri U for juniors—and Sigma Delta for sophomores and for freshmen. Maybe, you say, I've no talent for acting, but I would love to be a part of a production group. Fine! There is plenty of room for many ranges of talent in costuming, lighting, scenery, make-up, etc. There is a place for you right down to the sloshing of paint back and forth over the wall board. These groups each put on one play at some time during the year, and some of the recent productions have been, "Twelfth Night," "Alcestis," "Best Foot Forward," "The Knave of Hearts," "Stage door," and "Jenny Kissed Me." Do the girls play all the male roles too, you ask? No, not in the junior and senior plays anyway, and here is one of the added features of participating in a play—the Hermon Players.

We hope you will want to add your talents to our dramatics while you are here at Northfield. You will enjoy it for, "the play's the thing."



11

POINT SYSTEM

1. The purpose of the point system is to provide for such a distribution of the work of student activities that:

- (a) The maximum number of students may participate in them.
- (b) No student shall be overburdened.

2. The approval of the Academic Counselors together with the adviser is necessary for participation in dramatic productions and musical groups other than choir and for holding extra-curricular offices.

3. Each office carries a certain number of points. Eligibility for office is determined by the student's academic record and physical condition.

4. Usually no student may carry more than ten points at one time or hold more than one position which carries over three points. Exceptions for unusual cases may be made by the adviser and Academic Counselor. To be eligible for ten points, or for a four, five or six point position, a student must have an average of B and no failures. A student with one failure may carry five points, but may not hold any office beyond a three-point position. A student with more than one failure may carry only three points and may not hold an office beyond a two-point position. If a student is conditioned in a subject, her extra-curricular activities may be curtailed at the discretion of the adviser and Academic Counselor.

5. A student is responsible for resigning from a position when she is no longer eligible.

6. During the period of dramatics or operetta rehearsals, a girl with a part in the production which requires attendance at rehearsals more often than twice a week, drops all other extra-curricular activities including choir. She need not drop any office(s) which she holds unless her extra-curricular points total more than ten.

7. Student and faculty leaders of extra-curricular organizations are responsible for seeing that all nominations are approved by the academic counselor who will consult the adviser. Results of elections and appointments should be sent within twenty-four hours to the academic counselor and the director of extra-curricular activities. Leaders of church, music, and dramatic groups for which students sign up tentatively, should send final lists of participants to each hall as well as to the academic counselor and director of extra-curricular activities.

8. A student is responsible for informing her adviser of any change in her extra-curricular program.

Point System

Points for any positions except C.G.A. offices are cumulative: i.e. the points for Estey include the points for choir and Chancel. Points may vary from block to block: e.g. orchestra 2,2, 3,3 means 2 points in blocks 1 and 2, and 3 points in blocks 3 and 4.

I. ATHLETIC OFFICES

Extra-curricular sports 2
Fire Chief 2
Captain 1
N.A.A.: Ch. 5
Sec. 2 (3 if hall rep)
Reps 2
Outing: Ch. 5
Sec. 2 (4 if hall rep)
Reps 3
Ski patrol: Head 0,2,2,0
Member 0,1,1,0

II. C.G.A. OFFICES (non-cumulative)

Chairman 6
Vice-chairman 3
Sec.-Treas. 3
Revell-Holton S.O. 4
Student Officer 3
Big Sister Comm.: Ch. 2,0,0,0
Member 1,0,0,0
Handbook Comm.: Ch. 0,0,4,4
Member 0,0,2,2
Class reps to council 1
Council reps to comms. 1

III. CHURCH OFFICES

Chairman 6
Clerk 4
Hall reps 3
Chimes: Ch. 2
Ringers 1
Choir ch. 1
Collection ch. 2
Assistant collection ch. 1
Collector: Head 4, Asst. 4
Community Service Ch. 3
Forums ch. 2, asst. ch. 1
International Service Comm.:
Ch. 3,3,3,2
Hall reps 1,2,2,1
Publicity ch. 3
Rural Work: Ch. 4
Teacher 3 or 2
Cabinet rep 4
Treas. 2, Asst. Treas. 2
Ushers: Ch. 2, Asst. 1
Worship Comm.: Ch. 4 (2 if
not house prayers ch.)
House prayers Ch. 3 (2 if two
in dorm)
Reps at large 2
Member of interest group or
comm. 1

IV. CLASS OFFICES

Pres.: Sr. 6, Jr. 5, Soph. 3,
Fr. 2
Vice-pres.: Sr. 2 (5 if on year-
book board), Jr. 2, Soph. 1,
Fr. 1
Corres. sec. 1 and Recording
sec. 1
Hall reps: Sr. 2, other 1 (2 if
on social comm.)
N.A.A. reps 2
Reps to Council 1
Sec. joint soc. Comm. 1
Senior room ch. 1
Social ch.: Sr. 4, Jr. 2, Soph. 2,
Fr. 3
Song Leader: Sr. 2, Jr. 1,1,1,2,
Soph. 1
Treas. 1
Yearbook board: Ed. 5,5,5,2 if
she has never served on
the Yearbook Board before
4,5,5,2 if she has been a
junior member
Bus. Mgr. 3
Act. Ed. 3,3,4,0
Art Ed. 3,3,3,0
Photo. Ed. 4,3,3,0
Members at large 3,4,3,0
Seco. 3,3,3,0
Senior Ed. 3,4,3,0
Junior member 3,3,3,0

V. HALL OFFICES

Entertainment Comm.: 1
Health council rep 1
Library council rep 2
Sec. and/or treas. 1
Social ch. 2
Song leader and/or music ch. 1
(2 in block of song contest)

VI. INTEREST GROUPS AND CLUBS

Dramatics: Pres. Tau Pi 2
Leads or major work 6
Bit parts 4
Library Council: ch. 4
Eng. class reps 1
Lit: Ed. 3
Bus. mgr. and art ed. 2
Jr. adviser to suppl. 2
Hall reps 2,0,2,2
Readers 1
Pres., ch., members of other
clubs and interest groups 1

VII. MUSIC

Leads and major parts in op-
erettas 0,0,4,6
Chancel 2,2,2,3
Choir: member 1, sec. 2
Estey: 4,5,4,5
Glee club 0,0,2,2 (3 if in
chancel)
Music lessons: voice 1, instru-
mental 3
Orchestra: 2,2,3,3

THE LIBRARY



Talcott Library is the center of many school activities, both academic and recreational. Free Reading Weeks, sponsored by the Library and the English department held in the fall and in late winter, help new girls to take advantage of 23,000 volumes and 50 magazine subscrip-

tions. There are also several special rooms in the Library to fill every girl's need: in the music room the two phonographs, equipped with headphones for undisturbed listening, are always in use, as music lovers enjoy a few of the over 700 long-playing and 78 rpm records; the audio-visual room is always in demand for the showing of films; and the art room gives us all a chance to further our knowledge and appreciation of beauty, with its displays of famous paintings, student art, and art objects such as sculptures and costumes from foreign countries.

Library Council, a special group of elected representatives from each hall and English class, and two members of the Library staff as advisers, work two ways: it brings student ideas and opinions to the Library and informs the student body of Library activities. It holds weekly meetings to plan regular activities, such as making posters, mending books, creating book and art exhibits, collecting and distributing Library notices daily, and purchasing books. It also sponsors two outstanding events of the year.

One of these events is the Book Week Tea which is held in the fall. This is an informal affair with contests and refreshments and gives everyone a chance to look at the new books which the Library has purchased. The other event is the Book Auction which is held in the winter. Books which have been sent to Northfield through special appeal are auctioned off to students and faculty.

TYPICAL DAY'S SCHEDULE

(Subject to change)

Rising—6:40

Silent time—7:05-7:20

Breakfast—7:20

Study Hall—8:00-8:40

First two periods—8:50, 9:40

Chapel—10:30 followed by milk station

Third and fourth periods—11:00, 11:50

Lunch—12:50

Study Hall—1:20-2:20

Afternoon classes—2:25, 3:15

Extra curricular or free time—4:00-6:00

Dinner—6:15 followed by House Prayers Monday and Thursday and House Meeting Wednesday

Study Hall—7:15-9:15

Funny Time—9:15-9:40

Quiet Time in room—9:45-10:00

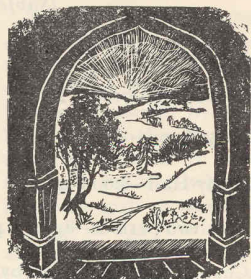
Lights out—10:00

There is no study hall Friday night and there are no classes Saturday; however, there is a regular study hall Sunday night.

DAYS TO REMEMBER

Seating Day In September, when we are first seated in Chapel according to our classification.

Mountain Day A surprise holiday, when the fall colors and frisky breezes are at their best,—the hikes into the hills,—a faculty-senior baseball game,—the hall stunts,—and what a picnic!



Glee Club Festival An annual concert when six boys' schools, including Mt. Hermon, visit our campus in the afternoon for dancing and give us a concert in the evening.

Lighting the Christmas Tree The first of pre-Christmas festivities, caroling 'neath a frosty sky around our campus Christmas tree.

Christmas Vespers Sweet-scented balsam boughs, lighted candles,—a service of carols and special instrumental music,—the whole school and the Hermon choir offering praises to God in song.

Winter Carnival Another surprise holiday, when the weather conditions are just right for winter sports and snow sculpture,—a prize to the dorm for the best snow sculpture and another for the most points made by a dorm in the competitive sports.

Founder's Day The fifth of February, Mr. D. L. Moody's birthday, which we celebrate on the first Sunday in the month. A first for seniors, when they wear their caps and gowns in the academic procession.

Valentine's Day and Heart Sisters Around Valentine's Day comes your chance to be especially nice to someone in your dorm. Just as you hide goodies and a bit of original

poetry or prose under her pillow or perhaps surprise her with a beautifully made bed, so someone may do the same for you. Valentine's Day you learn the name of your heart sister.

Class Day is a leisurely, classless day for Seniors. A "sleep-over" and late breakfast, hike for a picnic lunch, then class awards are given. At night a formal banquet ends this perfect day.

May Day and May Baskets It's an old tradition,—baskets popping with posies at each senior's door,—courtesy of her junior. Senior artistic talent shows itself in table decorations or in baskets hanging on doors of faculty and staff.

Tree Day Weekend A gala week end in the spring,—the planting of the junior class tree, spade orations, class songs, an original pageant of dance and song, the crowning of the May Queen.

Sacred Concert The climax of the weekend, when the entire student body of Mount Hermon and Northfield sing together in the auditorium in a program of sacred music. Over a thousand of us singing while two thousand parents, alumnae and friends listen.

Alumnae Weekend Usually the third weekend in May, when we welcome "home" the alumnae of former years and the seniors are officially welcomed into the Alumnae Association at a traditional coffee party.

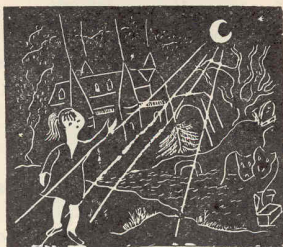
Chateau Dance A dance for the seniors of both schools given by the Trustees at the Chateau, all the girls looking beautiful in formal gowns.

Last Chapel Out of doors, weather permitting, while the proud parents, who have come for Commencement, share our joy in the awarding of academic and athletic prizes to the deserving winners.

Lantern Service On Chapel hill, after dark, the seniors in a simple ceremony pass the symbolic lights of Northfield to the juniors, to keep them shining as have others before them.

CAMPUS DICTIONARY

Academic Counselors plan schedules, help you with academic problems, and make suggestions about your future career. With the assistance of hall advisers, they work out an extra-curricular program appropriate to your academic achievement and your particular interests.



Betsey The school infirmary.

Big Sister The girl with the big smile who wrote to you before you came to school, and who takes you to the new girls' reception.

Bookstore Just what it's called, where you can buy everything from second-hand books to the latest editions, plus smocks, lamps, ink, sandwiches, sodas, and gifts.

Buddy An old girl in your dorm who takes you under her wing, when you are a new girl.

Cabin A rustic cabin belonging to the school, about 1½ miles from campus, where we go for fun and relaxation on day or overnight trips with faculty chaperones. It's a nice climb up to it, but well worth the effort.

Campus Guide Students who guide candidates for admission around the school and give them their first impression of Northfield and of a Northfield student.

Campus Mail Messages and notices for friends or dorm bulletin boards which save telephone calls and trips across the campus.

Chateau The imposing structure near the Hotel where the seniors have their last dance.

Citizenship guides A report of each girl's progress in citizenship as seen by the Student Officers and faculty members in each dormitory. These reports show how each girl is adjusting to school life with regard to her (a) obedience to law; (b) personal responsibility; and (c) social relations. The guides are discussed with each girl and sent home to parents periodically during the year.

Cop Don't worry it's not a policeman, just our affectionate name for our Student Officer.

Faculty Adviser The particular faculty member in your dorm to whom you go for help in planning your academic and extra-curricular program.

Faculty-Night-Supper Every Tuesday night, when the faculty eat by themselves, and we head the tables.

Floating Head When you hear that the "floating head" is sitting on the house, don't climb up the flag pole to see this phenomenon. The floating head is the assistant who substitutes for the Head of Hall.

Funny Time Twenty minutes at the end of study hour at night, when we all "blow off" steam. It's the time to get washed up and ready for the night.

Gateway The Mount Hermon year book.

Gateway Dance Held at Mount Hermon.

Head of Hall The faculty member in charge of your dorm, to whom you go for permissions. The friend, who is ready to help you in your time of need, be it finding a way to fix the zipper that's stuck or helping you understand some of your personal problems.

Highlights The Northfield year book.

House Instructor The faculty member in charge of domestic work in your hall. Her patience and perseverance in teaching us which end of the broom to use and how to boil water is what makes Northfield alumnae in such demand as housewives.

House Prayers Twice a week after dinner in each hall, when a student or faculty member shares thoughts, experiences, poetry, reading, or music of a religious nature with the rest of us in the dorm.

The Lit Northfield publication of the best of student prose, art and poetry. It comes out twice a year.

Lost and Found Lose something? Go to East Hall any school afternoon after classes.

Milk Station Where? In the basement of Stone Hall. When? After chapel. What? Crackers and milk.

Night Watchman If you hear the tramp, tramp of strange feet in the night, don't worry! It is just the night watchman who checks the dorms to see that all is okay.

Parlor Dates A date with a Hermonite at Northfield on Saturday afternoon.

Pasture Back of East Gould, beyond the white posts where we are permitted to sunbathe.

"Pers" may refer to "travel pers" which you must have before a weekend or vacation and "late pers" which you may have if you're cramped for studying time.

Philips A small auditorium in Music Hall where we sometimes have parties and music recitals.

Quiet Time The few minutes between funny time and lights out when our student officer says goodnight to us. Every one is in her own room.

Red Box Contains school rules and regulations. You are responsible for knowing its contents.

Reps The girl in your dorm who is the official representative of her class or of a special extra-curricular group.

Rounds This is what we call it when the student officers go around during quiet time and say goodnight to us.

Round Top One of our favorite places on campus for a quiet moment and enjoyment of the view of the winding

Connecticut river and of the mountains of Vermont and New Hampshire in the distance. Sometimes we have chapel service here. On this hill beneath the pines, Mr. and Mrs. D. L. Moody are buried.

Senior Door The front door of Chapel sacred to the seniors. Underclassmen use it only when accompanied by a senior.

Senior Room A special room, a gift of alumnae, for the use of the seniors in their free time, complete with kitchenette and fireplace.

Silent Time Fifteen minutes of complete privacy, when a student may be absolutely alone in her room on alternate days. Her roommate may go out for a walk or listen to music in the living room at this time. This is a good time to collect one's thoughts.

Silverthorne The assembly room, upstairs in Stone Hall, where a talk on current events is held on Monday mornings and where we have movies and dramatics.

Sitting on the House This is what a faculty member does when she is in charge. She is there to answer your questions and to help you in any way that she can.

Ski Patrol, Skating Patrol Each consists of about 10 girls who place themselves conveniently on Northfield slopes and Perry Pond for the purpose of instruction and safety.

Student Officers The students who have been elected to be your representatives on C. G. A. They assist in making your hall run smoothly.

Table Heads and Opposites The faculty member and student who preside at the table, serve the food and help us season the meal with all-inclusive conversation.

Tree Day A dance program in which a large number of the student body takes part, composed by students and given the Saturday of Sacred Concert weekend.

SCHOOL SONGS

O NORTHFIELD BEAUTIFUL

(Alma Mater)

1.

There is a noble river,
That swiftly flows along,
It sweeps by many a campus
Far famed in tale and song;
No dearer loved among them all
Than Northfield grand and strong,
For where the purple hills surround
As God doth guard His own,
There, Alma Mater, are thy courts,—
But in our hearts thy throne.

Chorus

O Northfield beautiful,
O Northfield dear and fair!
Loyal and dutiful,
Thy daughters everywhere
Rise up and call thee blessed
For thy fost'ring care.

2.

As sign of our allegiance
We wear thy color blue
And gleams the star, six-pointed,
O'er loyal hearts and true
Emblems of truth and symmetry,
Our high ideals renew, and as one
Shining star of old did lead at
Length to God,
Guide us forever by thy beams in paths
our founder trod.

24

3.

Though short the moments with thee,
Though years stretch on before,
The friends, the truths we gain here
Shall be ours more and more.
We wait with hearts courageous,
On the threshold of life's door,
Remembering thou has taught us
That the purpose of our strife
Is not to make a living,
But to nobly make a life.

Bertha Clark Damon, '01

THE LIGHTS OF NORTHFIELD

(Traditional Lantern Service Song)

1.

There is a campus beautiful,
Oh, Northfield, cherished ever!
Where twinkling lights gleam out
o' nights,
Across the dreaming river.

Chorus

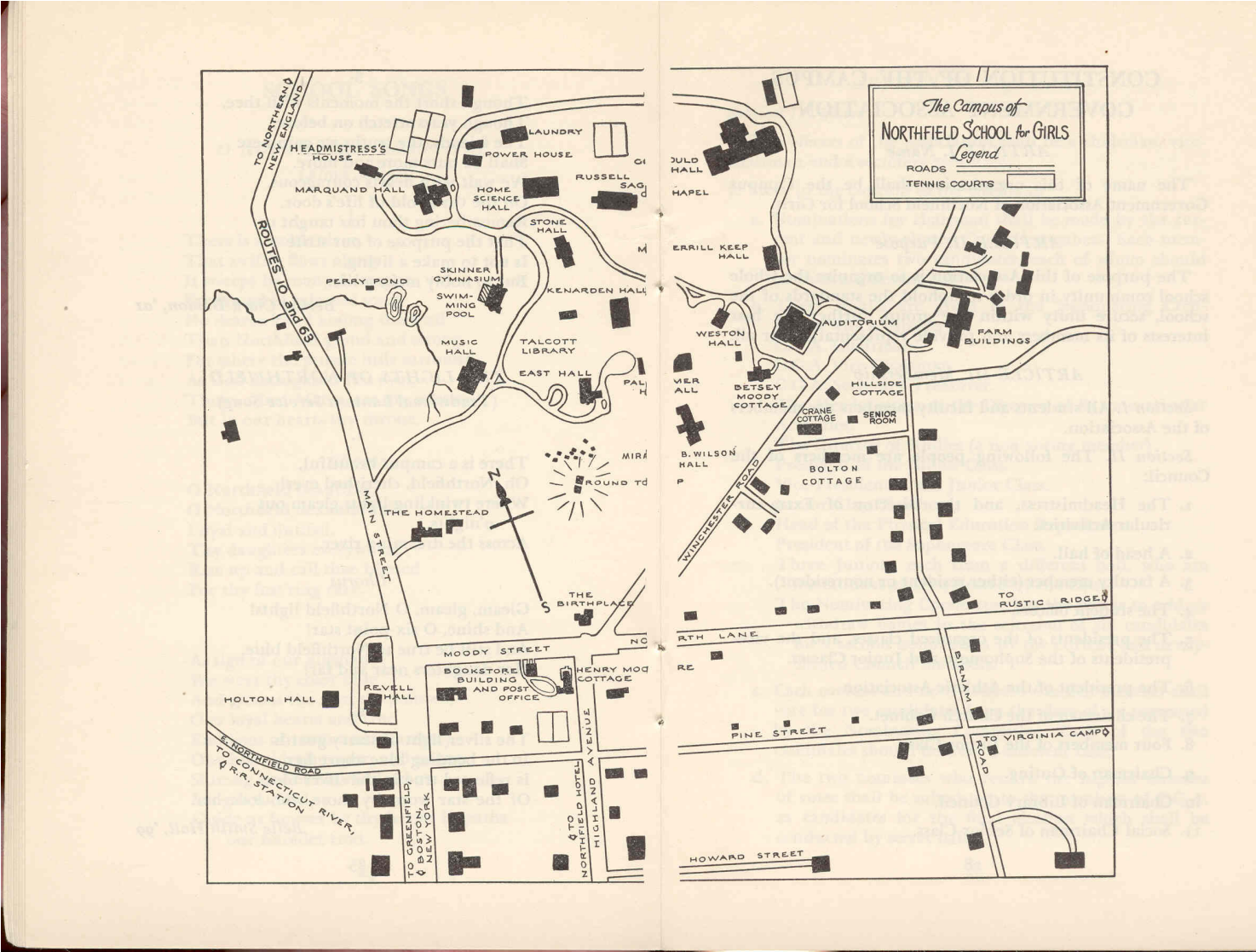
Gleam, gleam, O Northfield lights!
And shine, O six-point star!
And still be true to Northfield blue,
Her daughters near and far!

2.

The silver light of starry guards
In the bending blue above her,
Is reflected true in the silver blue
Of the star worn by those who love her.

Belle Smith Hall, '99

25



CONSTITUTION OF THE CAMPUS GOVERNMENT ASSOCIATION

ARTICLE I. Name

The name of this organization shall be the Campus Government Association of Northfield School for Girls.

ARTICLE II. Purpose

The purpose of this Association is to organize the whole school community in order to uphold the standards of the school, secure unity within the group, further the best interests of its members and provide representation for all.

ARTICLE III. Membership

Section I. All students and faculty members are members of the Association.

Section II. The following people are members of the Council:

1. The Headmistress, and the Director of Extra-curricular Activities.
2. A head of hall.
3. A faculty member (either resident or nonresident).
4. The student officers.
5. The presidents of the organized classes, and the vice-presidents of the Sophomore and Junior Classes.
6. The president of the Athletic Association.
7. The chairman of the Church Cabinet.
8. Four members of the Junior Class.
9. Chairman of Outing.
10. Chairman of Library Council.
11. Social Chairman of Senior Class.

ARTICLE IV. Organization

Section I. Officers

1. The officers of the Association shall be a chairman, vice-chairman and a secretary-treasurer.
2. Steps in the election of the chairman
 - a. Nominations for chairman shall be made by the current and newly-elected Council members. Each member nominates two candidates, each of whom should be from a different hall.
 - b. These results are given to the Nominating Committee which consists of:
 C.G.A. Chairman.
 C.G.A. Vice-Chairman.
 C.G.A. Secretary-Treasurer.
 The Headmistress or the Director of Extra-curricular Activities.
 The Director of Studies (a non-voting member).
 President of the Junior Class.
 Vice-President of the Junior Class.
 Junior Class Teacher.
 Head of the Physical Education Department.
 President of the Sophomore Class.
 Three Juniors, each from a different hall, who are not student officers, elected by the Class.
 The Nominating Committee has the power to add or withdraw names in the selection of six candidates for a second nomination by the current and newly-elected Council members.
 - c. Each current and newly-elected Council member shall vote for two candidates from the slate of six presented by the Nominating Committee. Each of the two candidates should be from a different hall.
 - d. The two nominees who receive the highest number of votes shall be submitted to the members of C.G.A. as candidates for the final election which shall be conducted by secret ballot.

3. Secretary-treasurer and vice-chairman will be elected at one of the last spring meetings.

Section II. Election

1. Student Officers: Prospective Seniors and Juniors are eligible for this position. The student officers shall be elected by student and faculty members in the respective halls. The town students elect a member from their group.
 - a. Each girl or faculty member, in nominating by secret ballot prior to the student officer elections, will nominate only as many girls as there are positions to be filled in her house.
 - b. The student officers and the Head of Hall will count the nominations and send into the office a complete list of all nominees arranged in order of number of votes received. The list of names to be voted upon, after approval for health, scholastic, citizenship reasons, must be not less than the number of student officer positions in the hall plus two, or not more than double the number of Student Officer positions.
 - c. In the event of a student officer's leaving the school, or resignation from her position:
 - (1) If school has been in session no more than one month, the candidate who received the next highest number of votes in the spring election will replace her.
 - (2) If after the first month of the school year but before the end of the first semester, a new election will be held. Only old students will be eligible as candidates for the position.
 - (3) If after the first semester, both new and old students will be eligible as candidates in the new election.
2. Other Members
 - a. Two prospective Juniors elected by the Class in the

spring; and two new Juniors elected by the Class in the fall at the time of the election of the Junior Vice-President.

- b. The Council will elect a head of hall and the faculty will choose a faculty member. Neither shall be eligible for re-election for a second consecutive year.
- c. Other members automatically become members by election to the offices which they hold.

Section III. Judicial Committee

The Judicial Committee is elected by the members of the Council at their first fall meeting. It consists of five members, each from a different hall including one member from Gould and another member from Marquand. Council members cast ballots for a Gould and Marquand girl and three girls from other dorms. The top candidates from Gould, Marquand and three different dormitories, will be considered as elected. In case of a tie vote, not more than twelve and not less than ten candidates receiving the greatest number of votes will be voted upon again. The identity of the members shall be known only to those serving on the Committee. The chairman of the Committee is one of this number appointed by the Headmistress. The chairman of the Association is ex-officio a member of the Committee.

Section IV. Council Treasury

Dues for a Council Treasury will be collected each year as directed by the Council.

ARTICLE V. Meetings

Section I. Meeting of the Council

Meetings of the Council are to be held at the call of the chairman, not less frequently than once a month.

Section II. Meeting of the Joint Committee

The Joint Committee is made up of the Heads of Hall

plus a student officer from each hall and the chairman, vice-chairman, and secretary-treasurer of Campus Government Association. Student officers in each hall elect one of their number to represent them on this committee. At any given meeting the number of faculty members and students voting must be equal.

Section III. Meeting of the Judicial Committee

Meetings of the Judicial Committee shall be called by the chairman of the Committee when the need arises.

ARTICLE VI. Duties and Responsibilities

Section I. Responsibilities of the Council

1. To provide a forum for the consideration of social customs and for the discussion of school matters which have been raised by individual members of the Association.
2. To represent and influence public opinion in the best interests of school life.
3. To further mutual respect and co-operation between faculty and students.
4. To sponsor such projects as
 - (a) publishing a handbook
 - (b) planning and carrying through the Big Sister program
 - (c) conducting annual Red Cross Drive
 - (d) participating in national and New England Student-Government Associations
 - (e) ushering at daily chapel and milk station
 - (f) providing representation on numerous faculty-student committees such as entertainment, Le College Cevenol, etc.
 - (g) planning for occasional open Council meetings
 - (h) electing committees to carry on such new projects as seem indicated from time to time

Section II. Responsibilities of Student Officers in the Dormitories

1. To work for mutual confidence and harmonious relationships in the hall
2. To support and further the observance of the agreed school customs
3. To plan with the heads of halls for Wednesday night house meetings and to share in the presiding at them
4. To consult with the heads of halls about minor infringements of regulations that do not go to the Judicial Committee (Report of any action taken must be reported, in writing, to the Headmistress.)
5. To make up the citizenship guides with the heads of halls

Section III. Relation of Council to Faculty

1. To the Headmistress
Decisions of Council are subject to the veto of the Headmistress.
2. To the Heads of Halls
Regarding social customs recommendations may be made by Council to the subsequent meetings of the heads of halls. If accepted by that group, the proposals go into effect as recommended. If questioned and returned to the Council, and rejection not accepted, a Joint Meeting must be called (See Article V, Section II)
3. Since the faculty has jurisdiction over all *academic* matters, requests and suggestions may be referred from Council to the Curriculum Committee of the faculty.

Section IV. Duties of Judicial Committee

1. Disciplinary cases not involving mental or physical health are to be decided by the committee; but the decision shall be subject to the Headmistress' approval.
2. Minor offenses when repeated shall be referred to this committee.

3. A record of cases must be kept and filed with the Headmistress.
4. Offenders may present their case to the committee if they so desire.

Section V. Decisions shall be reached by a majority vote of this group

ARTICLE VII. Amendments

Section I.

This Constitution may be amended at any meeting by a vote of two-thirds of the members of the Council provided a notice has been posted one week in advance. Amendments will go into force if approved by two-thirds of the members of the Head of Hall Group. If the amendment is not approved by the latter group, a Joint Meeting should be held. The amendment would then go into force only if approved by two-thirds of the Joint Committee. (See Article V, Section II).

CUSTOMS, RULES, AND REGULATIONS

Academic Work

CLASS ATTENDANCE Every student is expected to meet all her class appointments regularly and punctually. Excuses from class are given by your Head of Hall or by the nurse or doctor.

SCHEDULES Only the registrar (Miss Kingsbury) can change your schedule. You are expected to go to the classes indicated on your schedule card until she has changed it. Before going to her office in Kenarden, you should talk over the change with your adviser and obtain a permission slip from your academic counselor. Be sure to take your master schedule card with you to Miss Kingsbury's office.

EXCUSE FROM PREPARATION Given only in case of illness and when you have been excused from study hall by the doctor or by the faculty on the house. Only the Head of Hall signs a prep excuse.

STUDY HOUR Warning bell means go to your room. Last bell means quiet. Everyone is to be at her desk prepared for study—pens filled, pencils sharpened, all books, assignments, and equipment ready for use. Absolutely no visiting on the corridors or in student rooms during study hours and class periods. Girls coming off dummy during study hours must be quiet and not disturb others.

PROTECTED TIMES Study hour is maintained on the corridors and the house is kept quiet for those who want to study, but others are free to be downstairs or out of the dorm. Observed during mid-year and final exam periods, and occasionally if a dorm requests it on a weekend.

LATE PERMISSIONS A student may have one unquestioned late permission (one-half hour after lights out), per month. For additional late permissions her adviser should be consulted, if possible. Unless both roommates are having a late per, the girl taking one goes to the living room.

Occasionally a late per longer than one-half hour may be granted for specific need. Seniors who do not keep study hour do not have a late permission. Responsibility rests on the girl as to timing.

Domestic Work

Appropriate dress for domestic work is a clean smock, kerchief, socks, and shoes (not sneakers or play shoes). Smocks and kerchiefs worn on dummy must not be worn for any other purpose. Shorts, slacks, etc. are not worn under smocks. The plain, fast color, full length, long sleeved smocks required can be bought at the Bookstore: the kerchiefs are provided.

When on dummy, a girl must not be interrupted, except in an emergency and with the consent of the House Instructor.

If a girl has domestic work immediately following a meal, she must be in the dormitory but not necessarily in the dining room by meal time. If she makes a rearrangement it is counted as a weekend.

Girls are expected to volunteer to substitute if needed in case of an emergency or illness. When a girl is in the infirmary or has left campus for a family emergency, the school pays her substitute. Her roommate and student officer are responsible for getting the substitute.

Beginning the third weekend of the first semester and the second weekend of the second semester 15% of the number of girls doing domestic work in the house may have a rearrangement of domestic work according to the quota plan. See red box 27 for details of Quota Plan. No weekend rearrangements, as stated in this plan, are made during Commencement weekend. Seniors only may have a rearrangement for Saturday lunch or Saturday dinner if an underclass girl volunteers to do the work.

In addition to the Quota Plan a girl may rearrange her work for a class party, part in a play, and any other school

activities as announced by the Dietitian and Director of Extra-Curricular Activities. At vacation time every girl is responsible for domestic work on either the day of departure or the day of return.

Dormitory and Campus Regulations

FOOD IN ROOMS Food must be kept in a tin box. Food not in a tin box will be confiscated and not returned. Because of the danger of food poisoning, no canned, fresh, or frozen meat or fish is permitted. Carbonated beverages of all kinds and those with artificial flavor are also forbidden.

WASHING CLOTHES Each dorm has a laundry room. Clothes must never be washed in the bathroom.

RADIOS—PHONOGRAPHS The only students who may possess a radio, or phonograph, or a combination are the student officers. Borrowing is done only in free time and with the permission of the student officers. Each house decides whether two instruments may be played at the same time on the same corridor. On Sunday phonographs are played softly with music appropriate to the day.

TYPEWRITERS Because of the difference in the acoustics in different dorms, each dorm makes a plan as to where students and faculty may type during study hall and quiet time.

TELEPHONES The dorm telephone is used only for family calls. Such calls are made outside study hours and not later than ten p.m. Always ask the person in charge before placing a call. When permission is given to make a long distance call, remember to enter it in the record book. If the call is not "reverse charge," ask the operator when you place the call, to call back and tell you how much it is. Always add 10% to the charge the operator quotes and pay immediately. Please be sure your friends, especially boy friends, know they are not to call you.

We thank you for answering the phone if no faculty is there and leaving a note for her.

A pay phone is located beside Betsey Moody. It may be used in free time.

TELEGRAMS are taken only by faculty. If no faculty member is available, leave a note for the person in charge to call Western Union.

SEWING MACHINES Sewing machines in the houses may be used with permission.

CARE OF THE HOUSE We all need to keep the following in mind in connection with the care of our building:

1. Nothing to be pasted, tacked, or glued on the school furniture or walls.
2. Pictures and posters may be hung from ceiling molding with wire or "S" hooks.
3. Standard bulletin boards may be purchased at the Bookstore.
4. Ink bottles not to be taken into the living rooms.
5. No electrical appliances, except lamps, are to be brought to school by students.
6. No matches, no combustible cleaning or lighting fluids to be kept in student rooms.
7. No trunks taken to rooms.
8. Radiators should be turned off and doors closed when windows are open in cold weather.
9. Lights should be off when room is vacant.
10. School blankets, spreads, or pillows must never be taken out of doors.

CLOSING HOURS This means that girls out with parents, adult friends, or faculty must be in at this time.

Fridays	9:30 o'clock
Saturday	10:00 o'clock*

FIRE DRILLS The fire laws of Massachusetts require at least one fire drill a month. Various types of drills are

* A girl and her date who are out for dinner, unless attending a school activity, return by 9:00 o'clock.

given which cover every situation. All faculty, as well as students, must observe the following instructions:

When the fire bell rings:

1. Shut windows
2. Pull up shades
3. Shut transom
4. Turn on over-head light
5. Wear tie shoes and long coat
6. Carry towel
7. Walk out quietly, leaving door open so the Fire Lieutenant can inspect easily
8. Keep to wall side of stair wells
9. No conversation

SELLING FOR PROFIT A girl may sell articles for profit only with the permission of the Director of Extra-Curricular Activities.

CHURCH ATTENDANCE All students attend the Sunday morning service in Sage Chapel. They sit in the body of the Chapel. With parents, they may sit in the balcony. Roman Catholic students attend the Roman Catholic Church in Northfield or Hinsdale.

CHAPERONES A girl of college age is not considered a chaperone.

SUNBATHING Sunbathing is permitted only in the pasture near East Gould. It is confined to the area beyond the white post, on the hill and woods side of the fence. Word will come from the doctor's office when sunbathing may begin in the spring. When sitting near dormitories, girls must be properly clothed and should not assume sunbathing positions.

A halter and shorts or bathing suit are worn for sunbathing. When going to and from the pasture, an outer garment, such as a coat, a dress, or a skirt and blouse must be worn.

School blankets, spreads or pillows may not be taken from the dormitories.

SMOKING Cigarettes, matches, lighters and lighter fluid must not be in the possession of students while at school.

Smoking, while students are under the jurisdiction* of the school, is not permitted under any circumstances or places other than the following:

1. A girl may smoke in town only in the private room of *visiting* parents and in a home in town only when she is an overnight or weekend guest. (Never in a home in town if she is just calling or having a meal there.)
2. She may smoke outside the town of Northfield only when driving with her own or friends' parents.
3. When travelling on vacation or weekend trips, she may smoke on a train or bus beyond the Greenfield and Brattleboro stations. (Never in these stations or towns or between them and the school.)

Dress

DRESS FOR CHURCH Everyone is expected to wear a hat and stockings to Church on Sunday morning.

DRESS FOR THE DINING ROOM Everyone is expected to change for dinner at night. Girls must be neatly dressed for all meals. (Shirt-tails in, no sneakers, etc.) A girl may wear a kerchief to breakfast and through domestic work on Saturday and Sunday mornings, and to luncheon on Saturday. Bobby pins and curlers must be neatly covered. Stockings are worn to Sunday dinner.

DRESS DURING FREE TIME On Saturdays and after 4 p.m. on school days Bermuda shorts, pedal-pushers, slacks, and dungarees may be worn in free time. These are not to be worn in the living-room during study hour and never on domestic work. On Sunday they are suitable only for organized hikes and bicycle trips into the country. On Sunday they are not appropriate for walking on Highland

* Jurisdiction includes—seniors alone and all students accompanied by seniors or faculty, on day trips out of town.

Avenue and on Main Street, including the church square, or for calling in dormitories. Nor are they appropriate for regular appointments such as choir, office hours, and examinations. They are not worn for study in the library except in free time. Skirts are worn for lunch in town, for parlor dates, and into all stores in Northfield. Students using the Library on Friday evenings may wear curlers provided they are neatly covered. This is the only time and place they may wear curlers outside the dormitory.

DRESS FOR PHYSICAL EDUCATION ACTIVITIES Girls who live in an inner campus dormitory may wear regulation gym shorts and tennis shorts without a coat or skirt directly to and from an activity.

SKI PANT DAY On a cold day the Head of Hall may recommend that ski pants be worn.

SKI CLOTHES Ski clothes may be worn to classes in the morning or afternoon by girls who have their ski classes during that interval. Similarly, they may be worn by those who are going to do active sports after 4 p.m.

FOOT WEAR Short, white socks are worn in Physical Education classes. Wool socks or stockings are worn in cold weather. Socks, stockings, or peds should be worn with all shoes and sneakers. Sneakers may be worn except in the dining room for dinner, to Sunday chapel, and on domestic work.

Health

There is a Health Council which considers problems pertaining to the physical well being of the students.

If you are ill and feel you need a nurse's attention, don't ever hesitate to go to the infirmary. There is always a nurse on duty. However, if you must go outside clinic hours, please be sure to ask your Head Hall to call the infirmary before you go there.

If you are admitted to the infirmary as a patient or delayed in the clinic so that you will miss domestic work, it

is your responsibility to tell the nurse at once, so that she may send word to the dorm to have a substitute do your dummy.

When discharged from the infirmary, the Head of Hall must know as soon as you return to the dorm.

Medication is administered only by the medical staff or by faculty under the direction of the doctor.

The approval of the school physician is needed for all medicine, including aspirin, kept in a student's room. Never share medicine with another student.

Absence from Dormitory or Campus

Make it a habit, whenever you go out of the dormitory to sign out in the dorm "sign out" book, and to sign in again when you return.

Unless a faculty member is in the building a student may not enter.

BEFORE BREAKFAST A student may not leave the dormitory before rising. She may leave before breakfast only to take a walk. The usual rules for walks apply. Students out at this time are expected to be quiet.

AFTER DARK After dark, it is necessary to walk in two's on the inner campus and in groups of three to and from Revell Holton, Moore, Hillside, and faculty homes.

BICYCLES Regulations for bicycles are as follows:

1. Ride on the right side of the road and be careful to stay together.
2. In town, bicycles should not be ridden on sidewalks.
3. If you ride after sunset, be sure there is a light on the front of your bike and reflector on the back.
4. Only one person may ride per bicycle.
5. Before leaving check for loose handlebars, seat etc.
6. Be aware of the constant danger of blowouts and soft shoulders.

WHEN WALKING OR BIKING OFF CAMPUS:

1. Sign out giving destination and route number.
2. On Sunday students may go only as far as the church.
3. Be sure you are accompanied by at least the minimum number of girls and that you keep together.
4. Do not loiter.
5. If you plan to call on friends or stop at the Hotel en route, be sure your Head of Hall knows of the plan.
6. For routes other than these listed you will need to invite a faculty member to accompany you. A faculty member must be included in any group planning to hike on the highway north of campus (this includes Wanamaker Pond), to build a fire in Washington Park, and to go to Washington Park after dark.

SUGGESTED ROUTES

(Mileage is given in parenthesis and is round trip from the flagpole.)

You may bike and walk alone on routes 1 and 2.

Route 1. *North Lane Square* Left of Hillside Cottage down Birnam Road, right on North Lane, right Winchester Road or to Bookstore path and back to campus (1).

Route 2. *Church Square* Left by Moore Cottage on Highland Avenue to end of Avenue, (right) on to Main Street and back to campus (1.9).

You'll need at least *one other girl* if you plan to go on any of the three following routes:

Route 3. *Hotel Square* Left of Moore Cottage on Highland Avenue, left through Hotel driveway to Birnam Road, left on Birnam Road back to campus (2.2).

Route 4. *Glenwood Avenue Square* Left by Moore Cottage on Highland Avenue, left on Glenwood Avenue to Birnam Road, left on Birnam Road back to campus (2).

Route 5. *Pine Street Square* Left by Moore Cottage on Highland Avenue to Pine Street, left on Pine Street to Birnam Road, left on Birnam Road back to campus (1.6).

At least four girls must travel together on all the following routes. On Sunday, we may go only as far as the church on Main Street which excludes these routes.

Route 6. *School Street Square* Left on Main Street, left on School Street to Birnam Road, left on Birnam Road back to campus (2.8).

Route 7. *Warwick Avenue Square* Left on Main Street to Warwick Road, left on Warwick Road to Birnam Road, left on Birnam Road back to campus. (4.1).

Route 8. *Maple Avenue Square* Left on Main Street to Maple Avenue, left on Maple Avenue to East Street, left on East Street to Warwick Road, right on Warwick Road to Birnam Road, left on Birnam Road and back to campus or you may continue on East Street across Warwick Road to School Street, then right on School Street to Birnam Road, left on Birnam Road to campus. (5).

Route 9. *Two-Mile Square* Left by Auditorium on Winchester Road to Pierson Road, left on Pierson to highway, return by same route.

Route 10. *Four-Mile Square* Left by Auditorium, on Winchester Road to highway, return by same route.

AUTOMOBILES Be sure your Head of Hall knows of the ride whenever you step into a car. A student drives a car only when her parent or guardian is in the car, and never in the town of Northfield.

The automobile permission card, which is signed by your parents and filed in the Head of Hall's office, gives you permission to:

1. Ride with families of other students of the Northfield Schools.
2. Ride with your own brother or sister.
3. Ride with adult family friends and participate in school trips.

IN TOWN PERMISSIONS AND MEALS Special permission is not needed to go to the Valley Vista for a snack. Special permission is needed to go to the stores south of the East Northfield Church and to visit friends in town. For the Valley Vista, Northfield stores, and visits in town, skirts must be worn. Girls may not go into stores on Sunday.

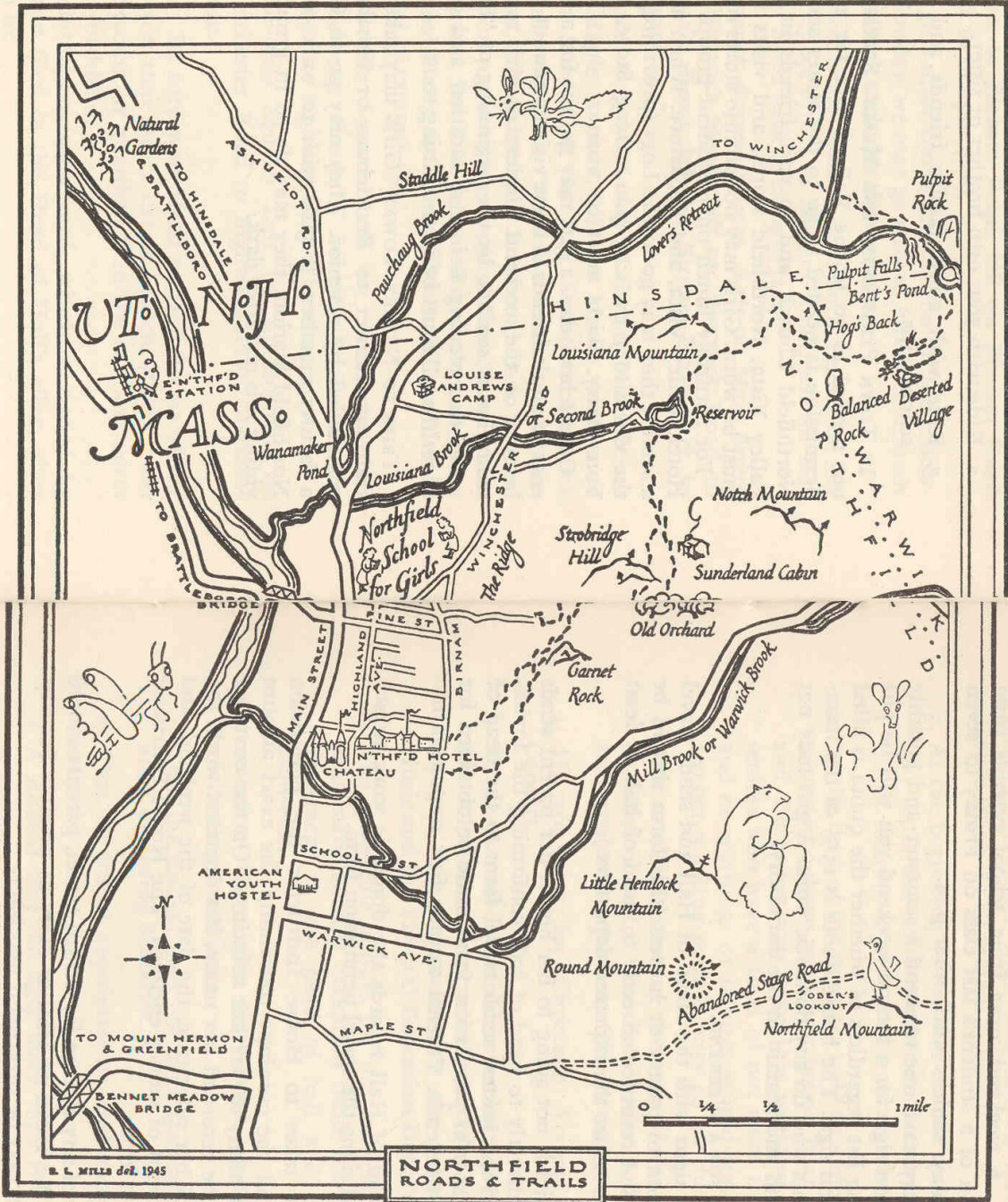
For Saturday lunch only, student groups may go to the Hotel, Valley Vista, and Bookstore. When accompanied by a senior, they may go to the Logs (providing they return to the dormitory by 1:45 p.m.) Drug Store, Lily Dan, and Yore Dairy. Skirts must be worn.

On a school day, a girl may go out for a meal with parents or adult friends if these visitors cannot be here to take her out on the weekend. Underclass girls must be back for study hour; seniors, by the beginning of "funny time."

On the evening before a vacation and on the evening of return, all must be in the dining room.

TRIPS TO NEARBY TOWNS Girls may take a day trip by train or transfer to Brattleboro or Northampton if accompanied by a senior. They may go to Greenfield with a faculty member. If girls wish to walk to or from East Northfield Station, they may do so in groups of four providing it is not after dark.

NORTHFIELD ROADS AND TRAILS



Weekends and Overnights

WEEKENDS A weekend away from school extends from the conclusion of a student's last class on Friday to seven p.m. on Sunday, seniors until nine p.m.

Students may have one weekend a semester and possibly two. When you sign for a second weekend you will be put on the waiting list regardless of whether the quota is filled at the time you sign. The house quota is 15% of the number of students who do any domestic work. A girl may not take a weekend and remain in the dormitory.

PROCEDURE FOR A WEEKEND:

1. Student signs with the Head of Hall and sends travel permission to parent or hostess (this form should be signed and returned directly to head of hall at least five days before the expected departure.)
2. If the girl is not going to her home, her parent sends a note directly to head of hall confirming the invitation and the hostess sends travel form to the head of hall. A special permission form must be obtained for college weekends. Parents assume full responsibility.
3. The Head of Hall records the domestic work substitute and signs the travel permission form.
4. Student takes to House Instructor the permission form and the envelope containing the exact amount (35¢ an hour) to pay her substitute. On the envelope should be recorded her name, her domestic work, the name of her substitute, the date of the weekend, and the amount of money enclosed. The House Instructor signs the form.
5. In case of any change for return travel, parents should notify the Head of Hall as early as possible Sunday. Charges may be reversed if necessary.

RESTRICTED WEEKENDS Because of special school activities or new domestic work assignments, there are a few weekends when we all remain at school.

1. At the beginning of the year no one may take a weekend until the third weekend. Occasionally for academic reasons, a girl's weekends may be restricted.
2. At the turn of the semester only freshmen and sophomores who have no grade below B at mid-semester and December may take this weekend. Juniors and seniors who have a total of not more than two C+'s and no warnings or failures at mid-semester and December marking periods, may go on this weekend.
3. The weekend following the turn of the semester may be taken only if it does not involve a domestic work rearrangement. (Student Officers may go.)
4. All are here for Christmas Vespers and Sacred Concert.
5. In general, all will need to be here the weekend before Christmas Vespers and Sacred Concert, but exceptions may be made with the permission of the Music and the Physical Education Departments.
6. The same rule applies for the weekend before final examinations. Any exception made must be by joint agreement of the head of hall and the academic counselor.

OVERNIGHTS Overnights away from school are subject to the following conditions:

1. That the student does not have domestic work before, after, or during breakfast.
2. That no school appointments, including church, are missed.
3. A student may not have more than two overnights a semester.

A campus student may accept an invitation to the home of a town student. The Head of Hall and parent confirm the plans. For a weekend at the home of a town student, the regular procedure is followed.

OVERNIGHTS ON CAMPUS A student who has before, during, or after breakfast domestic work may take an overnight in a Northfield dormitory if she is careful to return in time to meet her domestic work appointment. Students make arrangements with their Head of Hall for giving and accepting invitations for an overnight or weekend in another dormitory.

Hospitality

MEAL GUESTS Students may exchange invitations for Friday and Saturday night dinners, Sunday dinner, and occasionally Saturday lunch. They must sign with the Head of Hall by 8:45 of the day.

Day students may be invited to the dormitory for an occasional meal.

Parents or Guardians may be invited to a meal in the dormitory once during the year as guests of the school. Exception: Thanksgiving. The charge is \$2.00.

VISITORS Parents and family friends are welcome during the weekend after the third week of school.

1. They should not come more than once a month.
2. On arrival, they greet the person in charge.
3. Mothers may visit in daughter's room; fathers may do so only with the permission of the person in charge.
4. On Sunday they do not come before 10:30 a.m.

Visits on school days are exceptions made for those who cannot come on the weekend.

OVERNIGHT GUESTS Students make arrangements with their Head of Hall for giving and accepting invitations for an overnight or weekend in another dormitory.

Day students may be invited to the dormitories for an occasional overnight or weekend.

Only a sister who is an applicant may spend the night in a dormitory. She may be the guest of the school for three meals and the night.

Dates

MT. HERMON Mt. Hermon boys may call from 2:45-4:45 on Saturdays. A girl signs with her Head of Hall by 8:45 Saturday morning for this date. Dates must stay on the inner campus except for the Bookstore, Valley Vista and faculty homes. The gymnasium, if there is a scheduled game, and the library are the only buildings open to them.

PRIVILEGES AT MT. HERMON:

1. Girls—sign with the Head of Hall by 8:45 a.m. Saturday morning.
2. Before-dinner domestic work girls assume the responsibility of getting to the bus by 4:30.
3. If the "privilege" is canceled, the boy may come to Northfield for a date. Students make individual plans, each girl letting the Head of Hall know if she is expecting a boy.

BROTHERS Brothers, who are students at Mt. Hermon, may take their sisters to the Hotel and to the Valley Vista for dinner on Saturday night.

Other brothers may take their sisters out to places approved by the Head of Hall, and with their parent's permission, drive their sisters to and from this designated place.

It is understood that no other boys are involved in these plans unless arrangements are made according to the following section.

BOYS FROM OUT OF TOWN On Saturday only, a girl may receive boys whose names have been indicated in writing by her parents: blind dates not included. If the girl's parents have given special permission, they may have lunch or dinner at the Hotel or the Valley Vista. On arrival and when leaving, they must speak to the hostess, who

has been notified by the Head of Hall, and also the Head of Hall when they return to the dormitory. After leaving the Hotel or the Valley Vista, they should return directly to the dormitory arriving there by 9:00. They may visit in the living room until the beginning of "funny time." They may, after their return to the dormitory, go to the movies or other campus entertainment.

Senior Privileges

Senior privileges begin on Fall Seating Day for all who have been seated as seniors.

1. Seniors may use their own discretion in observing study hours:
 - a. They may not go into the rooms of other students, including seniors.
 - b. They may be in the living room, but must not disturb others.
 - c. After supper they may be outdoors on the inner campus until 8:00 (play tennis etc.)
 - d. They may use the laundry with the permission of the person in charge and may take a shower or bath during study hour according to the individual hour plan.
 - e. On the evening that a senior does not observe study hour, she may not have a late permission.
 - f. They may not use the senior room in the evening Monday-Thursday.
2. With the approval of the Head of Hall, seniors may go to Brattleboro or Northampton without a chaperone and may have the privileges and the responsibility of chaperoning other students.
3. Sleepovers: Seniors may have a sleepover once a week. They may not secure food from the kitchen or have

trays. On Saturday they have a sleepover only if they have no after-breakfast domestic work, regular, extra, or substitute.

4. The West steps of the Chapel shall be called the Senior Steps. Underclass students should not use these steps.
5. A senior may have a domestic rearrangement to accept an invitation to Miss Clough's for Sunday supper or breakfast.
6. For use of the senior room see special sheet.

When a senior has a warning from her academic counselor, she must observe all study hours, but she may have her other senior privileges.

A senior with a condition or failure is a senior without privileges. She may not have sleepovers, and she must observe all study hours.

WHO'S WHO

DR. HOWARD L. RUBENDALL	<i>President</i>
BARBARA M. CLOUGH	<i>Headmistress</i>
S. WYNNE KEEVER	<i>Director of Studies</i>
DOLORES KERRICK	<i>Director of Extra-Curricular Activities</i>
MARGARET MENSEL	<i>Admissions Director</i>
ROBERT SANDERCOCK	<i>Chaplain</i>
ANNIE MILDRED HERRING	<i>Dietitian</i>
MABEL DARRAH	<i>Executive Secretary, Alumnae Association</i>
MRS. PATRICIA CARROLL	<i>Head Librarian</i>
CHARLES SOLMS, M.D.	<i>Physician</i>
DR. VERNON P. WILLIAMS	<i>Consulting Psychiatrist</i>
LOUISE KINGSBURY	<i>Registrar</i>

ACADEMIC COUNSELORS

EDITH PASSMORE	<i>Class of 1957</i>
ELIZABETH DORCHESTER	<i>Class of 1958</i>
ANNE WALKER	<i>Classes of 1959 and 1960</i>

SPECIAL SERVICES

ELIZABETH W. KNOWLTON	<i>Assistant Dietitian</i>
HELEN HANDY	<i>Secretary to Superintendent of Buildings</i>
RICHARD HILLER	<i>Supervisor of Night Watchmen</i>
MRS. MARION MIDDLETON	<i>Secretary to Headmistress</i>
SOPHIA SERVAES	<i>Cashier</i>

HEADS OF DEPARTMENTS

ROBERT SANDERCOCK	<i>Bible</i>
OLIVE HORN	<i>Classical Language</i>
EVA FREEMAN	<i>English</i>
ELEANOR DAVIS	<i>History</i>
CLARICE CARPENTER	<i>Household Economics</i>
SARAH M. CURTIS	} <i>Mathematics, co-heads</i>
MARGARET L. CHAPIN	
RUTH E. ELLISON	<i>Modern Languages</i>
ALBERT RAYMOND	<i>Music and Director of Choral Music</i>
MARY LOU BIDDLESTONE	<i>Physical Education</i>
ELIZABETH HOMET	<i>Science</i>

HEADS OF HALLS

LOUISE ARNETT	<i>Adviser, Heads of Halls</i>
ONA BRIGGS (MRS. HOWARD)	<i>Merrill-Keep</i>
(September-December)	
JEAN CUMMINGS	<i>East Gould</i>
SARAH M. CURTIS	<i>West Gould</i>
LOUISE E. DORCHESTER (MRS. A. H.)	<i>Hillside</i>
GRACE B. ELLIOTT (MRS. RICHARD P.)	<i>Merrill-Keep</i>
(January-June)	
KATHARINE MACIVER (MRS. NORMAN)	<i>East Marquand</i>
RUTH MURRAY (MRS. JOSEPH J.)	<i>Center Gould</i>
BETTINA E. OTTO (MRS. H. A.)	<i>West Marquand</i>
HELEN PRESCOTT	<i>East Hall</i>
HAZEL PURRINGTON (MRS. LEROY)	<i>Revell-Holton</i>
ELSIE ROSS (MRS. FRANK)	<i>Mira B. Wilson Hall</i>
ALICE SEELEY (MRS. HERBERT)	<i>Moore Cottage</i>
ELIZABETH WESTON	<i>Weston</i>
A. JEANNE COLLARD (MRS.)	<i>Substitute Head of Hall</i>
DOROTHY KIRRMANN (MRS. ERNEST)	<i>Substitute Head of Hall</i>
MAY B. RANKIN (MRS. STANLEY)	<i>Substitute Head of Hall</i>
LEONA WOLF (MRS. GUSTAV)	<i>Substitute Head of Hall</i>

STUDENT LEADERS

1956-57

CYNTHIA STEVENS	Chairman, C.G.A.	Weston
SARA PEW	Vice-Chairman, C.G.A.	East Marquand
MARTHA JOHNSON	Sec'y-Treas., C.G.A.	Revell-Holton
KAREN PARSONS	Chairman, Church Cabinet	East
KATHERINE JOHNSTON	Clerk, Church Cabinet	East Marquand
SALLY BOGLE	Pres., Senior Class	Center Gould
VIRGINIA LYMAN	Pres., Junior Class	East
NANCY MOEBUS	Pres., Sophomore Class	Mira B. Wilson
MARIANNE SEVERANCE	Chairman, N.A.A.	West Marquand
BEVERLY DUMBRECK	Chairman, Outing	Town
SARAH DREW	All Campus Song Leader	Center Gould
SUE OSBORNE	Chairman, Library Council	East

56

MAIL HOURS

Postal Mail—distributed in dormitories before lunch

Campus Mail—sent and received via Kenarden twice a day

BANKING HOURS

Weekdays 2:00 P.M.- 5:00 P.M.

Saturdays 9:00 A.M.-12 Noon

You should open a banking account in Kenarden where you may draw or make deposits during the above times. It is advisable that you have no more than a dollar in your room.

INFIRMARY HOURS

Weekdays 8:00-11:50 A.M.

1:30- 2:00 P.M.

4:00- 5:50 P.M.

Saturdays 8:00-11:50 A.M.

1:30- 2:15 P.M.

4:00- 5:00 P.M.

Sundays 10:00-10:45 A.M.

4:00- 4:45 P.M.

Dr. Solms Office Hours

Weekdays 9:00-12:00 A.M.

Sunday 9:00- 9:30 A.M.

LIBRARY HOURS

Weekdays 8:00 A.M.-12:40 P.M.

1:40 P.M.- 5:40 P.M.

Saturdays 8:45 A.M.-12:30 P.M.

1:30 P.M.- 4:00 P.M.

Sundays 2:30 P.M.- 4:30 P.M.

Evenings 7:15 P.M.- 9:15 P.M.

Tuesday and Thursday evenings for Juniors and Seniors, for Sophomores also while doing research papers and Fridays for everyone

57

AUTOMOBILE DISTANCES FROM EAST NORTHFIELD

Springfield52 mi.	Portland185 mi.
Worcester62 "	New York196 "
Albany95 "	Montreal287 "
Boston101 "	Philadelphia300 "
Providence106 "	Buffalo360 "

SHORT AUTOMOBILE TRIPS

(Round trip distances from East Northfield)

Millers River Drive and French King Bridge20 mi.
Brattleboro, Vt.26 "
Greenfield, Mass.28 "
Warwick Brook Drive via Winchester, N.H.30 "
Old Deerfield, Mass.35 "
Spofford Lake, N. H.35 "
Green River Drive45 "
Keene, N. H.44 "
West River Drive (Newfane, Vt.)55 "
Cathedral in the Pines (Rindge, N. H.)70 "
Whitingham Dam (Vt.)70 "
Mount Monadnock via Keene74 "
College Circuit95 "
Mohawk Trail (Hairpin Turn)96 "
Molly Stark-Taconic-Mohawk Trails145 "

SAMPLE CITIZENSHIP GUIDE

I. OBEYS LAWS

1. Stays in own room	Dependable	
2. Goes to room on time		
3. Turns light out on time	Usually dependable	
4. Is prompt for appointments		
5. Is quiet during Study Hall and after lights out	Somewhat neglectful	
6. Obeys other school customs and regulations	Neglectful	

II. PERSONAL RESPONSIBILITY

1. Observes good health habits	Dependable	
2. Secures assignments and works independently	Usually dependable	
3. Uses time well	Somewhat neglectful	
4. Observes dormitory routines such as signing out, reading bulletin boards, etc.	Neglectful	

III. RESPONSIBILITY IN SOCIAL RELATIONS

1. Courteous	Dependable	
2. Considerate	Usually dependable	
3. Takes suggestions well	Somewhat neglectful	
4. Constructive and cooperative in dormitory	Neglectful	

MEMORANDA

INDEX

Activities

	PAGE
Banking Hours	57
Cabinet	5
Campus Government Association	4
Campus Government Association	3
Church	5
Constitution of C.G.A.	28-34
Day's Schedule	17
Days to Remember	18-19
Domestic Work	8
Dramatics	11
Health	41
History of Campus	3
Infirmary Hours	57
Library	16
Library Hours	57
Mail Hours	57
Map of Campus	26-27
Map of Northfield Roads and Trails	46-47
Music	10
Northfield Athletic Association	6

INDEX (Continued)

	PAGE
Outing	7
Point System	12-15
School Motto	2
School Songs	24-25
Social Activities	9
Who's Who	54-56

Customs, Rules, and Regulations

Absence from Campus or Dormitory	42
Academic Work	35
Campus Regulations	37
Citizenship Guide	59
Dates	51
Domestic Work	36
Dormitory Regulations	37
Dress	40
Fire Drills	38
Hospitality	50
Routes for Walks and Bike Trips	43-44
Senior Privileges	52-53
Weekends and Overnights	48-50

TENTATIVE CALENDAR FOR 1956-1957

September	17, Monday, Registration
	18, Tuesday, Tests
	19, Wednesday, Classes begin
November	21, Wednesday, Thanksgiving recess begins 8:00 a.m.
	25, Sunday, Thanksgiving recess ends, 6:00 p.m.
December	15, Saturday, Christmas vacation begins 8:00 a.m.
January	3, Thursday, Vacation ends, 6:00 p.m.
	12, Saturday, College Board Examinations
February	4, Monday, Second semester begins
	10, Sunday, Observance of Founder's Day
March	16, Saturday, College Board Examinations
	22, Friday, Spring vacation begins, 8:00 a.m.
April	3, Wednesday, Vacation ends, 6:00 p.m.
	21, Easter Sunday
May	4, Saturday, Tree Day
	5, Sunday, Sacred Concert
	18, Saturday, College Board Examinations
June	2, Sunday, Baccalaureate
	9, Sunday, Commencement