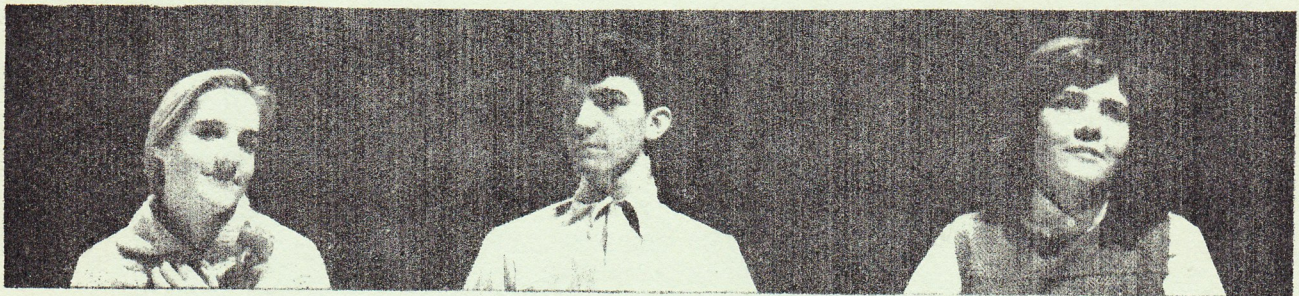


# PLAY Festival



January 8-7:30



January 11-7:30



January 13-8:00

M C C L U E R H I G H S C H O O L

A N N U A L P L A Y F E S T I V A L

J A N U A R Y 8, 11, 13

YOU BE THE JUDGE

BY ATTENDING ALL THREE NIGHTS

(BALLOTS WILL BE PROVIDED FOR  
ALL HOLDERS OF \$1.50 TICKETS  
ON SATURDAY NIGHT.)

TEACHERS ARE ENCOURAGED TO FILL  
OUT EVALUATION FORMS EACH NIGHT  
OF THE PERFORMANCES. THESE FORMS  
ARE AVAILABLE AT THE TICKET DESK.

THESE PLAYS ARE DIRECTED AND PERFORMED BY DRAMA I STUDENTS,  
DRAMA II STUDENTS, AND FRIENDS OF THE DRAMA DEPARTMENT.

MONDAY, JANUARY 8

"THE VALIANT" by Holworthy Hall and Robert Middlemass

Director: Robin Armbruster\* Asst. Dir.: Penny Blatz

CAST

Warden Holt . . .	Larry Hanna	James Dyke . . .	Greg Tyc
Father Daly . . .	Richard Montegue	Josephine Paris.	Gail Crawford
Attendant . . .	Mike Heyn	Jailer . . . . .	Don Appel

Scene: Warden's office in the State Prison at Wethersfield,  
Connecticut

Time: About half-past eleven on a rainy night

Produced by special arrangement with David McKay Co., Inc.

\* \* \* \* \*

DUET ACTS: Anastasia Sue Clubb and Debi Petit  
The Skin of Our Teeth Terry Ames, Candy Clausen

TEN-MINUTE INTERMISSION

"THE WEAK SPOT" by George Kelly

Director: Pat Garrett\* Asst. Directors: Sally Hill, Steve Nelson

CAST

Mrs. West . . .	Nancy Hofheinz	Jenny . . . .	Gail Troske
Mr. West. . . .	Joe Heath		

Scene: A middle-class home Time: Anytime

Produced by special arrangement with Samuel French, Inc.

\* \* \* \* \*

"BOX AND COX" by John Maddison Morton

Director: Jim Thomson\* Asst. Director: Terri McCarroll

CAST

John Box, a Journeyman Printer . . . . .	Robert Franklin
James Cox, a Journeyman Hatter . . . . .	Bob Raleigh
Mrs. Bouncer, the Landlady . . . . .	Leah Heincker

\*Members of the National Thespian Society

THURSDAY, JANUARY 11

"THE LONG STAY CUT SHORT" by Tennessee Williams

Director: Shirley Harlan\* Asst. Director: Rhonda Nelson

CAST

Archie Lee Bowman . . Louie Dauten Aunt Rose . . Jan Marshall  
Baby Doll Bowman. . . Donna Cartwright\*

Scene: A cottage in Blue Mountain, Mississippi

Produced by special arrangement with Dramatists Play Service, Inc.

\* \* \* \* \*

"THE MONKEY'S PAW" by W. W. Jacobs & Louis N. Parker

Director: Ginny O'Neil\* Asst. Director: Randy Doerman

CAST

Mr. White . . . Dave Laycock Sgt. Majoe Morris . . John Roberts  
Mrs. White. . . Pat Bohbrink Samson. . . . . Dale Colby  
Herbert White . Neil McCall

Scene: An average living-room on the outskirts of town

Time: Evening

Produced by special arrangement with Samuel French, Inc.

TEN-MINUTE INTERMISSION

DUET ACT: Barefoot in the Park Gary Gibber and Dolly Lewis  
Poor Richard Judy Ehrlich and Don Appel

\* \* \* \* \*

"NELLIE WAS A LADY" by John Kirkpatrick

Director: Debbie Alien Asst. Director: Debbie Janoski

CAST

Ruth . . . . . Kathy Shanks Nellie Lucas . Nancy Stackhouse  
Jan. . . . . Cheryl Welsh A Thug . . . . Ron Kopplin  
Florence Murdock . Celie Leroy A Policeman. . Mike Brown  
Olive Knight . . . Judy Ehrlich

Scene: An apartment on the West Side, Manhattan, New York.

Time: An evening in late spring

Produced by special arrangement with Samuel French, Inc.

\*Members of The National Thespian Society

SATURDAY, JANUARY 13

"A SECOND HONEYMOON" by Dana Netherton

Director: Dana Netherton Asst. Director: Barb Underwood

CAST

Ed Connors . . . .	Mike Rocchio	Marine Sergeant .	Dan Green
Roberta Connors .	Terry Ames	Marine Medic. . .	Frank Arico
Hotel Manager . .	Tim Willis	Marine PFC. . . .	Jim Maples
		Spanish Vocie . .	Jim Thomson*

Scene: A hotel room in Latin America

Time: 1960's. Dawn. Spring.

\* \* \* \* \*

"NEEDLEWORK" by Florence Ryerson

Director: Chris Boevingloh Asst. Director: Joan Shimkus

CAST

Gramma. . . . .	Dorothy Williams	Mr. Wardle .	Kerry Schmidt
Miss Harkness .	Sandy Grob	Judy . . . .	Cheryl Grant
Mrs. Willoby. .	Lizz Harris	Lilymae. . .	Mary Haydn
Miss Kew. . . .	Donna Uzzel	Effie. . . .	Deborah Gerding
Mrs. Staples. .	Sue Clubb	Mrs. Brown .	Pat Goold
Gracia Hale . .	Jan Howard		

Scene: The Art Dept. of Carlson and Kew, Dry Goods and Notions.

Time: The present. Late on a winter afternoon.

Produced by special arrangement with Samuel French, Inc.

TEN-MINUTE INTERMISSION

DUET ACTS: Our Hearts Were Young and Gay Nancy Stackhouse  
Gail Crawford  
A Phoenix Too Frequent Donna Cartwright\*  
Robin Armbruster\*

\* \* \* \* \*

"HER FATAL BEAUTY" or "A SHOP GIRL'S HONOR" by Wilbur Braun

Director: Linda McGuire\* Asst. Directors: Debbie McCoy  
Barb McClure\*

CAST

Milly Blossom, our young and beautiful heroine;  
only a shop-girl . . . . . Debi Petit  
Courtenay Kenilworth, a villain who stops at nothing  
to gain his own unscrupulous ends. . . . . Ken Bouas  
Charles Redfern, Pres. of Humdinger's Store. . . . . Ed Persons  
Terry Maple, a Stock-girl at Humdinger's . . . . . Susan Cox  
Lucy Manville, a traveling saleswoman . . . . . Barb McMahon  
Noble Humdinger, our noble young hero. . . . . Frank McAlister  
Mrs. Alberta Humdinger, his mother . . . . . Candy Clausen  
Victoria Manning, in love with Noble . . . . . Terri McAlister  
Sign Carrier . . . . Chip Cooper Piano Player . . . . Mr. Moore

Scene: The executive offices of Humdinger's Department Store.

\*Members of The National Thespian Society

## PRODUCTION STAFF

### Costumes

Chairman: Penny Norman  
Asst. Chairman: Sandy Wallace

Juanita Easley  
Dan Greene

Terrie McCarroll\*  
Linda Schaefermeyer

### Light and Sound

Ken Bouas\*  
Alan DeFress  
Jim Maples

Terrie McCarroll\*  
Tom McMahon\*  
Dennis Wall\*

Greg Wall  
Rick Walsh  
Dave Wiese

### Make-Up

Chairman: Donna Cartwright\*  
Asst. Chairman: Ruthe Ingerson

Debbie Eckles  
Maggi Goddard  
Linda Grither  
Sandy Grob  
Vickie Hein  
Sharon Key

Charlene Kluge  
Jan Kury  
Dolly Lewis  
Julie McCoy  
Debbie Persels  
Dianne Porter

Karen Ramspott  
Nancy Stackhouse  
Barb Svejkosky  
Donna Uzzell  
Cheryl Welsh

### Programs & Tickets

Chairman: Donna Uzzell  
Asst. Chairman: Vickie Hein

Janet Bell  
Chris Boevingloh  
Sue Brown  
Randy Doerman  
Susan Field  
Sandy Grob

Leah Heincker  
Ruthe Ingerson  
Barb Kilper  
Celie LeRoy  
Jim Maples  
Terrie McCarroll\*

Mary Moore  
Julie Mowry  
Penny Norman  
Diane Porter  
Kerry Schmidt  
Carolyn Wright

### Props

Chairman: Sharon Key

Claudia Netherton

### Publicity

Chairman: Jim Thomson\*  
Asst. Chairman: Terrie McCarroll\*

Terry Ames  
Robin Armbruster\*  
Ellen Bishop  
Ken Bouas\*  
Donna Cartwright\*  
Sue Field  
Dan Green  
Linda Grither

Larry Hanna  
Vickie Hein  
Sharon Key  
Bill Mueller  
Penny Norman  
Bob Raleigh  
Karen Ramspott  
Mike Rocchio

Donna Shine  
Nancy Stackhouse  
Barb Svejkosky  
Greg Tyc  
Donna Uzzell  
Sandy Wallace

### Stage Crew

Chairman: Randy Doerman

Rick Knight  
Celie Leroy

Mary Moore  
Donna Uzzell

\*Members of The National Thespian Society