

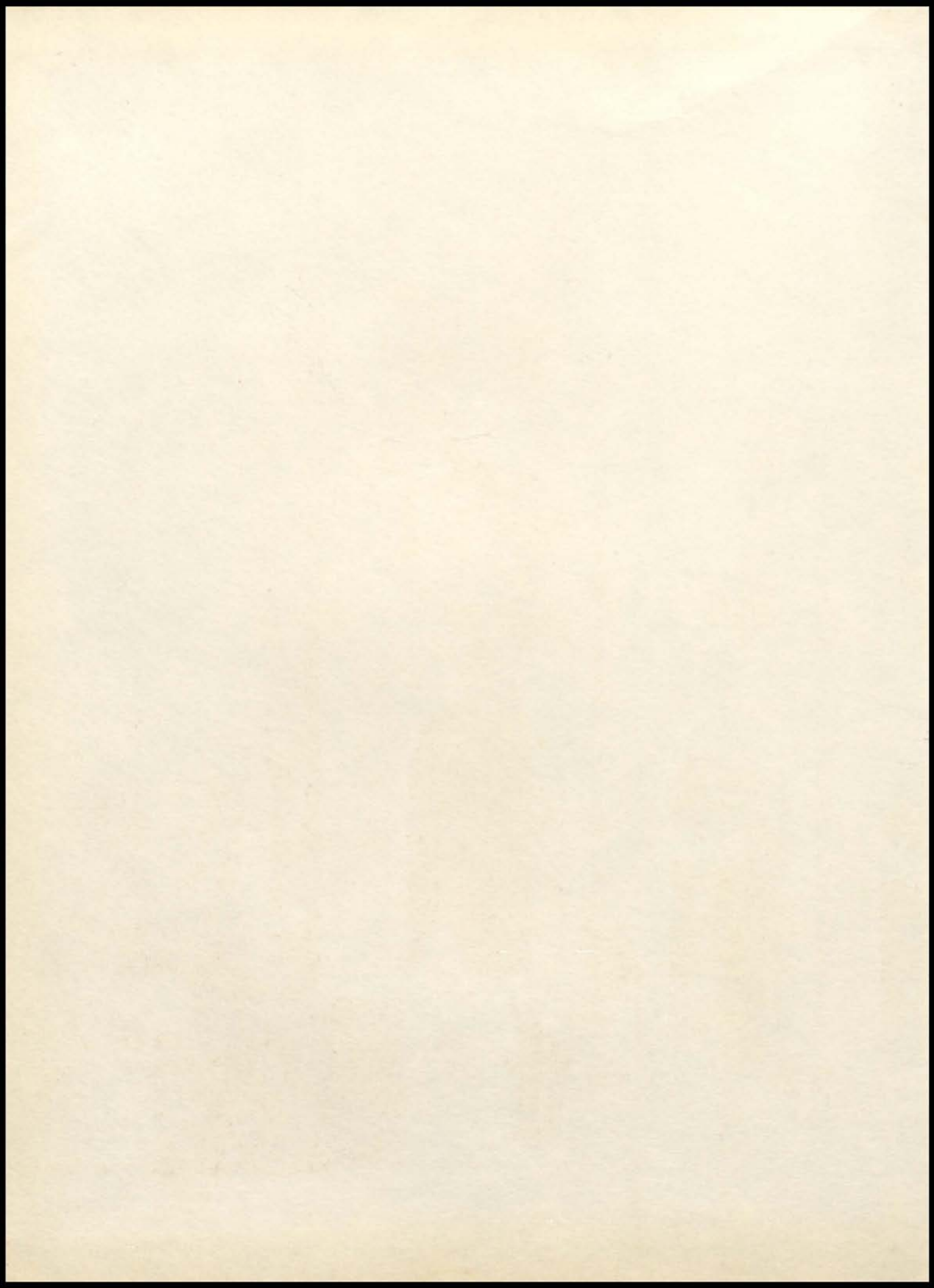
Post 58

Script

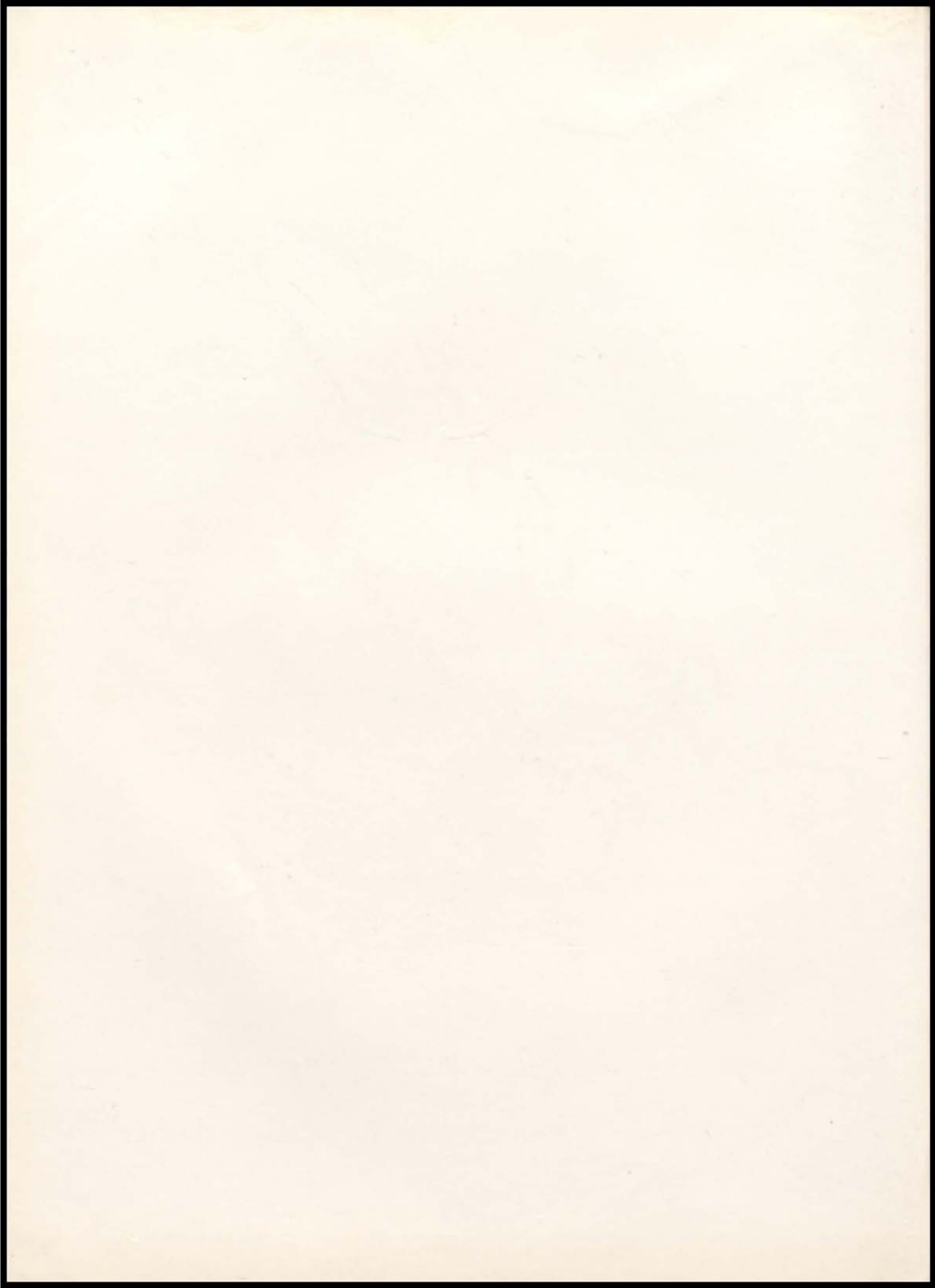












The
YEARBOOK STAFF
Of
MARSHALLTOWN
HIGH SCHOOL
Presents

The 1958
Post Script

VOLUME NINETEEN

Foreword

Your 1958 Post Script will try to help you to remember all the good times at MHS, and relive all the wonderful moments during the '57-'58 school year.

It is our wish that this book pleases every one of you and reminds you of happy days in Marshalltown Senior High School.

To Helen and Florence Boten,



to show our gratitude for all the ways you have helped us through the years,
we dedicate the 1958 edition of "Post Script."

Contents

Seniors

Underclassmen

Faculty

Clubs

Activities

Music

Sports

Advertising

Seniors





RICHARD HARRY ACKERMAN Abbott



JANICE ALEXANDER Franklin
Y-Teens 1; Church League 1, 2, 4; GY 4; Vocational 4.



MARGARET KAY ALLEN Abbott

Y-Teens 1, 2; Glee Club 3, 4; Pep Club 3, 4; GY 3, 4.



DAVID DUANE ANDERSON

Lake City, Iowa

Mixed Chorus 4; Church League 1, 2, 3, 4; Home-room Pres. 3; Band 1, 2, 3; "M" Club 2, 3, 4; Hi-Y 2, 3, 4; Tennis 2, 3, 4; Softball 3; Spanish Club 3, 4.



MARY ELLEN ANDREWS

Rogers

Y-Teens 1; Glee Club 1, 2, 3, 4, Pres. 4; Pep Club 2, 4; Student Senate 4; GY 3, 4; Vocal Festival 3, Letter 4.



ROGER ANKRUM

Anson



KAREN RAE BAKER

Aaron Palmer

Y-Teens 1, 2, Pres. 1; Mixed Chorus 3, 4, Letter 3, Certificate 4; Glee Club 2; GRA 2, 3, 4, Letter 3, Pin 4, Sec. 4, Cabinet 4; Pep Club 1, 2, 3, 4; Church-League 2, 3, 4; Usher 4; Masque and Dagger 3, 4, Plays 3; Class Officer, Vice Pres. 2, Sec.-Treas. 3; GY 3, 4, Sec. 3, Pres. 4, GY Conference 2, 3, 4, State Officer 4, Cabinet 3, 4, Y-Teens Conference 3, 4; Music Groups 3, 4, Band 1, 2, 3, 4, Letter 4; Football Band 1, Basketball Band 3, 4; Scholarship Society 3, 4; Art Club 3; Spanish Club 3, 4; Mermaids 3, 4; Band Festival 2, 3, 4; Vocal Festival 3, 4; Homecoming Attendant 4; Student Senate 4, Sec. 4.



SHIRLEY BALLARD

Aaron Palmer

GRA 3; Pep Club 1, 2, 3; GY 3, 4; Vocational 4.



FRED FRANKLIN BARKER, JR. Glick
Football 1.

HAROLD WILLIAM BARKER Abbott
Masque and Dagger 3, 4; Plays 3; Band 1, 2, 3, 4;
Basketball Band 3, 4; Football 1, 3, 4; Band Festival
2, 3, 4; Pebbles Staff 4.



RICHARD HARLEY BARKER Franklin
Homeroom Officer 1, 2, 3, Pres. 1, 3; Student Senate
1, 3, 4; "M" Club 2, 3, 4, Pres. 4; Hi-Y 1, 2, 3, 4;
Football 1, 2, 3, 4; Basketball 1, 2, 3, 4; Track 1,
2, 3, 4.

THOMAS FREDRICK BENGE Glick
Mixed Chorus 2, 3, 4; Pep Club 2; Church League 1;
Hi-Y 1, 3, 4; Track 1; Vocational 4; Intramurals
3, 4.



BEVERLY ANN BENSON Glick
Y-Teens 1, 2; Glee Club 1, 2, 3; GRA, 2, 3; Pep
Club 1, 2, 3, 4; Church League 2, 3, 4; GY 3, 4;
Vocational 4.

RUSSELL C. BETTS Woodbury
Church League 1, 2, 3, 4; Masque and Dagger 3, 4;
Plays 3, 4; Hi-Y 1, 2, 3, 4; Football 1; Basketball 2;
Track 1.



SANDRA RAE BOLLE Abbott
Y-Teens 1, 2; Glee Club 2, 3, 4; GRA 2; Pep Club
2, 3, 4; Plays 1; GY 3, 4; Pebbles Staff 4.

ARTHUR LEROY BOONE Glick
Mixed Chorus 1, 2, 3, 4; Music Groups 2; Voca-
tional 4.



DORIS JEAN BORTON

Aaron Palmer

FLOYD A. BORTON

Glick

Vocational 4.



MARY ALICE BRADBURY

Glick

Y-Teens 1, 2; GRA 2, 3, 4; Pep Club 1, 2, 3, 4; Church League 1, 2, 3, 4; Usher 4; Masque and Dagger 3, 4; GY 3, 4; Cabinet 4; Twirler 2, 3, 4; Drum Majorette 1; Letter 4; Pebbles Reporter 4; Post Script Staff—Assistant Editor 4; Mermaids 3; Cabinet 3.

PEGGY JO BRAINERD

Franklin

Y-Teens 1, 2; Treasurer 1; GRA 2, 3, 4; Church League 1, 2, 3, 4; Homeroom Officer 2, 3, 4; Sec. Treas. 2, 3; Pres. 4; Student Senate 4; Masque and Dagger 3, 4; Plays 3, 4; GY 3, 4; Y-Teens Conference 1; Band 1; Spanish Club 3, Sec. 3; Mermaids 3; Homecoming Attendant 4.



JAMES NILE BRENNECKE

Franklin

Homeroom Vice Pres. 3; Masque and Dagger 3, 4; Plays 3; Drake Play Festival 3; Award 3; Class Officer 3; Vice-Pres. 3; "M" Club 2, 3, 4; Sec. 4; Hi-Y 1, 2, 3, 4; Pres. 4; Student Senate 4; Golf 2, 3, 4; Jets 4.

RUTH ANN BRENNER

Franklin

Y-Teens 1, 2; Sec. 1; Glee Club 3; GRA 2, 3, 4; Cabinet 4; Pep Club 2, 3, 4; Church League 1, 2, 3; Usher 4; Masque and Dagger 3, 4; Plays 3, 4; GY 3, 4; Cabinet 4; GY Conference 3; Y-Teens Conference 3; Band 1, 2, 3, 4; Twirler Letter 4; Art Club 2, 3; Vice Pres. 3; Mermaids 3; Cabinet 3.



MICHAEL EDWARD BRIMMER

Aaron Palmer

Homeroom Pres. 1; Hi-Y 1, 2, 3, 4; Gym Club 3; Football 1, 2; Basketball 1, 2; Track 1, 3; Tennis 3; Pebbles Staff 4; Spanish Club 3; Intramural Board of Control 3, 4; Church League 3.

DAVID MAX BRINTNALL

Glick

Mixed Chorus 2, 3, 4; Homeroom Vice Pres. 2; Masque and Dagger 3; Plays 3; Music Groups 1, 2, 3, 4; Orchestra 1, 2, 3; Band 1, 2, 3, 4; Vice Pres. 4; Pep Band 1, 2, 3, 4; Track 1, 2; Football 1, 2; Scholarship Society 3, 4; Band Letter 3; Mixed Chorus Letter 3; Festivals 2, 3, 4; Music Scholarship 3.



DICK BROWN Ben Franklin, Des Moines
Church League 3, 4; "M" Club 3, 4; Tennis 2, 3,
4, Letter 3, 4; Pebbles Staff 4.



SIEGRIED CLYDE BRU Glick
Hi-Y 1, 2; Vocational 4.



ROBERT L. BUEGHLY Aaron Palmer
Band 1, 2, 3; Hi-Y 1, 2, 3, 4; Football 1; Basket
ball 1, 2, 3, 4; Tennis 3, 4.



GEORGE BULANEK Glick
Vocational 4.



DONNA LEE BURGESS Aaron Palmer
Y-Teens 1, 2; Mixed Chorus 4; Glee Club 2, 3, 4;
GRA 2, 3, 4; Pep Club 1, 2, 3, 4; Church League
1, 2, 3, 4; Usher 4; GY 3, 4; Band 1, 2, 3, 4, Foot-
ball Band 1, Basketball Band 1; Mermaids 3, 4;
Band Festival 2, 3, 4; Vocal Festival 3, 4.



GAYLEN BURKE Liscomb
Vocational 4.



DALE L. BURKHEIMER Abbott
Church League 2; Spanish Club 3; Intramurals 3;
Vocational 4.



ROBERT LOCKWOOD BUTTON Franklin
Boys' Pep Club 2; Masque and Dagger 3, 4, Plays
3; Scholarship Society 3, 4; "M" Club 3, 4; Hi-Y
1, 2, 3, 4, Sec. 2; Football Manager 3, 4, Letter 3,
4; Basketball Manager 3, 4, Letter 3, 4; Golf 2, 4;
Pebbles Staff 4; Post Script Staff—Sports Editor 4.



PATRICIA ANN CATLIN Aaron Palmer
Y-Teens 2; Glee Club 2, 3; GY 3, 4; Vocational 4.

GLORIA ANN COATNEY Aaron Palmer
Vocational 4.



BRYAN LAWRENCE COLE Franklin
Church League 1, Homeroom Sec. 2; Masque and
Dagger 3, 4, Plays 3, 4; "M" Club 3, 4; Hi-Y 1,
2, 3, 4; Track 1, 2, 3; Football 1, 2; Basketball 1,
2, 3, 4; Gym Club 4; Intramural Board of Control
3; Boys' State 4.

MARIS DEE COLLINS Arnold
Y-Teens 1, 2; Mixed Chorus 4, Pres. 4; GRA 2,
3, 4, Cabinet 4, Letter 3, Pin 3; Pep Club 1, 2, 3,
4; Church League 1, 2, 3, 4; Homeroom Pres. 1,
2; Student Senate 1, 2, 4, Sec. 1; Masque and Dagger
3, 4; GY 3, 4, Cabinet 4, GY Conference 3; Cheer-
leader 1, 2, 3, 4, Head Cheerleader 1; Scholarship
Society 3, 4; Spanish Club 3, 4; Mermaids 3.



JEANNIE COOK Aaron Palmer
Y-Teens 1, 2; Mixed Chorus 3, 4, Vice Pres. 4, Letter
4; Glee Club 2, Vice Pres. 2; Pep Club 1, 2, 3, 4;
Homeroom Officer 2, 4, Vice Pres. 2, Sec-Treas. 4;
Student Senate 4; Masque and Dagger 3, 4; GRA 3,
4, GRA Conference 3, 4; GY 3, 4; Y-Teen Con-
ference 4; Music Groups 3, 4, Quartet 3, 4; Cheer-
leader 2, 3, 4, Head Cheerleader 4; Post Script
Staff—Adv. Manager 4; Pebbles Reporter 4; Mer-
maids 3.

JAMES DONALD COPE Anson
Mixed Chorus 1, 3, 4; Plays 1; Basketball 1; Voca-
tional 4.



LORRAINE COULTER Franklin
Y-Teens 1, 2; GY 3; Band Ensembles 1, 2; Orchestra
2, 3; Band 2, 3, 4; Basketball Band 2, 3; Voca-
tional 4.

JANICE CRAMER Eldora
Church League 1, 2, 4, Treas. 4; Homeroom Sec-
Treas. 4; Vocational 4; DECA 4, Treas. 4.



JOAN MARIE CURSON Anson
Glee Club 1, 2, 3, 4; Pep Club 3, 4; Church League
1; GY 3, 4; Music Festival 3; Glee Club Letter 4.

GEORGE OWEN DANIELSON Glick
Jets 4.



ZELDA LEE DANNEN LaMoille
Mixed Chorus 1; Glee Club 1; GRA 2, 3, 4; Pep
Club 2, 3, 4; Usher 4; Plays 1; GY 3, 4; Vocational
4; Art Club 2; 4-H Club 1, 2, 3, 4, Reporter 1, Sec-
Treas. 2, Pres. 4; Basketball (From LaMoille) 1.

MARCIA RAE DAVENPORT Rogers
Y-Teens 1, 2; GRA 2, 3, 4; Pep Club 1, 2, 3, 4;
Church League 1, 2, 4; Homeroom Vice Pres. 2;
Masque and Dagger 3, 4, Plays 3; GY 3, 4, Vice
Pres. 3, Cabinet Advisor 4; Band 1, 2, 3, 4; Pep
Bands 1; Art Club 2; Band Festival 2, 3, 4.



RICHARD DAVENPORT Franklin
Band 1, 2, 3, 4; Football Pep Band 3.

JOHN DAVID DeBUTTS Melbourne
Church League 1, 2, 3, 4; Hi-Y 1, 2, 3, 4; Football
1, 3; Track 3; Golf 1; Jets 4; Assistant Photogra-
pher 4.



ROBERT LeROY DENT Taylor No. 6
Student Senate 1; Football 1; Track 1, 2, 3, 4; Bas-
ketball 1; Jets 4.

SALLY DICKERSON Rogers
Y-Teens 1, 2; Glee Club 3; GRA 2, 3, 4; Pep Club 1,
2, 3, 4; Church League 1, 2, 3, 4; Usher 4; Masque
and Dagger 3, 4, Plays 3; GY 3, 4; Band 1; Cheer-
leader 1; Spanish Club 4; Pebbles Staff 4.



JOHN ALLEN DICKKUT

Albion

Mixed Chorus 1; Glee Club 1; Student Senate 4; Class Officer 1, 2, 3, 4, Pres. 1, 2, 4, Vice Pres. 3; Band 1, 2; "M" Club 3, 4; Hi-Y 3, 4; Football 1, 2, 3, Letters 1, 2, 3; Basketball 1, 2, 3, 4, Letters 1, 2, 3, 4; Track 1, Letter 1; Boys' State 3.

JANYCE DIGGINS

Aaron Palmer

Y-Teens 1, 2, Pres. 2; Pep Club 2, 3, 4; Church League 1; Student Senate 2; Plays 1; GY 3, 4.



JOYCE DIGGINS

Aaron Palmer

Y-Teens 1, 2; GRA 2, 3, 4; Pep Club 2, 3, 4; Church League 1; Plays 1; GY 3, 4; Intramural Basketball 1.

MARY DEANNE DOBSON

Rogers

Y-Teens 1, 2; GRA 2, 3, 4; Pep Club 2, 3, 4; Church League 2, 4; Usher 4; Homeroom Officer 1, 3, Vice Pres. 1, Sec-Treas. 3; Masque and Dagger 4; GY 3, 4, Treas. 4, GY Conference 4; Band 1, 2, 3, 4; Spanish Club 3, 4; Band Letter 4; GY Cabinet 4; Band Festival 2, 3, 4.



BARBARA JEANNE DOLL

Abbott

Y-Teens 1, 2; GRA 2; Pep Club 2, 3, 4, Plays 1; GY 3, 4; Scholarship Society 4; Pebbles Staff 4.

BARBARA JEANNE DONALDSON

Aaron Palmer

Y-Teens 1; GRA 2, 3, 4; Pep Club 1, 2, 3, 4; Church League 2, 4, GY 3, 4.



HELEN DONALDSON

Anson

Y-Teens 1, 2; Pep Club 3, 4; GY 3, 4; Vocational 4.

RONALD EUGENE D'ORAZIO

Glick

Homeroom Pres. 2, 3, Student Senate 2, 3; Hi-Y 1, 2, 3, 4; Football 1, 2, 3, 4; Track 1, 2, 3, 4.



JERRY LEE DOWNING

Rogers

Church League 4; Homeroom Vice Pres. 2, 3; Plays 4; Class Sec.-Treas. 4; "M" Club 2, 3, 4; Sgt.-at-Arms 4; Hi-Y 1, 2, 3, 4; Vice Pres. 4; Football 1; Basketball 1; Track 1, 2, 3, 4; Letters 1, 2, 3, 4; Cross Country 2, 3, 4; Letters 2, 3, 4, Captain 4.

DAVID PERREN DREW

Franklin

Church League 1, 2, 3, 4; Homeroom Sec. 1; Masque and Dagger 3, 4; Plays 3, 4; Band 1, 2, 3; Hi-Y 1, 2, 3, 4; Chaplain 1, 2; Football 1, 2; Golf 2, 3, 4; Softball 3, 4; JETS 4; Intramural Board of Control 3, 4, Sec. 3, 4.



MARILYN DUNCAN

Glick

JUDITH DUNN

Falls City, Nebraska

Plays 1.



PAULINE DUTTON

Franklin

Glee Club 2, 3.

PATRICK EUGENE DYRLAND

LaMoille

Glee Club 1; Plays 1; "M" Club 4; Hi-Y 1, 2, 3, 4; Football 1, 2, 3, 4; Basketball 1, 2; Track 3; Gym Club 3, 4.



CHARLES ECKLES

Taylor No. 4

Church League 3, 4; Student Senate 4; Masque and Dagger 3, 4; Plays 1, 3, 4; Scholarship Society 3, 4; Hi-Y 1, 2, 3, 4; Basketball 1, 2; Track 1; Pebbles Staff 4; Post Script Staff 4; Intramural Board of Control 3, 4; Chairman 4; State Speech Contest 4.

GLENDA EGGLESTON

Aaron Palmer

Y-Teens 1, 2; Sgt.-at-Arms 2; Mixed Chorus 3, 4; Glee Club 1, 2; GRA 2, 3, 4; Pep Club 2, 3, 4; Church League 2, 3; Usher 4; Masque and Dagger 3, 4; Plays 3; GY 3, 4; Music Groups 3; Band 1, 2, 3, 4; Football Band 1; Basketball Band 1; Spanish Club 3, 4; Band Festival 2, 3, 4; Mixed Chorus Festival 1, 2, 3, 4.



JEAN MARIE EICHORN Franklin
Y-Teens 1; GY 3, 4; Music Groups 1; Band 1, 2, 3, 4; Spanish Club 3, 4.



SHARON LEE ELLIS Glick
Y-Teens 1; Mixed Chorus 4; GRA 2, 3, 4; Pep Club 2, 3, 4; Church League 3, 4; GY 3, 4; Art Club 2.



JEAN CLAUDE LOUIE ENGSTROM Seine, France
Mixed Chorus 1, 3; "M" Club 3, 4; Track 3; Vocational 4.



ROGER EUBANK Woodbury
Mixed Chorus 3, 4.



BONNIE KAY EVANS Rogers
Y-Teens 1, 2; Mixed Chorus 4; Glee Club 3; GRA 2, 3, 4; Pep Club 2, 3, 4; Church League 1, 2, 3, 4; Usher 4; Masque and Dagger 3, 4, Plays 3; GY 3, 4; Band 1, 2, 3, 4; Spanish Club 3, 4; Band Festival 2, 3, 4, Letter 4.



KAREN JOAN EWALT Timber Creek No. 4
Mixed Chorus 1; Glee Club 1; Homeroom Sec. 1; Cheerleader 1; Basketball 1; Vocational 4.



EDWIN FARBER Boulder, Colorado
Church League 1, 2, 3, 4; Homeroom Officer 2, 4, Pres. 2, Vice Pres. 4; Student Senate 2; Masque and Dagger 3; Band 1, 2, 3; Football Pep Band 3; Scholarship Society 3, 4, Vice Pres. 4; "M" Club 3, 4; Hi-Y 1, 2, 3, 4, Vice Pres. 1, Treas. 2, 4; Football 1, 2, 4; Basketball 1, 2; Track 3, Letter 3; Golf 2, 4; Softball 3; Intramural Board of Control Sec. 3.



TOM FAULKNER Newton, Iowa
Vocational 4; Activities at State Center—Mixed Chorus 3; Glee Club 3, Plays 3; Class Vice Pres. 3; Football 3; Basketball 3; Baseball 3; Activities at Newton—Hi-Y 1, 2; Football 2; Track 1, 2; Wrestling 1, 2.



RALPH FINCH Woodbury
Homeroom Pres. 4; Student Senate 4; "M" Club 2, 3, 4; Hi-Y 1, 2, 3, 4; Football 1; Basketball 1, 2, 3, 4; Track 1, 2, 3, 4; Pebbles Staff 4; Spanish Club 4; Baseball 3, 4; Cross Country 2, 3, 4.



MARY FISCUS Glick
Y-Teens 1, 2; Band 1, 2, 3, 4.



MARTHA SUZAN FORAN Franklin
Glee Club 1; Vocational 4.



ANN FREESE Arnold
Y-Teens 1, 2, Treas. 1; GRA 1, 2, 3, 4; Pep Club 1, 2, 3, 4; Church League 1, 2, 3, 4; GY 3, 4; Mariners 2, 3, 4.



MARILYN ALICE FRITZ Aaron Palmer
Vocational 4, DECA Club 4.



DONNA LOU FUGATE Aaron Palmer
Y-Teens 1, 2; Mixed Chorus 3, 4; Glee Club 1, 2; GRA 2, 3, 4; Pep Club 1, 2, 3, 4; Church League 1, 2; Usher 4; Homeroom Pres. 3; Student Senate 3, 4; Masque and Dagger 3, 4, Plays 3, 4; GY 3, 4; Music Groups 3; Orchestra 1, 2, 3, 4, Pres. 4; Scholarship Society 3, 4, Sec. 4; Pebbles Reporter 4; Post Script Staff—Senior Editor 4; Spanish Club 3, 4; Mariners 3, 4.



KAYLENE GALLENTINE Linn No. 2
Y-Teens 1; Glee Club 1, 2; GRA 4; Pep Club 3, 4; Church League 4; GY 3, 4; Usher 4; 4-H 1, 2.



BRIAN GARRINGTON
Church League 3; Orchestra 1, 2, 3; Hi-Y 1, 4; Football 1; Basketball 1, 2, 3, 4; Golf 3; Cross Country 4.



HELEN GIARRATANO Austin, Minn.
Vocational 4; DECA Club 4.



DAVID GIBSON San Fernando, Calif.
Pebbles Staff 4.

Activities in California—Tiger Teens; Stage Crew; Athletic Committee; Prom Committee; Dance Committee; School Art Director; Sound Engineering Crew.



SANDRA KAYE GLANS Arnold
Y-Teens 1, 2; GRA 3, 4, Vice Pres. 3, Pres. 4, Letter and Pin 3; Pep Club 1, 2, 3, 4; Church League 1, 2, 3, 4, Council 2; Homeroom Officer 1, 2, 3, 4, Sec.-Treas. 1, 4, Vice Pres. 2, 3; Class Sec.-Treas. 2; GY 3, 4, GY Conference 3; Cheerleader 1, 3, 4; Scholarship Society 4; Spanish Club 3, 4; Girls' State 3.



MARILYN GOODING Franklin
GRA 3, Homeroom Sec.-Treas. 4; Orchestra 2, 3; Band 1, 2, 3; Art Club 3; Vocational 4.



DOUGLAS LESTER GRAHAM Glick
Church League 3, 4; Masque and Dagger 3, 4, Plays 1, 4; Music Groups 2; Orchestra Quartet; Orchestra 1, 2, 3, 4; "M" Club 3, 4; Hi-Y 1, 2, 3, 4; Football 3, 4, Letter 3; Basketball 2; Track 1, 2, 3, 4; Baseball 3, 4; Gym Club 3; Orchestra Festival 3, 4.



MAUREEN KAY GUMMERT Glick
Y-Teens 1, 2; Glee Club 1, 3; GRA 2, 3, 4; Pep Club 1, 2, 3, 4; Church League 1, 2, 3; GY 3, 4; Music Groups 3; Vocational 4.



SHERRILL KAY HALEY Aaron Palmer
Y-Teens 1, 2; GRA 2, 3; Pep Club 1, 2, 3, 4; Church League 1, 2, 3, 4; GY 3, 4; Band 1, 2, 3; Vocational 4.



ROBERT HERSUL HARMON Glick
Hi-Y 4; Football 1; Track 1, 3; Car Club 3, 4.



LINDA HARRISON

Woodbury

Glee Club 1; GRA 4; Pep Club 1, 4; GY 3, 4; Vocational 4; Y-Teens 1, 2.

JANICE ANNETTE HARVEY

Franklin

Y-Teens 1, 2; GRA 3, 4; Pep Club 1, 2, 3, 4; Church League 2, 3, 4; Masque and Dagger 4; Plays 4; GY 3, 4; Band 1, 2, 3, 4; Mariners 3, 4; Band Festival 2, 3, 4; Band Letter 4.



ROBERT HAYES

Abbott

Church League 1, 2, 4; Vocational 4; Gym Club 4; Weight-Lifting Club 4.

BONNIE GAIL HAYES

Woodbury

Glee Club 4; Pep Club 3, 4; Church League 3, 4; Plays 4; GY 4; Band 1, 2, 3, 4.



DAVID LOUIS HEMPHILL

Franklin

Church League 2, 3, 4; Student Senate Vice Pres. 4; Orchestra 3, 4, Letter 4; Band 1, 2, 3, 4, Pres. 4, Letter 3; Football Band 4; Basketball Band 2, 3, 4; Hi-Y 1, 2, 3, 4; Football 1; Basketball 1; Golf 2, 3, 4, Letter 4; Band Festival 2, 3, 4; Orchestra Festival 3, 4.

KAREN MAURINE HILLEMANN

Rogers

Y-Teens 1, 2; Glee Club 2, 3; Pep Club 1, 2, 3, 4; Masque and Dagger 3, 4; GY 3, 4; Spanish Club 3, 4.



JANICE MAE HOBSON

Abbott

Y-Teens 1; GRA 4; Pep Club 4; Church League 2, 4; Masque and Dagger 3, 4, Plays 1; GY 3, 4; Post Script Staff 4; Spanish Club 3, 4; Assistant Librarian 1, 2, 3, 4; Pebbles Staff 4.

ROBERTA HODGDON

Aaron Palmer

Y-Teens 1, 2; GRA 3; Pep Club 1, 2, 3, 4; Church League 1, 2, 3; Masque and Dagger 3, Plays 3; GY 3, 4; Art Club 3, 4.



HERBERT FRANKLYN HOOP Rogers
Mixed Chorus 2, 3, 4; Masque and Dagger 3, 4,
Plays 3, 4; Hi-Y 1, 2, 3, 4; Post Script Staff 4; Gym
Club 4; Pebbles Staff 4.

RICHARD EWERS HORTON Franklin
Mixed Chorus 4, Festival 4; Church League 3; Home-
room Pres. 4; Student Senate 4; Orchestra 2, 3, 4,
Letter 4, Festival 2, 3, 4; Band 1, 2, 3, 4, Letter 4,
Festival 2, 3, 4; Football Band 1, 2, 3, 4, Pres. 4;
Basketball Band 2, 3, 4; Scholarship Society 3, 4;
"M" Club 4; Hi-Y 2, 3, 4; Football 1; Basketball
1, 2; Tennis 2, 3, 4, Letter 3.



LARRY GAYLE JACOBSON Boxholm, Iowa
Mixed Chorus 3, 4; Church League 3, 4; Hi-Y 3, 4.
LYONA JASPERS Rogers
Vocational 4.



JIM RAY JOHNSON Anson
Plays 1; Basketball 1, 2; Vocational 4.

LARRY DEAN JOHNSON Glick
Homeroom Officer 1, 2, 3; Student Senate 1, 2, 3;
Band 1; "M" Club 3, 4; Hi-Y 1, 2, 3, 4; Football
1, 2, 3, 4; Track 1, 2, 3, 4; Vocational 4; Gym
Club 3, 4.



LONDELL DEAN JOHNSON Gladbrook
Mixed Chorus 1, 2, 3, 4; Class Vice Pres. 1; Foot-
ball 1; Bowling Officer, Sec.-Treas. 4.

JOYCE DARLENE JONES Gladbrook
Glee Club 1; Basketball 1; Vocational 4.



WILLIAM CLARKSON KELLEY

Aaron Palmer

Hi-Y 1, 2, 3; Track 1; Jets 4.

RICHARD KNAPPEN

Newton, Iowa

Mixed Chorus 2, 3, 4.



MARILYN ANN KNEELAND Franklin

Y-Teens 1, 2; Mixed Chorus 4; Glee Club 1, 2, 3; Church League 2, 3, 4; Homeroom Sec.-Treas. 1; GY 3, 4; Music Groups 3; Scholarship Society 3, 4; Spanish Club 3, 4; Library Assistant 1, 3, 4.

PAUL DEAN KOEHLER Aaron Palmer

Church League 1, 2, 3, 4; Masque and Dagger 3, 4; Plays 1, 3, 4; Band 1; Hi-Y 1, 2, 3, 4; Football 1; Basketball 1; Track 1; Softball Church League 2, 3.



KAREN JEAN KRALIK Glick

Y-Teens 1, 2; Glee Club 3, 4; GRA 2, 4; Pep Club 1, 2, 3, 4; Church League 1, 2, 3, 4; GY 3, 4; Band 1, 2, 3, 4; Basketball Band 2, 3; Spanish Club 3, 4; Band Festival 2, 3, 4, Letter 3.

SEYMAN KRANTMAN Arnold

Church League 1, 2, 3, 4; Homeroom Vice Pres. 1, 4; Hi-Y 1, 2, 3, 4; Basketball Intramurals 3, 4.



DARLENE KRUSE Anson

Y-Teens 1, 2; Glee Club 1, 2, 3, 4, Vice Pres. 3; GRA 2, 4; Pep Club 2, 3, 4; Church League 2, 3; GY 3, 4.

ADA MAEDINE LACEY

Timber Creek No. 2

Glee Club 1, Plays 1.



LINDA LEE LAMER

Woodbury

Y-Teens 1, 2; Mixed Chorus 4; Glee Club 1, 2, 3; Usher 4; Masque and Dagger 3, 4; Plays 3, 4; GY 3, 4; Y-Teen Conference 3; Band 1, 2, 3; Spanish Club 3.

JERROLD PAUL LOKENSGARD

Glick

Mixed Chorus 2, 3, 4, Letter 3, Festival 2, 3, 4; Masque and Dagger 3, 4; Music Groups 2, 3, 4; Orchestra 2, 3, 4, Letter 4, Festival 2, 3, 4; Band 1, 2, 3, 4, Letter 3, Festival 2, 3, 4; Basketball Band 2, 3, 4; Scholarship Society 3, 4; Hi-Y 3, 4; Football 1, 2, 3, 4; Track 1, 2, 3, 4; Music Scholarship 3.



GARY LONEY

Franklin

Church League 1, 2, 3, 4; Masque and Dagger 3, 4; Plays 3, 4; Band 1; "M" Club 2, 3, 4; Hi-Y 1, 2, 3, 4; Football 1, 2, 3, 4; Track 1, 2, 3, 4.

HAL ALLEN LONEY

Lamoille

Mixed Chorus 1; Glee Club 1; Homeroom Pres. 4; Student Senate 4; Band 1; Basketball 1.



RICHARD JAMES LONEY

Spring Valley No. 2

Basketball 1; Vocational 4; Baseball 1.

HERBERT ALLEN LONG

Aaron Palmer

Hi-Y 2, 3, 4; Football 3, 4.



LARRY LUKEHART

Anson

Football 1; Basketball 3; Vocational 4.

JANE ELMA LYNCH

Franklin

Y-Teens 1, 2; Mixed Chorus 4; Music Festival 4; Glee Club 3; GRA 2, 3, 4, Sec. 3, Letter 3, Pin 4; Cabinet 4; Pep Club 1, 2, 3, 4; Usher 4; Head Usher 4; Student Senate 1, 4, Co-Pres. 1; State Conference 4; Masque and Dagger 3, 4, Historian 4, Plays 1, 3, 4, Play Contest 4; GY 3, 4, Cabinet 4, Conference 3, 4, Treasurer 3.



PATRICIA KAY McCORD Anson
Y-Teens 1, 2; Mixed Chorus 4; Gle Club 2, 3; Pep
Club 2, 3, 4; GY 3, 4; Pebbles Staff 4.

GARY ALLEN McCORMACK Glick
Mixed Chorus 4; Masque and Dagger 4, Plays 3,
4; "M" Club 4; Hi-Y 2, 3, 4; Football 1, 2, 4;
Basketball 1, 2, 3, 4; Track 1; Tennis 2, 3, 4;
Pebbles Staff—Sports Editor 4.



GERALDINE McELROY Pomona, California
Glee Club 1, 2, 3; Vocational 4; Spanish Club 1.

EDWARD LEROY McFARLAND Anson
Glee Club 1; Homeroom Sec.-Treas. 1; Basketball
1, Manager 1; Vocational 4.



CATHERINE ANN McGREGOR Glick
Y-Teens 1, 2; Mixed Chorus 3, 4, Letter 4; Glee
Club 2; GRA 2, 3, 4, Letter and Pin; Pep Club
1, 2, 3, 4; Church League 1, 2, 3, 4, Vice Pres. 3;
Usher 4; Masque and Dagger 3, 4, Plays 4; GY
3, 4, GY Conference 3, 4; Y-Teens Conference 4;
Post Script—Activity Section 4; Pebbles Reporter 4;
Spanish Club 3, 4.

JAMES McHENRY Floyd, Iowa
Activities at Floyd—Homeroom Pres. 1; Plays 3;
Baseball 1, 2.



LAWRENCE WAYNE McKELVEY Clemons, Iowa
Vocational 4; Activities at Clemons—Music Groups
1, 2; Basketball 2.

SHARON JANE McKIBBEN Franklin
Y-Teens 1, 2; GRA 2, 3, 4; Pep Club 1, 2, 3, 4,
Usher 4; Homeroom Vice Pres. 3; Masque and
Dagger 3, 4, Plays 3, 4; GY 3, 4, GY Conference
4; Orchestra 4, Festival 4; Band 1, 2, 3, 4, Festival
2, 3, 4; Spanish Club 3, 4.



DICK MAHLE

Anson

Glee Club 1; Music Groups 1; "M" Club 2, 3, 4; Basketball 1, 2, 3, 4; Tennis 1, 2, 3, 4; Hi-Y Conference 1.



GARY MANN

Band 1, 2, 3, 4; Vocational 3.



LARRY GENE MARTIN

Glick

Track 1; Vocational 4.



ROBERT ALAN MASON

Monroe, La.

Hi-Y 2, 3, 4; Football 1, 4; Basketball 3; Track 4; Cross-Country 3.



JANICE LOU MATNEY

Glick

Glee Club 1; Vocational 4.



KATHARINE LENORE MELDAHL

Franklin

Y-Teens 1, 2; GRA 2, 3, 4; Pep Club 1, 2, 3, 4; Church League 1, 2, 3, 4, Usher 4; Student Senate 4; Masque and Dagger 3, 4; Plays 3, 4; GY 3, 4; Band 1, 2, 3, 4, Letter 4; Spanish Club 3, 4; Pebbles Staff 1, 4; Post Script—Editor 4; Journalism Scholarship 3.



SHARON MAY MENTER

Anson

Y-Teens 1; Mixed Chorus 3, 4; Glee Club 1, 2; Pep Club 2; GY 3, 4.



TIMOTHY NELSON MERRILL

Franklin

Homeroom Officer 1, 2, 3, Sec. 1, Vice Pres. 2, Pres. 3; Student Senate 3, 4; Plays 1, 3; Scholarship Society 3, 4; Hi-Y 1, 2, 3, 4; Football 1; Basketball 2, Manager 2; Softball 3; Spanish Club 3, 4; Gym Club 3, 4; Jets 4.



DARWIN MEYER Rogers
Church League 1; "M" Club 4; Hi-Y 1, 2, 3, 4;
Football 1, 4; Basketball 1, 2, 3, 4; Track 1, 3, 4.

INA MAY MIDDLETON Franklin
Y-Teens 1, 2; GRA 2; Pep Club 3; Church League
1; Homeroom Sec.-Treas. 3; GY 3, 4; Orchestra
1, 2, 3; Scholarship Society 3, 4; Spanish Club 3, 4.



SHARON MILLER Rogers
Y-Teens 1, 2, GRA 2, 3, 4; Pep Club 2, 3, 4;
Church League 1, 2, 3, 4; Usher 4; Homeroom Sec.-
Treas. 1; Masque and Dagger 3, 4, Plays 3, 4; GY
3, 4; Orchestra 1.

WARREN WILLIAM MITCHELL Albion
Mixed Chorus 1; Church League 3; Hi-Y 3, 4.



LINDA MOMBERG Clearfield, Utah
Y-Teens 1, 2, Treas.; Glee Club 1; GRA 2, 3, 4;
Pep Club 2, 3, 4; Church League 2, Usher 4; Home-
room Vice Pres. 4; Masque and Dagger 3, 4, Plays
3, 4; GY 3, 4.

MARTHA JEAN MOORE Woodbury
Y-Teens 1, 2; Pep Club 1, 2, 3, 4; Church League
2, 4; Masque and Dagger 3, 4, Plays 4; GY 3, 4.



MARYLIN ROSALIE MOORE Aaron Palmer
Y-Teens 1, 2; Pep Club 3; Church League 1, 2, 3, 4;
Spanish Club 3, 4.

PATRIC MULLEN St. Mary's
Football 1; Vocational 4.



JANICE KAY NASH Muscatine, Ia.
Y-Teens 1, 2; GRA 2, 3; Pep Club 2, 3; Church League 1, 2, 3; Masque and Dagger 3, Plays 3; GY 3, 4; Orchestra 2; Band 1, 2, 3; Spanish Club 4; Pebbles Staff 4.

CHARLES F. NELSON La Moille
Homeroom Officer 3; Student Senate 3; Scholarship Society 3, 4; Hi-Y 3, 4; Football 1, 2, 3, 4; Track 2, 3; Basketball 1, 2, 3, 4.



SHIRLEY ANN NELSON La Moille
Pep Club 4; GY 4; Scholarship Society 4; Activities at La Moille—Plays 1, 2; Class Officer 3.

SHARON MARIE NESS Glick
Y-Teens 1, 2; Glee Club 1, 2, 3; GRA 3; Pep Club 1, 2, 3, 4; GY 3, 4; Driving Club 3, 4, Reporter; Vocational 4.



HARRY NIEDERHAUSER Franklin
"M" Club 3, 4; Hi-Y 1, 2, 3, 4; Football 1, 4; Basketball 1, 2; Track 1, 2, 3, 4.

MARY GAIL NOID Franklin
Y-Teens 1, 2, Sec. 2; Glee Club 3; GRA 2, 3, 4; Historian 3, Cabinet 4; GRA Conference 3; Pep Club 1, 2, 3, 4; Church League 1, 2, 3, 4, Usher 4; Homeroom Officer 1, 3, 4, Pres. 1, Vice Pres. 3, Sec.-Treas. 4; Student Senate 1; Masque and Dagger 3, 4; GY 3, 4, Cabinet 4; Scholarship Society 3, 4; Mermaids 3.



PATRICIA ANN NOID Anson
Y-Teens 1, 2; Glee Club 1, 2, 3, 4; Pep Club 2, 3, 4; GY 3, 4; Scholarship Society 4; Music Festival 3.

SANDRA OLSON Pringle Salem, Oregon
Pep Club 4; GY 4.



SHARON OLSON La Moille
Glee Club 3, Pres. 3; GRA 3, 4; Pep Club 3, 4; Church League 3, 4; Usher 4; Homeroom Vice Pres. 4; Student Senate 3; GY 3, 4; Music Group 3; Activities at La Moille—Y-Teens 1, 2; Glee Club 1, 2; Class Sec. 2; Music Groups 1, 2; Band 1, 2; Basketball 1, 2.

MELVIN OSGOOD Timber Creek No. 2
Vocational 4.



KAREN VERA PARRISH Rogers
Y-Teens 1, 2; GRA 2; Pep Club 1, 2, 3, 4; Church League 1, 2; GY 3, 4; Vocational 4.

MARY KATHERINE PATTIE Rogers
Y-Teens 1, 2; GRA 2, 3, 4, Cabinet 4; Pep Club 2, 3, 4; Church League 1, 2, 3, 4, Usher 4; Homeroom Pres. 2, 4; Student Senate 2, 4; Masque and Dagger 3, 4, Plays 1, 3, 4; GY 3, 4, Cabinet 4; Scholarship Society 4; Pebbles Reporter 1, 4; Post Script Staff—Business Manager 4; Art Club 2; Spanish Club 3, 4, Treasurer 3; IHSPA State Treas. 4; Mermaids 4.



JAMES M. PAUL Aaron Palmer
Intramural Board of Control 3.

JEAN ANN PEAK Glick
Y-Teens 1, 2; GRA 3, 4; Pep Club 1, 2, 3, 4; Church League 2; GY 3, 4; Pebbles Staff—Exchange Editor 4; Masque and Dagger 4; Mariners 2, 3, 4.



SHARON JUNE PERFECT Rogers
Y-Teens 1; Glee Club 1; GRA 2; Pep Club 2, 3, 4; GY 2, 3, 4; Band 1, 2, 3; Vocational 4.

GEORGE LESTER PERRY Elmo, Mo.
Intramurals 4; Masque and Dagger 3, 4; Band 3, 4; Track 3, 4, Cross-Country 4; Gym Club 3, 4; Activities at Elmo, Mo.—Class Vice Pres. 2; Band 1, 2; Track 1.



SHIRLEY JOAN PETERSEN Woodbury
Y-Teens 1; Glee Club 2, 3; Pep Club 4; GY 4;
Vocational 4.

LARRY LEE PETERSON Abbott
Vocational 4.



DONALD EUGENE PHILIPPS Anson
Church League 3, 4; "M" Club 2, 3, 4; Hi-Y 2,
3, 4; Basketball 1, 2; Tennis 2, 3, 4; Vocational
4; DECA Club Vice Pres. 4.

LONNY POLAND Columbus, Ind.
Hi-Y 1, 2, 3, 4; Football 1, 2, 3; Basketball 1, 2;
Track 1.



BETTY JEAN PRITCHETT Glick
Y-Teens 1, 2; GRA 2, 3, 4; Pep Club 1, 2, 3, 4;
Church League 1, 2, 3, 4; Homeroom Pres. 4; Stu-
dent Senate 4; Plays 1; GY 3, 4; Band 2; Pebbles 1.

PENNY PROCTOR Arnold
Y-Teens 1, 2; Glee Club 3; GRA 2, 3, 4; Pep Club
1, 2, 3, 4; Church League 1, 2, 3, 4; Church League
Council Pres. 4; Usher 4; Homeroom Officer 1, 2,
Vice Pres. 2, Sec.-Treas. 1; Masque and Dagger 3,
4; Plays 3, 4; GY 3, 4, GY Conference 3; Pebbles
Staff—Business Manager 4; Mermaids 3, Vice Pres.,
Pres. 4; Spanish Club 4.



JIM PURVIS Linn No. 2
Hi-Y 1, 2.

KAREN JEAN PURVIS Linn No. 2
Y-Teens 1, 2; Glee Club 1, 2, 3, 4; Pep Club 1,
2, 3; Church League 4; GY 3, 4; Vocational 4.



SHARON KAY QUIRK

St. Mary's

GRA 2; Pep Club 2; Vocational 4.

JIM RADCLIFF

Abbott

Vocational 4.



MARILYN REISINGER

Abbott

Y-Teens 1, 2; GRA 2, 3, 4; Pep Club 1, 2, 3, 4; Church League 1, 2, 3, 4; Usher 4; GY 3, 4, GY Conference 4; Orchestra 4; Band 1, 2, 3, 4, Letter 4; Football Pep Band 1; Basketball Band 4; Band Festival 2, 3, 4; Orchestra Festival 4.

RICHARD WILSON RHINER

Glick

Church League 1, 2, 3, 4; Homeroom Sec. 1; Band 1; "M" Club 2, 3, 4, Treas. 4; Hi-Y 1, 2, 3, 4, Sec. 2; Football 1, 2, 3, 4; Basketball 1, 2, 3, 4; Track 1, 2, 3, 4; Softball 1; Baseball 3, 4.



KAY IRENE RICHESON

Woodbury

GY 3; Spanish Club 3, 4.

STEVE RIDENOUR

Mixed Chorus 3, 4; Plays 3, 4; Band 3, 4; Football Pep Band 3, 4; Hi-Y 3, 4; Pebbles Staff 4; Masque and Dagger 4.



KARL VANCE RINEHART

Abbott

Homeroom Sec.-Treas. 4; Band 1, 2, 3, 4, Letter 4; "M" Club 3, 4; Hi-Y 1, 2, 3, 4; Basketball Statistician 1, 3, 4, Letter 1, 3, 4; Tennis 2; Spanish Club 3.

JO ANN MAE RITLAND

Franklin

Y-Teens 1, 2; GRA 3; Pep Club 1, 3, 4; Church League 1, 2, 3; Homeroom Sec.-Treas. 4; GY 3, 4; Vocational 4.



JOAN LOIS ROBERTSON Franklin
Y-Teens 1, 2; GRA 2, 3, 4; Pep Club 1, 2, 3, 4; Vice President 3; President 4; Church League 1, 2, 3, 4; Usher 4; Homeroom Officer 1, 2, 3; Sec. 1; Vice Pres. 2, 3; Student Senate 4; Masque and Dagger 3; GY 3, 4.

JANET ARLENE ROGERS Aaron Palmer
Y-Teens 1, 2; GRA 2, 3, 4; Pep Club 1, 2, 3, 4; Church League 1, 2, 3, 4; Homeroom Vice Pres. 1; Masque and Dagger 3, 4; Plays 3; GY 3, 4; GY Conference 3; Orchestra 4; Band 1, 2, 3, 4; Football Pep Band 1, Letter 4; Band Festival 2, 3, 4; Orchestra Festival 4; Band Sec.-Treas. 3; Pep Club Sec. 3; Pep Club Cabinet 4; GY Cabinet 4; Church League Council 3.



BEVERLY JAYNE RUDDICK New Providence
Mixed Chorus 1; Glee Club 1, 3; GY 3, 4; Vocational 4.

ALLAN RUDISON Arnold
Church League 1, 2; Homeroom Pres. 1, 2; Student Senate 1, 2; Masque and Dagger 3; Band 1; "M" Club 3, 4; Hi-Y 1, 2, 3, 4; Sgt.-at-Arms 1; Football 1, 2, 3, 4; Basketball 1, 2, 3, 4; Softball 1, 2, 3, 4; Pebbles Staff 4; Art Club 3, 4; Baseball 3, 4.



SANDRA LEE SACCARO Rogers
Y-Teens 1, 2; GRA 2, 3, 4; Pep Club 2, 3, 4; Church League 1, 2, 3, 4; Masque and Dagger 3, 4; Usher 4; GRA Conference 3; Plays 3; GY 3, 4; Band 3, 4; Spanish Club 4.

RICHARD SANDERS Woodbury
Vocational 4.



CLARENCE SCHEFFERT Aaron Palmer
Mixed Chorus 1, 2, 3, 4; Scholarship Society 3, 4.

SARAH SCHEFFERT Aaron Palmer
Mixed Chorus 3; Glee Club 1, 2; GY 3, 4; Music Group 3; Scholarship Society 3, 4; Vocational 4.



LEONARD DUANE SCHNATHORST

Anson

"M" Club 4; Football 4; Track 1, 2, 3, 4; Vocational 4.

THOMAS WILLIAM SHAHAN Woodbury

Homeroom Pres. 3; Student Senate 3; "M" Club 4; Hi-Y 1, 2, 3, 4; Track 3, 4; Cross-Country 3, 4; Baseball Manager 3.



CAROLINE MARIE SHAW

Franklin

Y-Teens 1, 2; Glee Club 1; Pep Club 4; GY 4; Vocational 4; 14-30 Driving Club 4.

VERNA KAY SHAW

Anson

Y-Teens 1, 2; Glee Club 1; Pep Club 2, 3, 4; GY 3, 4; Pebbles Staff 4.



GARY ALFRED SLEEGE

Anson

Mixed Chorus 1; Basketball 1; Jets 4.

AVONELLE ANN SMITH Aaron Palmer

Y-Teens 1, 2; Mixed Chorus 3, 4, Letter 4; Glee Club 1, 2; GRA 2, 3, 4; Church League 1, 2, 3, 4; Homeroom Vice Pres. 1; GY 3, 4; Music Groups 3, 4; Orchestra 1, 2, 3, 4; Orchestra Festival 2, 3, 4, Sec. 4, Letter 4; Pebbles Reporter 4; Post Script—Circulation Mgr. 4; Mixed Chorus Festival 3, 4; Pep Club 1, 2, 3, 4.



SUSAN ANN SMITH

Rogers

Y-Teens 1, 2; GRA 2; Pep Club 1, 2, 3, 4; Church League 3, 4; Masque and Dagger 3, 4; Plays 3, 4; GY 3, 4; Y-Teen Conference 3; Band 1, 2, 3, 4; Spanish Club 3, 4.

AUDREY MARIE SNYDER Aaron Palmer

Y-Teens 1, 2; Glee Club 1; GY 3, 4; Spanish Club 3.



PAUL SNYDER

Anson

Vocational 4.



SANDRA JEAN SPENCER

Glick

Y-Teens 1, 2; Glee Club 1, 2, 4; Spanish Club 3, 4.



DONALD STANLEY

Glick

Football 1; Track 1; Vocational 4.



SONDRA KAY STANLEY

Anson

Y-Teens 1, 2; Glee Club 1, 2, 3, Sec.-Treas. 2; Pep Club 2, 3, 4; GY 3, 4; Vocational 4; Music Festival 3.



THOMAS MAC STANLEY

Aaron Palmer

Church League 1, 2, 4; Hi-Y 1, 2, 3, 4; Track 1, 4; Cross Country 4; Intramurals 4; Pebbles Reporter 4.



DON STOVER

Rogers

Homeroom Officer, Sec.-Treas. 3, Vice Pres. 4; Hi-Y 1, 2, 3, 4; Football 1, 2, 3; Track 1, 2; Gym Club 3; Intramurals 4.



JOHN STREVER

Ames, Iowa

Masque and Dagger 3, 4; Plays 3, 4; Band 1, 2, 3; Intramural Board of Control 4; Senior Manager 4; Hi-Y 1, 2, 3, 4; Football 1; Track 2.



ALICIA LOUISE STRIKE

Aaron Palmer

Y-Teens 1, 2; Glee Club 1; GRA 2, 4; Pep Club 2, 3, 4; Church League 1, 2, 3; GY 3, 4; Vocational 4.



RAYMOND DOUGLAS STRUBLE Glick
Vocational 4.

DICK TALMADGE Rogers
Hi-Y 1, 2, 3, 4; Football 1, 2, 3; Track 1; Pebbles
3, 4, Photographer 4; Post Script 3, 4.



DAVID THOMAS Rogers
Church League 3, 4; Masque and Dagger 3, 4,
Plays 1, 3, 4; Band 1, 2, 3, 4, Letter 4; Hi-Y
1, 2, 3, 4; Football 1; Basketball 1, 2; Tennis 3;
Spanish Club 3, 4; Intramurals 3, 4.

NANCY ANN THOMAS Glick
Y-Teens 1, 2; Mixed Chorus 4; Music Festival 3,
4, Letter 4; Glee Club 3; GRA 2, 3, 4, Letter 3, 4,
Pin 4; Pep Club 1, 2, 3, 4, Cabinet 4; Church League
1, 2, 3, 4, Council 2; Homeroom Officer, Vice Pres.
1, Pres. 3; Student Senate 3; Masque and Dagger
3, 4, Sec. 4; Plays 3, 4; State Speech Contest 3, 4;
Play Festival 3, 4; GY 3, 4, Cabinet 4, GY Con-
ference 3, 4; Music Groups 3, 4; Band 1; Cheer-
leader 1, 2, 4; Scholarship Society 3, 4; Art Club 2.



BEVERLY THORN Anson
Y-Teens 1, 2; Glee Club 1; GRA 2, 3; Pep Club
2, 3; Church League 2, 3; Plays 1, 3; GY 3, 4;
Basketball 1; Vocational 4.

KAY THORNTON Timber Creek No. 3
Plays 1; DECA Club Reporter 4; Music Groups 2;
Vocational 4.



GARY THURSTON Aaron Palmer
Student Senate 4; Masque and Dagger 3, 4, Pres. 4;
Plays 3, 4; Band 1, 2, 3, 4, Letter 4; Football Band
1; Basketball Band 3, 4; Scholarship Society 3, 4,
Pres. 4; Hi-Y 3, 4; Pebbles Staff—Editor 4; Boys'
State 4; State Speech Contest 4; Student Senate Con-
ference 4.

ROCHELLE TUCKER Aaron Palmer
Y-Teens 1, 2; GRA 2, 3; Pep Club 1, 2, 3, 4; GY
3, 4; Vocational 4.



PATRICIA LEE TWEED Portland, Ore.
Mixed Chorus 4; Glee Club 1, 2, 3; Pep Club 3;
GY 3, 4; Post Script—Class Editor 4.

ARLENE RUBY TYCHSEN Aaron Palmer
Y-Teens 1, 2; GRA 2, 3, 4; Pep Club 1, 2, 3, 4;
Church League 2, 3, 4; Usher 4; Masque and Dagger
4; GRA Conference 3, 4; Plays 4; GY 3, 4; Orchestra
2, 3, 4, Letter 4, Festival 2, 3, 4; Band 1, 2, 3, 4,
Letter 4, Festival 2, 3, 4; Spanish Club 3, 4.



ROD VON KROG Boone, Iowa
Homeroom Officer, Vice Pres. 4; "M" Club 4;
Football 4; Basketball 4; Track 4; Activities at
Boone—Mixed Chorus 2; Glee Club 2; Plays 2;
Football 1, 2, 3; Basketball 1, 2, 3; Track 1;
Tennis.

JERRY WALTEMEYER Albion
Vocational 4.



GENE WARD Bemidji, Minn.
Church League 3.

MARTHA LUCILLE WARD Timber
Creek #1
Y-Teens 1, 2, Sgt.-at-Arms 1, Vice Pres. 2; GRA
2, 3, 4; Pep Club 2, 3, 4; Church League 1, 2, 3;
Usher 4; Homeroom Sec.-Treas 3; Masque and
Dagger 3, 4; Plays 1, 3, 4, Play Festival 3; GY
3, 4, Cabinet 4; Spanish Club 3, 4, Vice Pres. 3;
4-H Club 1, 2, 3, 4, Pres. 3, Vice Pres. 2, His-
torian 1.



GORDON WEATHERLY Reinbeck, Ia.
Hi-Y 4; Vocational 4.

TERRY WEHRMAN Franklin
Church League 1, 2, 4; Masque and Dagger 4; Plays
4; Hi-Y 1, 2, 3, 4; Football 2; Golf 2; Jets 4; Intra-
murals 3, 4.



DONNA JEAN WHITE

Anson

Y-Teens 1, 2; Glee Club 1, 2, 3; GRA 2; Pep Club 2, 3; Masque and Dagger 3; GY 3, 4; Art Club 2; Vocational 4.

JAMES EDWARD WHITE

Aaron Palmer

Church League 3; Masque and Dagger 3; Plays 3; Hi-Y 1, 2, 3; Football 1; Jets 4; Intramurals 3, 4.



BEVERLY WILCOX

La Moille

Y-Teens 2; Mixed Chorus 1, 3, 4, Letter 4, Festival 3; Glee Club 1, 2, 4, Pres. 2; GRA 3, 4, Cabinet 4, Letter 3; Pep Club 2, 3, 4, Treas. 4; Church League 2, 3, 4; Usher 4; Student Senate 2; Plays 3; Class Pres. 1; GY 3, 4; Music Groups 1; Band 1; Scholarship Society 3, 4; Pebbles Staff—Advertising Manager 4.

DAVID KEITH WILDUNG

Franklin

Homeroom Vice Pres. 4; Band 1, 2, 3, 4, Letter 4; "M" Club 3, 4; Basketball 1, 2, 3, 4, Letter 1, 3, 4; Track 3; Cross Country 2.



LEROY WILLIM

Anson

Mixed Chorus 3, 4, Sec.-Treas. 4, Letter 4; Homeroom Officer 1, 4, Pres. 1, Vice Pres. 4; Student Senate 1; Masque and Dagger 3, 4, Vice Pres. 4; Plays 3, 4; Class Officer 1; Music Festival 3, 4; Hi-Y 2, 3, 4; Football 1; Basketball 1; Pebbles Staff—Page Editor 4; Spanish Club 4; Intramurals 3, 4; Drake Play Festival 3; Outstanding Actor Award 3; Journalism Workshop 3.

LORETTA AMELIA WILSON

Anson

Vocational 4.



JEROME ALPINER WINSTON

Rogers

Homeroom Vice Pres. 1; Student Senate 1; Masque and Dagger 3, 4; Oratorical Contest 3; Plays 3, 4; Orchestra 3, 4, Letter 4, Festival 2, 3, 4; Band 1, 2, 3, 4, Letter 3, Festival 2, 3, 4; Football Band 1, 3, 4; Basketball Band 3, 4; Scholarship Society 3, 4; Hi-Y 1, 2, 3, 4, Vice Pres. 2; Pebbles Staff—Managing Editor 4; Hi-Y Conference 2; Spanish Club 4; Jets 4; Boys' State 3.

MADELINE E. WOLFE

Rogers

Y-Teens 1, 2; GRA 2, 3, 4; Pep Club 1, 2, 3, 4; Church League 1, 2, 3, 4; Usher 4; Homeroom Officer 1, 3, Vice Pres. 1, Sec. 3; Student Senate 2; Masque and Dagger 3, 4; Plays 3; Class Pres. 2; GY 3, 4, Cabinet 4; Y-Teen Conference 1, 2; Scholarship Society 3, 4; State Basketball Queen Contest 2; Homecoming Queen 4.



KENT WOODS

Garwin, Ia.

Vocational 4.

STANLEY WOOSTER

Arnold

"M" Club 4; Hi-Y 1, 2, 3, 4; Football 1, 2, 4; Basketball 1, Letter 1; Track 1, 3, 4, Letter 4; Pebbles Staff—Circulation Manager 4; Baseball 3, 4, Letter 4; Church League 4.



BURRIS A. WORKMAN

Franklin

Church League 3, 4; Homeroom Officer 1, 2, 4, Pres. 1, 4, Vice Pres. 2; Student Senate 1, 2, 4, Pres. 4; Masque and Dagger 4; Plays 4; Class Pres. 3; "M" Club 2, 3, 4, Vice Pres. 4; Hi-Y 1, 2, 3, 4, Pres. 1, Sec. 4; Football 1, 2, 3, Letter 1, 3; Basketball 1, 2, Letter 1; Track 1, 2, 3, 4, Letter 1, 2, 3, 4; Intramurals 3, 4.

DEAN LAVERNE WORRELL

Gardena, California

Football 2, 3, 4; Basketball 1; Track 2; Softball 1; Varsity Club 2.



NANCY LEE YEAGER

Franklin

Y-Teens 1, 2; GRA 2, 3; Pep Club 1; Church League 1, 2, 3, 4; GY 3, 4; Scholarship Society 3, 4; Spanish Club 3, 4.

FRED ENOS

Marshall, Michigan

Activities at Marshall, Michigan — Football Pep Band 1; Basketball 1; Baseball 1.



SENIOR CLASS OFFICERS

From left to right are Jerry Downing, Secretary-Treasurer; John Dickkut, President; Nile Brennecke, Vice President; Bill Vana, Advisor.

Senior Class Project

The Seniors of 1958 have worked hard and steadily to raise funds for their class project. Our first job was to sell stationery with a picture of the school on it. This netted a profit of about \$81.00.

Our second activity was sponsoring bake sales. The class was divided into sections and each section was in charge of two sales. These were held on the last Saturday of each month.

Another activity was selling popcorn at the home basketball games. This was popped during the sixth period on the Friday afternoon before the game by volunteers or any other "hungry" helpers.

All in all this has been a very profitable year for everyone.



President John Dickkut distributes school stationery to fellow workers Kaylene Gallentine and LeRoy Willim.

Senior Highlights



Remember Soph. Tests —



— And Pep Skits?



BOOM!

Ho! Hum! All for love!



Muderclassmen





JUNIOR CLASS OFFICERS

From left to right: Jerry Peek, President; Joanne Cook, Secretary-Treasurer; Ev Cochrane, Advisor; Larry St. John, Vice President.

C-3

Front row, from left to right: Judy Bogard, Caroline Bru, Harriet Beaty, Karen Abel, Leni Manning, Sally Berger, Margaret Backoff, Carmen Bowers, Judy Baily. Second row: Larry Beck, Dianna Buchwald, Edna Aman, Robert Bibb, Nancy Hawley, Susan Augustine, Joan Balvanz, Shirley Barker. Third row: George Akins, Norman Achtemeier, Norman Barker, Gene Buhrow, Chuck Badgley, Bernie Brown, Craig Carlson, Sybil Bailey. Fourth row: Bob Butcher, Robert Bruggeman, Clarence Albers, Glenn Brockett, Dennis Brooks, Jon Boles, Steve Andrews, Jim Baily, Leslie Bennett.





C-4

Front row, left to right: Ruth Coil, Jill Collins, Donna Ferguson, Joan Donaldson, Linda Carothers, Glenda Fisher, Joanne Cook, Brucanna Cook, Jane Wilkinson. *Second row:* Charlotte Frisell, Edna Johnson, Sharon Dougan, Carol Corwin, Judy Curley, Arvilla Diller, Catherine Diller, Anne Collison, Sharon Coulter, Celia Forbes. *Third row:* Lynn Cunningham, Jackie Clark, Roger Dent, Dick Clouss, Allen Ewalt, Dan Drury, Richard Faulkner, John Detrich, Lee Egleston. *Fourth row:* Richard Wharton, Dave Druker, James Cormicle, Darrell Foreman, Dave Evans, Dick Devick, Gene Collins, Carl D. Farr.

C-6

First row, left to right: Barbara Judge, Carol Hulsizer, Gloria Giannetto, Linda Gummert, Sherry Hoskins, Judy Hager, Mildred Gustafson, Dixie Johnson. *Second row:* Wayne Jones, Bette Long, Joyce Hills, Carolyn Jessen, Karen Harris, Janet Holcomb, Roberta Irvine, Jim Gifford. *Third row:* Jeanette Gibson, Beverley Adkins, Sherrill Hamilton, Sally Garland, Skip Selvig, Jerald Gummert, Jim Irvine, Richard Hobson. *Fourth row:* Wayne Filloon, Paul Kepple, Larry Hall, Ronnie Hawn, Dave Hansen, Jerry Harper, Terry Hilleman, Ernie Green.





C-8

Front row, left to right: Ruth Anne Lee, Beatrice Moore, Karen Kerr, Mary Burns, Ellen Medhus, Jeannine Loros. *Second row:* Deanne Lawthers, Audrey Kolbe, Marcia Kothenbeutel, Virginia Moler, Margaret Mishler, Judi Harvey. *Third row:* Tom Mitchell, David Mendenhall, Larry Middaugh, Brice Lincoln, Larry Lord, Charles Lamoreaux. *Fourth row:* Dennis Lynch, Richard Meling, Mike Marble, Kent Loney, Kenneth Lamb.

C-9

Front row, left to right: Judy Noid, Myrna Niederhauser, Carlene Nelson, Beverly Paxson, Roberta Morris, Janet Morrison. *Second row:* James Parsons, Carolyn Pearson, Fonda Mae Phillips, Margaret Nielsen, Pauline Perry. *Third row:* John Perry, Darrell Pettis, Ronnie Navara, Roger Norder, Thomas Nash, Barbara Oberstein. *Fourth row:* Dale Nichols, Russell Morrison, Bob Moore, Duayne Newhard, Paul Perry, Dennis Paul, Larry Phipps.





Cafeteria-South

Front row, left to right: Claudine Thompson, Nancy Van Pelt, Norma Watkiss, Carol Winston, Bev Woodley, Mary Wehrman, Jeannie Stubbs, Diana Tressler, Donna Wilcox, Audrey Aman. *Second row:* Kay Wilcox, Susan Wolfe, Nicki Wilson, Connie White, Karen Swartz, Le Anne Tasler, Patsy Stotts, Marilyn Treiber, Margaret Wilson, Elaine Tweed, Billy Wooster. *Third row:* Gary Wall, Gary Gould, Ronald Wheeler, John Wells, Rodger Watson, Ronald Wooster, Charles Warnhoff, Herbert Wilson, Jerry Wheeler.

Cafeteria-North

Front row, left to right: Marta Stensvaag, Margaret Ralf, Roberta Findorff, Jo Ann Sleege, Virginia Redden, Margaret Rayburn, Pat Dunsmoor, Larry Randall. *Second row:* Rachel Serfoss, Betty Jean Slifer, Thayis Pugh, Nancy Rice, Sandy Specht, Sandy Smith, Judy Schulz, Jim Scovill. *Third row:* Sandra Robertson, Barbara Stackhouse, Diana Castell, Jim Short, Jimmy Speas, Jim Speas, Ted Smith, Ed Shutt, Lynn Prochaska. *Fourth row:* Allen Seffinga, Jim Ray, Dean Worrell, Bill Smith, Gary Rieger, Larry St. John, Bob Riggins, Dick Stevens, Ken Rowe.





Band

Front row, left to right: Janet McQuiston, Carolyn Joy Payne, Connie Kelso, Nancy Gronwoldt, Ardelle McCrary, Mary Turner, Sammy Conte, Barbara Johnson, Melanie Helm, Suzanne Buchanan. *Second row:* Pat Nodland, Sandie Howell, Judy Eige, Karen Western, Martha Whitcombe, Lisa Smith, Deanna Smith, Judy Stone, Jerry Robinett. *Third row:* Jim Hatfield, Dennis Severson, Ted Williams, Gary Jacobson, George Coffin, Le Roy Doggett, David Whaley, Craig Henderson, Wayne Helfer. *Fourth row:* Pete Jacobson, Jim Blue, Gil Harris, Don Wiltse, Pete Schirra, Tim Walsh, Don Hickmon, Jerry Peek, Stanley Reid, Allen Harder.

Twins at M.H.S.

From left to right: Blair Hawn, Blaine Hawn, Paul Perry, Pauline Perry, Gilbert Harris, Karen Harris, Jim Bailey, Judith Bailey, Ronald Galloway, Robert Galloway.





SOPHOMORE CLASS OFFICERS

Front row, left to right: Larry Gage, Vice President; Tom Evans, Sponsor; Karen Minner, Secretary-Treasurer; Larry Miller, President.

A-O

Front row, left to right: Robert Abel, Margaret Burns, Connie Buchwald, Judy Anson, Dolores Case, Helen Shelton, Judy Carson, Geri Brooks. *Second row:* Joyce Bulanek, Barbara Bailey, Elizabeth Austin, Gaile Betts, Joanne Mersman, Nancy Allen, Sharon Burnham, Rod Bruce, Gary Brucklacker. *Third row:* David Anderson, Eugene Bear, Jim Burnes, Harry Black, Dwayne Bryngelson, Dennis Brindle, Robert Cope, Bob Ball. *Fourth row:* Dave Berg, Don Alexander, Bob Briggs, Richard Botts, Gordon Burke, Gary Bolar, Bob Carson, Karl Brennecke.





A-2

Front row, left to right: Rosemarie Connley, Colleen Dutton, Martha Coil, Gwendolyn Clark, Mary Close. *Second row:* Becky Dunham, Eleanor Draegert, Nancy Determan, Sharon Coleman, Marilyn Culp, Sandra Emeis. *Third row:* Lloyd Eurom, Dave Ennis, Jim Elledge, Robert Diggins, Stephen Coon, Jim Cribbs, Ronnie Dunham, Larry Curson. *Fourth row:* Gene Davenport, Craig Erwin, Lanny Cowell, Paul Eker, Dave Cole, Jim Crowther, Larry Dawson, Ron Eichorn.

A-4

Front row, left to right: Larry Fritz, Barbara Gillette, Judy Formanek, Kookie Cluster, Lea Hamilton, Linda Faulkner, Shirley Finch, Charlotte Fleming, Sharon Gibson. *Second row:* Gary Harris, Eileen Hall, Diane Bryant, Linda Farber, Janice Fistler, Jane Biggs, Joan Giannetto, Pat Grant, Ellen Evertsen. *Third row:* Glenda Gooding, Janet Flower, Gary Ferriss, Roger Ferguson, Bob Harland, Dave Foraker, Tom Garber, Ronald Galloway, William Hamilton, David Lundberg. *Fourth row:* Jim Harrison, Larry Hogstrand, Donald Ewalt, Bob George, Bruce Williams, Dick Hall, Russ Franke, Robert Gooding, Alan Garland, Glenn Gall, Robert Galloway, Larry Gage.





A-5

First row, left to right: Karla Kyhnn, Marlys Lampman, Pamela Lackey, Bonnie Hauser, Jeanette Hoffman, Sharon Kimberlin, Harold Healy. *Second row:* Linda Heuer, Linda Hauser, Edla Isaacson, Mary Jo Harvey, Charlene Hilsabeck, Sharon Knox, Kris Kroger, Sharon La Plant. *Third row:* John Johnson, Gerald Hunt Jr., Blaine Hawn, Loren Huffaker, Gerald Koscielski, John Hauser, Roger Hinshaw, Blair Hawn, Mickey Jeffries, Mike Jerome.

B-2

Front row, left to right: Barb Meling, Janet McCarthy, Christy Merrill, Pam Mathis, Sandra Mann, Zelda Matney, Gerald McHenry. *Second row:* Mary Bernard, Sharon McFarland, Joyce Miller, Karen Malfeld, Charlene Lindsey, Linda Mallicoat, Mary Mercury, Marlene Lynch, Duane Miller. *Third row:* Virgil Larson, Kent Masmarr, Larry Miller, Ronald Long, Tim Lowe, John Miller, Michael Mendenhall. *Fourth row:* Eddie Locker, Scott McLeod, Dennie Maulsby, Gary Lukehart, Bill Mellows, Douglas McKay, Larry Mayer, Richard Lifer.





C-10

Front row, left to right: Janet Moore, Linda Phillips, Jane Neff, Sharon Olsen, Nancy Ream, Sandra Nelson, Linda Replogle, Lynn Miller. *Second row:* Barbara Mornberg, Sandra Peterson, Linda Rhine, Susan Reynolds, Nancy Neve, Nannette Norris, Gary Opperman. *Third row:* Mary Ross, Karen Minner, Lilla Niederhauser, Karen Olson, Joyce Roberts, Connie Moore, Audrey Needham, Alan Rasmussen. *Fourth row:* Dennis Ritland, Mick Murray, Mike Petersohn, Wayne Paul, John Niederhauser, Keith Morgan, Duane Owen, Steve Miller.

C-11

Front row, left to right: Gary Steinbach, Shirley Stanley, Virginia Springer, Marilyn Schroeder, Margaret Ruopp, Dorothy Smith, Sidnee Svec, Merle Royce. *Second row:* Mary Lou Sanders, Pat Stonewall, Chris Snyder, Barbara Squire, Karen Stubbs, Jennora Taft, Mary Snyder. *Third row:* Sandra Swearingen, Judi Short, Ed Saulvester, Marie Slifer, Bill Scheffert, Craig Spencer, Lyle Russell. *Fourth row:* Gary Stowe, Jim Shimek, Darrol Starn, Kurt Seberg, David Sellers, James Samo, Chuck Snyder.





S.R.A.-East

Front row, left to right: Marilyn Faust, Kathy Pegg, Karen Jones, Larry Huisman, Barbara Hemp-hill, Karen Noel, Richard Johannsen, Bucky Gazaway. *Second row:* Linda Williams, Joan Daven-port, Jim Collins, Judy Button, Nancy Roeder, Susan McMurray, Jerry Oak, Lynn McCord. *Third row:* Keith Avise, Steve Willard, Greg Roth, Jim Smith, David Scheiding, Dick Noid, Carol Maytag, Bob Johannsen. *Fourth row:* Dixie Hilleman, Gleneta Miller, Linda Perrin, Carolyn White, Garnet Lininger, Anita Smith, Susan Day, Mary Bachman, Sandra Felper. *Fifth row:* Don Miller, Dave Norland, Kenneth Burnett, John Noid, John Phillips, Tim Carter, Sim Beaty, Dave Lawrence.

S.R.A.-West

Front row, left to right: Linda Wood, Judie Walsh, Patty Thompson, Judith Wilson, Bonnie Tweed, Charlene Worsfold, Jeanne Thornton, Carilyn Westman, Joan Willia. *Second row:* Louisa Young, Paulette Warnell, Gloria Mills, Beverly Zednichek, Carol Lathrop, Mary Whetstine, Jane Young, Sharon Waddell, Patty Thomas, Terry Willson. *Third row:* Mike Winter, James Wedgwood, Milton Troehler, Dennis Zednichek, Gerald Wolfe, Ronnie Zwemke, Kenneth Williams, Ronald Tow, Raymond Jenkins. *Fourth row:* Dennis Vajgrt, Tom Weaver, David Ellis, Bob Zimmer-man, Danny White, John Weiny, Merle Wallen, Ronnie Thorp, Larry Williams, Mike Yordy.





NEW STUDENTS

These new students entered M. H. S. after September 18, 1957.

Left:

Georgia Speas, C9
Pat Williamson, C8

Below:

Margaret Fleming, C9
Clarence Shepard, C11

NOT PICTURED

Students who were absent on September 17 and 18 when homeroom pictures were taken.

Sandra Butler, Band
Bob Bruggeman, C3
Dixie Elliott, A2
Robert Eurom, C4
Pamela Long, C8
Floyd Love, C3
LaVonne Sanders, Cafe. North
Larry Vint, Cafe. South
Allen Vodochodsky, SRA West
Anne White, SRA West
Jane Young, SRA West
Gary Brucklacker, A0
Arvilla Diller, C4
Robert Gooding, A4
Donnie Williams, A4



FACULTY TEA

Girls' Home Economics class gave a tea for the teachers on December 19, 1957.

Faculty





MR. J. C. HOGLAN
Superintendent of Schools



Board of Education

Back row, left to right: William Doll, George W. Short, J. C. Hoglan, Robert D. Wheeler, Dr. Earl Keyser. Front row: James H. Boyd, Mrs. John Noid, President, Dr. J. P. Nessel. Not in the picture is Mr. George Williams.



Secondary-school youth are sometimes told that student days are best of all. This may or may not be true, depending upon the individual and his sense of values. The success of each period of life is somewhat determined by the preparation and activity of the preceding interval. May your future be assured by your good works in the present.

B. R. MILLER
Principal

MR. RAY LINEHAN
Assistant Principal

B.A. and M.A., University of Iowa, graduate work, Drake University and University of Iowa. Mr. Linehan is assistant principal. His hobbies are reading, hunting, fishing, and athletics. Mr. Linehan is the father of one son.





MISS ANNA KELLY
School Librarian

B.A., University of Iowa; B.S. in L.S., George Peabody College.

Miss Kelly is head librarian. Her hobbies are reading and sewing. She sponsors assistant librarians.

MR. EARL MOORE
Director of Counseling and Guidance

B.A., State University of Iowa; M.A., University of Nebraska; working on Ed. D., University of Nebraska.

Mr. Moore is director of guidance and counseling at MHS and JHS. His hobbies are family activities, reading, and sports. He is the father of five.



MISS VIOLA UFER
Registrar

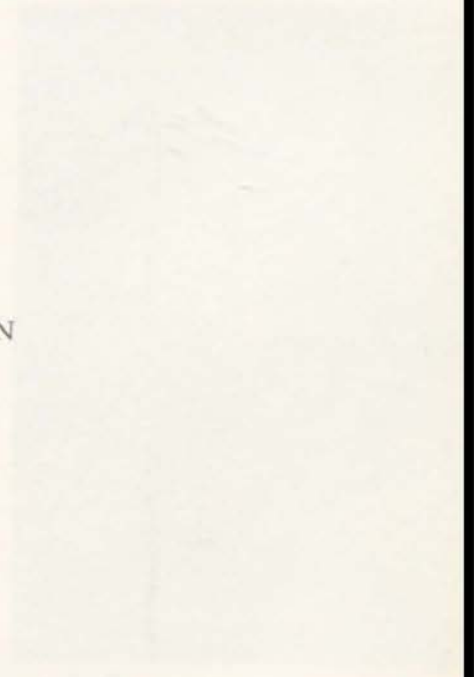
B. Ed., State Teachers College; graduate of Oshkosh Business College.

Miss Ufer is registrar and the girls' attendance counselor at senior high.

MARILYN WAGAMAN
Secretary to Mr. Hoglan



MARGARET WAGAMAN
Secretary to Mr. Miller



A typical scene in the office shortly after tardy bell is Mr. Linehan, Margaret Wagaman, and Miss Ufer writing excuses and admits.





MR. ARMON ADAMS

B.S. and M.A., Northeast Missouri State Teachers College. Mr. Adams teaches band at MHS and JHS. His hobbies are photography and electric trains. He is the father of two boys.

MRS. PATRICIA BACINO

B.A., State University of Iowa. Mrs. Bacino teaches English. Her hobbies are reading, golf, and swimming. She is the mother of a girl and a boy.



MR. JOHN BARRIGAR

B.A., Iowa State Teachers College; M.A., Colorado State College; graduate work, St. Louis University. Mr. Barrigar teaches physics, electricity, and radio. His hobbies are amateur radio, traveling, dancing, bowling, and camping. He is the father of two girls.

MISS VIRGINIA BAXENDALE

B.A., Simpson College; graduate work, University of Colorado. Miss Baxendale teaches journalism and English. She is PEBBLES and POST SCRIPT advisor. Her hobbies are reading, writing, and music.



MR. ROY BORWICK

B.A., Iowa State Teachers College; M.A., Colorado State College of Education. He teaches business principles and personal typing. He is a counselor. His hobbies are hunting, fishing, and tennis. He is the father of one boy.

MISS FLORENCE BOTEN

B.S., Central Missouri State College; M.A., University of Missouri. Miss Boten teaches western civilization, psychology, and world history. She is a counselor. One of her outside interests is the Mental Health Center.





MISS HELEN BOTEN

B.S., Central Missouri State College; M.A., University of Missouri. Miss Boten teaches civics and United States and world history.

MR. FRANCIS BURNHAM

B.S. and M.S., Iowa State College. Mr. Burnham is director of vocational and adult education. His hobbies are collecting U. S. and U. N. stamps and Lincoln pennies, singing in the church choir, and belonging to the Indian Guides. He is the father of two, a boy and a girl.



MISS MARGARET BYAL

B.S., Drake University. Miss Byal teaches business typing. She is co-sponsor of Pep Club. Her hobbies are knitting and sewing.

MR. LLOYD CHRISTENSEN

B.S., Iowa State Teachers College; M.S., Colorado State College; graduate work, State University of Iowa and Iowa State Teachers College. He teaches drivers education in class and behind-the-wheel. He is the father of two, a boy and a girl.



MR. RICHARD CLAYPOOL

B.A., Iowa State Teachers College. Mr. Claypool teaches metals and behind-the-wheel drivers education. His hobbies are driving, building miniature scale model buildings, woodworking, and building furniture. He is the father of one son.

MR. DONALD CLAYTON

B.A. and graduate work, Iowa State Teachers College. He teaches typing and behind-the-wheel drivers education. His hobbies are playing baseball, watching television and athletic contests. He is a graduate of MHS.





MR. EVERETT COCHRANE

B.A., State University of Iowa; 21 hours toward M.A. Mr. Cochrane teaches physical education at MHS and JHS. He is head basketball coach and assistant coach in other sports. His hobby is sports. He is the father of one boy.

MR. LEONARD COLE

B.S.E., M.S.E., Drake University. Mr. Cole teaches marriage and family life, sociology, and biology. During the summer he manages the Municipal Swimming Pool. He is the father of three boys.



MR. J. C. COLLINS

B.S., Southwest Missouri State College; M.A., University of Missouri. Mr. Collins teaches high school bookkeeping and junior college accounting. He is extracurricular activities treasurer. He is the father of two sons.

MISS GRACE COOPER

B.A., Grinnell College; M.A., Columbia University. Miss Cooper teaches English. Her hobbies are travel, photography, and early Americana.



MISS MARION CORNWALL

B.A. and M.A., State University of Iowa. Miss Cornwall teaches algebra and mathematics in high school and junior college.

MR. D. DALE DAVIS

B.A., Westmar; M.S., State University of Iowa. Mr. Davis teaches JC chemistry and physics. He sponsors college activities. His hobby is gardening.





MR. KENNETH DEAN

B.E., Northern Illinois University. Mr. Dean teaches sociology and American history. He is assistant coach in football and basketball. He is head coach in cross country and track. His hobbies are sports and his home and family. He is the father of six, four boys and two girls.

MR. WARREN DICKINSON

B.A., Iowa State Teachers College; graduate work, Stout Institute, Colorado A and M, Iowa State College. Mr. Dickinson teaches high school mechanical drawing and junior college technical drawing. He is tennis coach. He is the father of two, a boy and a girl.



MRS. CAROL HOUGHTON DODD

B.A., Coe College. Mrs. Dodd teaches speech and dramatics. She is sponsor of Masque and Dagger and GY. She is co-sponsor of Pep Club. Her hobbies are cooking and traveling.

MR. THOMAS EVANS

B.S., University of Colorado. Mr. Evans teaches American history. He is MHS football coach and JC basketball coach. He sponsors the sophomore class and "M" Club. His hobbies are athletics, carpentry and photography. He is the father of three, two boys and a girl.



MR. DAVID FAGLE

B.A. and M.A., Iowa State College. Mr. Fagle teaches high school biology and junior college anatomy, physiology, microbiology, and zoology. His hobbies are fishing, hunting, and collecting biological material.

MR. AL J. FIENUP

B.S. and M.A., State University of Iowa. Mr. Fienup teaches physical education. He sponsors intramurals and Gym Club and Weight Training Club. His hobbies are hunting, fishing, and sports.





MR. FORREST FOWLER

B.M.E., Morningside College. Mr. Fowler teaches MHS orchestra. His hobbies are hunting and keeping up to date with all the new cars. He is the father of three, two boys and a girl.

MR. RAY FREDERICK

B.A. and M.A., University of Iowa. Mr. Frederick teaches art. His hobbies are painting and swimming. He is the father of two, one boy and a girl.



MR. LESLIE GRAHAM

B.A. and M.A., Iowa State Teachers College. Mr. Graham teaches algebra, geometry, and solid geometry. His hobbies are crafts.

MR. ARLEN HACKBARTH

B.A. and M.A., John Fletcher College, State University of Iowa. Mr. Hackbarth teaches JC history and American government. He is a counselor. His hobbies are farming and the Air Force Reserve.



MR. JAMES HANDORF

B.A., Iowa State Teachers College. Mr. Handorf teaches shorthand and secretarial practice. His hobbies are sports and traveling.

MISS AGNES HANSON

B.A., Iowa State Teachers College; M.A., Columbia University; additional graduate work, University of Iowa, University of Southern California, Wyoming University. Miss Hanson teaches JC communication skills and advanced speech. She sponsors JC speech activities.



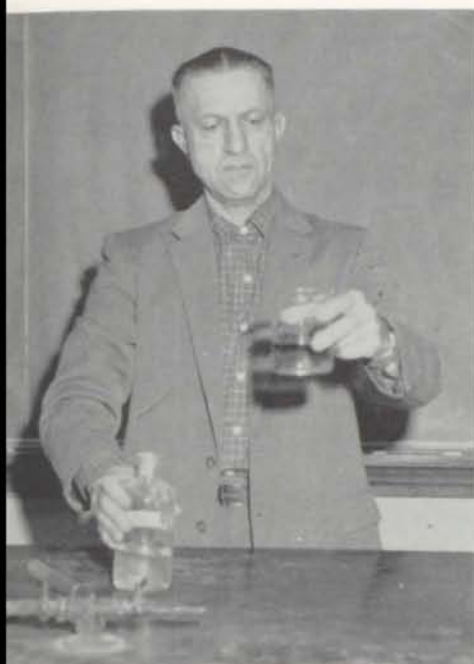


MISS AUDREY HAYES

B.A., Iowa State Teachers College. Miss Hayes teaches English and speech. Her hobbies are sewing, music, and cooking.

MR. DEAN HOUSEL

B.S., State University of Iowa. Mr. Housel teaches geometry and business arithmetic. He is assistant football and basketball coach. His hobby is hunting. He is the father of three, two boys and a girl.



MR. LEONARD KINGSBURY

B.A., State University of Iowa; M.Ed., University of Colorado. Mr. Kingsbury teaches chemistry and mathematics. His outside interests include Army Reserve activities.

MISS HELEN KNOLL

B.A., State University of Iowa. Miss Knoll teaches English. Her hobbies are reading, travel, and foreign languages.



MRS. ADA LEWIS

B.S., Northeast Missouri State Teachers College. Mrs. Lewis teaches girls' physical education. She sponsors GRA and junior class projects. Her hobbies are bowling, tennis, and square dancing. She is the mother of one boy.

MR. ROBERT McAULEY

B.F.A., Drake University. Mr. McAuley teaches English. His hobbies are reading and fishing. He is the father of two boys.





MR. STEPHEN MELVIN

B.S. and M.A., Northeast Missouri State Teachers College. Mr. Melvin teaches MHS, JC, and Anson Junior High vocal music. His hobbies are reading, records, dance band, and music in general.

MR. OLAF ODEGAARD

B.A., Luther College; M.A., State University of Iowa. Mr. Odegard teaches Spanish and English. His hobby is instrumental music.



MISS SHIRLEY PATTERSON

B.S., Iowa State College. Miss Patterson teaches homemaking. Her hobbies are sewing, cooking, and riding horseback.

MISS LORABEL RICHARDSON

B.A., Grinnell College. Miss Richardson teaches English.



MISS ELEANOR SHEAR

B.A., Iowa State Teachers College. Miss Shear teaches Latin and English.

MR. BILL VANA

B.S., State University of Iowa. Mr. Vana teaches physiology and biology. He is senior class sponsor, head baseball coach, golf coach, sophomore basketball coach, and assistant football coach. His hobbies are hunting and fishing.





MR. DONALD WILSON

B.S.C., State University of Iowa. Mr. Wilson teaches distributive practice. His hobbies are golf, fishing, bowling, and camping. He is the father of three, two boys and a girl.

MISS RUTH ZORN

B.A. and M.A., State University of Iowa; graduate work, State University of Iowa; University of Chicago, and Columbia University. Miss Zorn teaches English. Her hobby is art.



THEY COOK OUR FOOD



Mrs. Marie Gould and Mrs. Helen Beckam are baking pies.



Mrs. Roberta Cribbs Director of Cafeteria and Mrs. Leila Severance prepare sandwiches.

Mrs. Dorothy Oak is ready to prepare pudding, while Mrs. Ardath Roberts is mixing meat loaf.

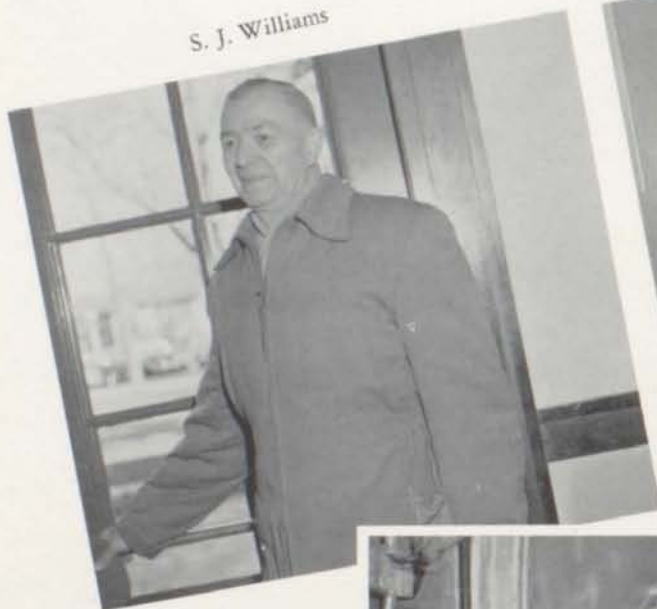


THEY CARE FOR OUR SCHOOL

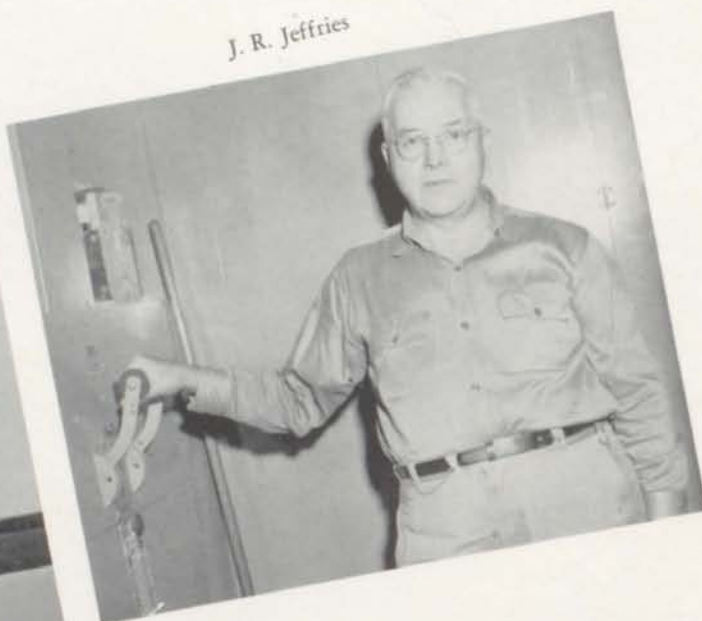


Carrie McClain — K. L. Pennell

S. J. Williams



J. R. Jeffries



Glenn A. Boggs
F. J. Lutter





Student Senate Officers: Burris Workman, President; Karen Baker, Secretary; David Hemphill, Vice President.

Student Senate is a school organization sponsored by Mr. Miller. Its members include homeroom presidents, presidents of "Y" organizations and of other school groups. The Student Senate regulates the biggest school event of the year, Homecoming.

Student Senate

STUDENT SENATE MEMBERS—*First row:* Jane Lynch, Kay Meldahl, Jeannie Cook, Sandra Glans, Maris Collins, Burris Workman, John Dickkut. *Second row:* Charles Eckles, Hal Loney, Margaret Mishler, Margaret Nielsen, Marilyn Schroeder, Kathy Pegg, Betty Pritchett, Mary Andrews. *Third row:* Gary Thurston, Craig Carlson, Ralph Finch, Pat Barker, Nile Brennecke, Dick Horton, Wayne Paul, Roger Hinshaw, Ron Zwemke. *Fourth row:* Sandy Smith, Lisa Smith, Mike Petersohn, Jerry Wheeler, Jerry Peek, Lanny Cowell, Larry Gage, Karl Brennecke, Bill Scheffert. *Fifth row:* Joan Robertson, Roberta Irvine, Joanne Cook, Karen Baker, Mary Pattie.





MHS USHERS—*First row:* Linda Momberg, Sharon McKibbin, Marcia Davenport, Kaylene Gallentine, Linda Lamer, Beverly Wilcox, Sharon Miller, Joan Robertson, Mary Gail Noid, Donna Burgess, Arlene Tychsen. *Second row:* Sharon Olson, Mary Pattie, Alice Bradbury, Donna Fugate, Sandra Saccaro, Glenda Eggleston, Mimi Wolfe, Penny Proctor, Janice Harvey, Ruth Brenner, Karen Baker. *Third row:* Kay Meldahl, Sally Dickerson, Janet Rogers, Marilyn Reisinger, Deanne Dobson, Bonnie Evans, Ann McGregor.

Ushers



The Ushers, a division of Pep Club, keep the spectators off the Coliseum floor and add lots of color to home basketball and football games.



JANE LYNCH
Head Usher



PEP CLUB OFFICERS: Janet Rogers, 'Cat Tags; Bev Wilcox, Treasurer; Joan Robertson, President; Margaret Nielson, Vice President; Margaret Mishler, Secretary.

Pep Club's purpose is to support the Bobcats and to encourage other students to do so. The members also turn out the popular 'Cat tags before home games to rouse the student body's spirit.

Pep Club

SENIORS

First row: Karen Kralik, Marilyn Kneeland, Sherry Ellis, Verna Shaw, Darlene Kruse, Patricia Noid, Joan Curson, Janice Hobson, Marilyn Moore. *Second row:* Sandra Bolle, Sandra Olson, Barbara Doll, Pat McCord, Betty Pritchett, Jean Peak, Susan Smith, Ann Freese, Avonelle Smith, Roberta Hodgdon, Karen Hilleman.





SOPHOMORES

First row: Bonnie Hauser, Sidney Svec, Sharon McFarland, Sharon Gibson, Marilyn Schroeder, Virginia Springer, Judy Carson, Jeannette Hoffman, Sharon Olsen, Sharon Kimberlin, Nancy Ream, Marilyn Faust, Linda Phillips. *Second row:* Dixie Elliot, Mary Jo Harvey, Janet Flower, Linda Williams, Kris Kroger, Patty Thomas, Kookie Cluster, Ellen Evertson, Susan McMurray, Jerry Oak, Marlene Lynch, Mary Bachman, Lee Hamilton. *Third row:* Karen Jones, Edla Mae Issacson, Barbara Hemphill, Karen Noel, Karen Minner, Kathy Pegg, Mary Whetstine, Linda Perrin, Susan Reynolds, Nancy Neve, Lilla Niederhauser, Chris Snyder, Carol Maytag, Janice Fistler, Judy Button, Pam Lackey, Lynn Miller, Connie Moore, Joyce Miller. *Fourth row:* Linda Heuer, Elizabeth Austin, Dorothy Smith, Sandra Peterson, Joann Giannetto, Karen Olson, Helen Shelton, Margaret Roupp, Barbara Gillette, Nan Norris, Chris Merrill, Dixie Hilleman, Gleneta Miller, Linda Wood, Maryls Lampman, Rosemarie Connley, Judy Formanek, Sandra Felper. *Fifth row:* Carolyn White, Garnet Lininger, Sharon LaPlant, Charlene Lindsay, Judy Short, Judy Welsh, Patty Stonewall, Mary Close, Barbara Squire, Diane Bryant, Sharon Waddell, Sandy Emeis, Joyce Roberts, Anita Smith, Susan Day, Eileen Hall, Karen Malfeld, Sandra Mann, Sharon Coleman, Beverly Zednichek.

Pep Club

JUNIORS

First row: Virginia Redden, Carol Winston, Connie White, Mary Wehrman, Jami Wilkinson, Judy Stone, Pam Long, Roberta Morris, Barbara Judge, Sandra Specht, Ellen Medhus, Glenda Fisher, Jo Ann Sleege. *Second row:* Karen Abel, Joan Donaldson, Linda Carothers, Gloria Gianetto, Sherry Hoskins, Ardelle McCrary, Jeannine Loros, Sandra Smith, Nancy Hawley, Mildred Gustafson, Jeannette Gilson, Virginia Mohler, Beatrice Moore, Judy Curly. *Third row:* Carlene Nelson, Susan Wolfe, Margaret Rayburn, Judy Stone, Janet McQuiston, Judy Eige, Jane Biggs, Barbara Oberstein, Rachel Serfoss, Diana Tressler, Jean Stubbs, Donna Ferguson, Carol Hulsizer, Ann Collison, Susan Augustine, Sharon Coulter, Melanie Helm. *Fourth row:* Marta Stensvaag, Karen Swartz, Lisa Smith, Nancy Rice, Karen Western, Judy Bogard, Suzanne Buchanan, Nicki Wilson, Nancy Gronwaldt, Sybil Bailey, Harriet Beaty, Deanne Lawthers, Roberta Irvine, Sammy Conte, Martha Whitcombe, Sandy Robertson, Karen Harris, Deanna Smith, Barbara Johnson.





HI-Y OFFICERS—*First row:* Nile Brennecke, President; Larry Johnson, Sergeant-at-Arms. *Second row:* Ed Farber, Treasurer; Jerry Downing, Vice President. *Third row:* Burris Workman, Secretary; Don Hickman, Chaplain.

Senior Hi-Y is a club for senior and junior boys. It offers pleasant social surroundings to members and presents the Hi-Y Formal each spring as well as selling programs at home football and basketball games. Don Taylor and Homer Eckles act as the club's advisors.

Hi-Y

First row: Charles Eckles, Bob Bueghly, Mike Brimmer, Rod Von Krog, Darwin Meyer, David Thomas, David Anderson, John DeButts. *Second row:* Dick Horton, Hoot Niederhauser, Tim Merrill, Sonny Finch, Russ Betts, Chuck Badgley, Lynn Cunningham, Dennis Lynch. *Third row:* Larry Jacobson, Tom Stanley, Brian Garrington, Gary Thurston, Tom Benge, Larry Hall, Jerry Lokensgard, Don Stover, Seyman Krantman, Glenn Brockett.





First row: Terry Wehrman, David Drew, John Strever, Bob Bibb, Don Phillips, Herb Hoop.
Second row: Rodger Watson, Paul Koehler, Larry Johnson, Ron D'Orazio, Lonny Poland, Steve Andrews.
Third row: Allan Rudison, Bernie Brown, Gary Loney, Dick Rhiner, Doug Graham, David Druker.

Hi-Y

First row: Karl Rinehart, Dick Talmadge, Don Hickman, Larry Phipps, Larry Randall, Dick Stevens, Kenny Rowe, Larry Schmoranz, Pat Dyrland, Gary Jacobson.
Second row: Chuck Nelson, Jim Short, Bob Mason, Wayne Helfer, David Whaley, Paul Perry, Burris Workman, Jerry Winston, Herb Long, David Mendenhall.
Third row: Bob Button, Stan Wooster, Ronnie Wooster, Jim Blue, Jerry Downing, Gene Buhrow, Larry St. John, Jack Gooding, Dave Hanson, Gary Gould, John Dickkut, Gib Harris, LeRoy Willim, Pat Barker, Stan Reid, Craig Henderson, Ted Williams, Nile Brennecke.





G-Y OFFICERS—*Left to right:* Karen Baker, President; Sammy Conte, Vice President; Melanie Helm, Secretary; Deanne Dobson, Treasurer.

G-Y is a club sponsored by the YWCA for senior and junior girls. It provides wholesome social life at its regular Tuesday night meetings. Mrs. Ralph Dodd acts as advisor for the group. G-Y performs many community services and annually presents the "Snowball," one of the biggest events of the year.

G-Y

G-Y CABINET—*Seated, left to right:* Janet Rogers, Nancy Thomas, Mary Gail Noid, Maris Collins, Melanie Helm, Martha Ward. *Standing:* Deanne Dobson, Mimi Wolfe, Ruth Brenner, Karen Baker, Jane Lynch, Sammy Conte, Mary Pattie. *Absent when picture was taken:* Alice Bradbury.





First row: Janice Harvey, Kaylene Gallentine, Sally Dickerson, Sandy Glans, Sandra Saccaro, Joan Robertson, Penny Proctor, Jeannie Cook, Karen Kralik, Sarah Scheffert, Kay Meldahl. *Second row:* Ann McGregor, Patty Noid, Bev Wilcox, Linda Harrison, Alicia Strike, Sherry Ellis, Caroline Shaw, Sharon Ness, Sharon Olson, Joan Curson. *Third row:* Karen Hilleman, Ina Mae Middleton, Helen Donaldson, Arlene Tychsen, Zelda Dannen, Verna Shaw, Karen Purvis, Pat Catlin, Shirley Nelson, Joyce Ruddick, Sandra Spencer, Sondra Stanley.

9-2

First row: Janice Hobson, Mary Andrews, JoAnne Ritland, Sharon McKibben, Susan Smith, Ann Freese, Roberta Hodgdon, Sharon Miller, Glenda Eggleston. *Second row:* Joyce Diggins, Barbara Doll, Sandra Olson, Pat McCord, Jean Peak, Bonnie Evans, Marilyn Kneeland, Darlene Kruse. *Third row:* Peggy Brainerd, Donna Burgess, Beverly Thorn, Marcia Davenport, Sherrill Haley, Barbara Donaldson, Avonelle Smith, Betty Pritchett, Beverly Benson, Martha Moore, Maureen Gummert, Linda Lamer.





First row: Connie Kelso, Janice Alexander, Virginia Redden, Carol Winston, Mildred Gustafson, Margie Ralf, Pam Long. *Second row:* Alice Bradbury, Donna Fugate, Sharon Dougan, Barb Stackhouse, Barb Judge, Ellen Medhus, Sandra Specht, Connie White. *Third row:* Mary Turner, Brucanna Cook, Karen Harris, Ann Collison, Susan Augustine, Roberta Irvine, Lisa Smith, Sandy Brothers, Sonya Brothers, Shirley Peterson, Jane Biggs, Judy Harvey.

G-4

First row: Sandra Butler, Pat Nodland, Sandra Robertson, Judy Hager, Mary Wehrman, Sherry Hoskins, JoAnne Cook, Sandra Smith, Jami Wilkinson, Sybil Bailey, Judy Bailey. *Second row:* Sandra Howell, Carolyn Jessen, Donna Wilcox, Ardelle McCrary, Diana Tressler, Jean Stubbs, Kathy Giannetto, Fonda Phillips, Kay Wilcox, Linda Gummert, Elaine Tweed. *Third row:* Beverly Woodley, Deanne Lawthers, Judy Noid, Harriet Beaty, Judy Eige, Janet McQuiston, Karen Western, Judy Bogard, Judy Stone, Barbara Oberstein, Pauline Perry, Bette Long, Jill Collins, Linda Saunders, Nancy Rice.



10th Hi-Y, a sophomore club similar to Senior Hi-Y, is sponsored by the YMCA and holds regular meetings every Tuesday night.



10th HI-Y OFFICERS—*First row:* Bob Ball, Secretary; Wayne Paul, President; Jerry Kozielski, Sergeant-at-Arms. *Second row:* Mike Petersohn, Chaplain; Roger Hinshaw, Vice President; Jerry Hunt, Treasurer.

10th Hi-Y

First row: Jim Smith, John Gazaway, John Johnson, Mike Yordy, Rod Bruce, Larry Miller, Keith Avise, Gene Davenport. *Second row:* Larry Huisman, Alan Rasmussen, Richard Johannsen, James Cribbs, James Burnes, Tom Garber, Lynn McCord, Jim Elledge, Tom Weaver. *Third row:* Russ Franke, Tim Carter, David Norland, Chuck Snyder, Ron Zwemke, Dennis Vajgrt, Kurt Seberg, Alan Garland. *Fourth row:* Bill Mellows, Gary Bolar, David Cole, Gordon Burke, Ron Eichorn, Robert Johannson.





Y-Teens is sponsored by the YWCA for sophomore girls. The group is advised by Miss Juanita Doe.

10th Y-TEEN OFFICERS—*Left to right:* Ellen Evertson, Vice President; Nancy Ream, Secretary; Juanita Doe, Advisor; Bonnie Hauser, President; Barbara Gillette, Treasurer.

10th Y-Teens

First row: Sharon Knox, Sharon Burnham, Ann White, Judy Carson, Pam Mathis, Mary Whetstine, Linda Mallicoat, Jeannette Hoffman. *Second row:* Nancy Roeder, Joyce Roberts, Nan Norris, Marilyn Culp, Karen Stubbs, Diane Bryant, Karen Olson, Linda Farber. *Third row:* Carol Maytag, Glenda Gooding, Sandy Emeis, Sharon Waddell, Janice Fistler, Susan Day, Anita Smith.





First row: Linda Woods, Delores Case, Sidney Svec, Marilyn Faust, Judy Short, Nancy Allen, Judy Wilson. *Second row:* Judy Anson, Connie Moore, Sandra Peterson, Bonnie Tweed, Barbara Bailey, JoAnn Giannetto, Eileen Hall. *Third row:* Karen Jones, Karen Malfeld, Sandra Felper, Charlene Lindsey, Paulette Warnell, Beverly Zednichek, Beth Austin.

10th Y-Teens

First row: Jerry Oak, Laura Lee Hamilton, Linda Williams, Sharon Olson, Kathy Pegg, Susan Reynolds, Patty Thomas, Kookie Cluster, Nancy Neve. *Second row:* Marlene Lynch, Karen Noel, Linda Replogle, Gleneta Miller, Virginia Springer, Marilyn Schroeder, Linda Perrin, Margaret Ruopp, Helen Shelton, Susan McMurray, Linda Phillips. *Third row:* Lynn Miller, Kris Kroger, Karen Minner, Chris Snyder, Sharon LaPlant, Lilla Niederhauser, Dixie Hilleman, Garnet Lininger, Mary Bachman.





GRA, the Girls' Recreation Association, promotes participation of girls in various sports throughout the year, after which an award banquet is held with honors going to the winning teams. Mrs. Lewis acts as the club's sponsor.

GRA OFFICERS—*First row:* Sandy Glans, President; Melanie Helm, Historian. *Second row:* Margaret Nielsen, Vice President; Sandy Robertson, Secretary; Sharon Olson, Treasurer.

G.R.A.

First row: Sandy Glans, Peggy Brainerd, Ruth Brenner, Sandra Saccaro, Sharon McKibbin, Jeannie Cook. *Second row:* Penny Proctor, Janet Rogers, Sharon Olson, Ann McGregor, Mary Pattie, Deanne Dobson, Donna Fugate, Arlene Tychsen. *Third row:* Alice Bradbury, Beverly Wilcox, Sally Dickerson, Janice Hobson, Jean Peak, Bonnie Evans, Kay Meldahl, Jane Lynch. *Fourth row:* Kaylene Gallentine, Donna Burgess, Marcia Davenport, Darlene Kruse, Avonelle Smith, Janice Harvey, Sherry Ellis.





First row: Diana Tressler, Ardelle McCrary, Mildred Gustafson, Melanie Helm, Sammy Conte, Sherry Hoskins, Judy Hager, Mary Wehrman, Joanne Cook, Jami Wilkinson. *Second row:* Sandra Smith, Anne Collison, Margaret Mishler, Margaret Nielson, Sandra Robertson, Bev Woodley, Janet McQuiston, Sybil Bailey, Brucanna Cook. *Third row:* Suzanne Buchanan, Jeanette Gilson, Judy Eige, Karen Western, Judy Bogard, Susan Augustine, Carolyn Bru, Barbara Johnson. *Fourth row:* Pam Long, Roberta Irvine, Lisa Smith, Jean Stubbs, Deanna Smith, Martha Whitcombe, Karen Harris, Jeannine Loros.

G.R.A.

First row: Karen Noel, Sharon Kimberlin, Marilyn Schroeder, Margaret Ruopp, Sharon Olson, Barbara Hemphill, Linda Farber. *Second row:* Linda Williams, Dixie Hilleman, Chris Merrill, Sharon Burnham, Jeanette Hoffman, Patty Thomas, Susan Reynolds, Kookie Cluster. *Third row:* Karen Minner, Jerry Oak, Mary Bachman, Susan McMurray, Carol Maytag, Chris Snyder, Sharon Knox, Linda Perrin, Nancy Neve. *Fourth row:* Janice Fistler, Garnet Lininger, Gleneta Miller, Karen Malfeld, Carolyn White, Karen Olson, Ellen Evertson, Susan Day, Karen Stubbs, Kathy Pegg.





Bobbettes

The Bobbettes, a newly formed drill team, perform at half-time at home basketball games.

MEMBERS: Joanne Cook, Sandra Smith, Jeannie Cook, Melanie Helm, Karen Harris, Nancy Thomas, Mrs. Lewis—Director, Jean Stubbs, Sammy Conte, Sharon Coulter, Maris Collins, Jeannine Loros, Sandra Glans.

Mermaids

Mermaids is a selected group of swimmers who meet weekly at the "Y" pool. The members practice water ballet and the graceful perfection of each kind of swimming stroke.

MERMAID OFFICERS—*Standing:* Janet Hamann, Advisor. *Sitting:* Karen Harris, Vice President; Penny Proctor, President; Kookie Cluster, Secretary.



Janet Hamann, Penny Proctor, Karen Harris, Melanie Helm, Martha Whitcombe, Kookie Cluster, Nancy Neve, Susan Reynolds, Patty Thomas, Jeannie Cook, Deanna Smith, Jean Stubbs, Jeannine Loros, Mildred Gustafson, Glenda Fisher.





First row: Russell Morrison, Craig Henderson, Russ Betts, Rod Von Krog, David Hansen, John Dickkut, Glenda Eggleston, Gary Thurston, Karen Hilleman, Avonelle Smith, Donna Fugate, Jean Peak. *Second row:* Marilyn Kneeland, Karen Kralik, Judy Bogard, Suzanne Buchanan, Anita Smith, Kaylene Gallentine, Sharon McKibbin. *Third row:* Sandra Peterson, Sharon La Plant, Linda Phillips, Virginia Springer, Herb Hoop, Nancy Neve, Sharon Olsen, Karen Olson, Jean Stubbs, Sandra Smith, Karen Swartz, Betty Slifer.

Future Teachers of America

Gym Club

GYM CLUB MEMBERS—*Front row:* Al Fienup and Gerhard Butzlaff, Instructors. *Second row:* Alan Rasmussen, Len Schnathorst, George Perry, Larry Johnson, Gary McCormack, Pat Dyrland, Jim Hatfield. *Third row:* Danny White, Lyle Russell, George Akins, Bob Moore, Buddy Hunt, Larry Lukehart.





"M" Club is an organization open to all boys who have won a letter in any sport at Marshalltown. Tom Evans is the club's sponsor.

OFFICERS: Jerry Downing, Sergeant-at-Arms; Nile Brennecke, Secretary; Dick Rhiner, Treasurer; Pat Barker, President; Burris Workman, Vice President.

"M" Club

Left to right: Karl Rinehart, Dennis Paul, Stan Wooster, Richard Wharton, Bob Button, Larry St. John, Doug Graham, Pat Barker, Nile Brennecke, Dick Horton, Larry Johnson, David Anderson, Ron Wooster.





Left to right: Larry Hall, David Druker, Chuck Nelson, Bernie Brown, Dick Rhiner, Allan Rudison, Gary Loney, Hoot Niederhauser, Burris Workman, Bob Bibb, Jerry Downing.

Intramural Board of Control

The Intramural Board of Control schedules and supervises all intramural sports at Senior High. This year's program includes touch football, bowling, basketball, tennis, and volleyball.

BOARD MEMBERS—*Left to right:* David Anderson, Tom Benge, Charles Eckles, Chairman; David Hemphill, Merle Royce, Al Fienup, Sponsor; John Wells, Carl Farr, Norman Barker, George Coffin, Don Alexander, Richard Hobson, John Philips.





SPANISH CLUB OFFICERS—*First row:* Tim Merrill, Second Year, Vice President; Ina Mae Middleton, Second Year President; Jane Lynch, First Year Vice President. *Second row:* Janice Hobson, Second Year, Secretary; Penny Proctor, Committee Head; Martha Whitcombe, First Year, Secretary.

Spanish Club

SECOND YEAR SPANISH CLUB—*First row:* Kay Richeson, Arlene Tychsen, Ina Mae Middleton, Nancy Yeager. *Second row:* Karen Kralik, Janice Hobson, Mary Pattie, Deanne Dobson, Kay Meldahl. *Third row:* Marilyn Moore, Karen Hilleman, Bonnie Evans, Donna Fugate, Sharon McKibbin, Marilyn Kneeland. *Fourth row:* David Anderson, David Thomas, Jerry Winston.





FIRST YEAR SPANISH CLUB—*First row:* Janice Nash, Sally Dickerson, Penny Proctor, Tommy Mitchell, Carol Winston, Virginia Redden, David Druker, Jane Lynch. *Second row:* Ralph Finch, Dale Nichols, Fonda Phillips, Carolyn Payne, Barbara Oberstien, Jeanette Gilson, Martha Whitcombe, Sandra Specht, LeRoy Willim. *Third row:* Janet McQuiston, Judy Eige, Judy Bogard, Marta Stensvaag, Nicki Wilson, Barbara Stackhouse, Ruth Ann Lee, Mike Marble. *Fourth row:* Betty Slifer, Brucanna Cook, Susan Augustine, Roberta Findorff.

J.E.T.S.

First row: Nile Brennecke, John DeButts, James White, David Brintnall, David Drew, Gary Jacobson, Larry Vint. *Second row:* Dennis Wilson, Stanley Payne, James Mathews, Bill Egleston. *Third row:* John Barrigar, Sponsor; Jerry Winston, Bill Kelly, James Cormicle, Norman Barker, Tim Merrill, Allan Ewalt, Jerry Lokensgard, George Danielson, Ernie Green. *Fourth row:* Gene Davenport, Donald Alexander, David Mendenhall, Dick Horton, Ronald Eichorn, Lee Egleston, Gary Slegee, Hal Loney, David Hemphill, Craig Henderson.





SCHOLARSHIP SOCIETY OFFICERS: Ed Farber, Vice President; Donna Fugate, Secretary; Gary Thurston, President.

Scholarship Society is made up of MHS students who have maintained a 3.5 grade point average for at least three semesters. Assemblies are held twice each year to give recognition to these students.

Scholarship Society

First row: Sarah Scheffert, Barbara Doll, Beverly Wilcox, Marilyn Kneeland, Patricia Noid, Maris Collins, Sandy Glans, Mary Gail Noid, Mimi Wolfe. *Second row:* Nancy Yeager, Ina Mae Middleton, Donna Fugate, Karen Baker, Mary Pattie, Nancy Thomas, Tim Merrill, Jerry Winston. *Third row:* Charles Eckles, Jerry Lokensgard, David Brintnall, Dick Horton, Ed Farber, Clarence Scheffert, Bob Button, Gary Thurston.





First row: Janet McQuiston, Judy Stone, Carlene Nelson, Marcia Kothenbeutel. *Second row:* Ann Collison, Karen Harris, Melanie Helm, Barbara Johnson, Martha Whitcombe, Lisa Smith, Tommy Mitchell, Allen Harder. *Third row:* Larry Vint, Mary Turner, Deanna Smith, David Druker, Lynn Cunningham, Don Hickman, Mike Marble, Craig Henderson, James Blue.

Scholarship Society



Professor Jones from Iowa State Teachers College spoke at the mid-year scholarship assembly.



Beverly Wilcox receives a scholarship certificate from Mr. Miller.



OFFICERS—*Front row:* Mrs. Carol Dodd, Sponsor; Mary Gail Noid, Treasurer; Gary Thurston, President. *Back row:* LeRoy Willim, Vice President; Nancy Thomas, Secretary; Jane Lynch, Historian.

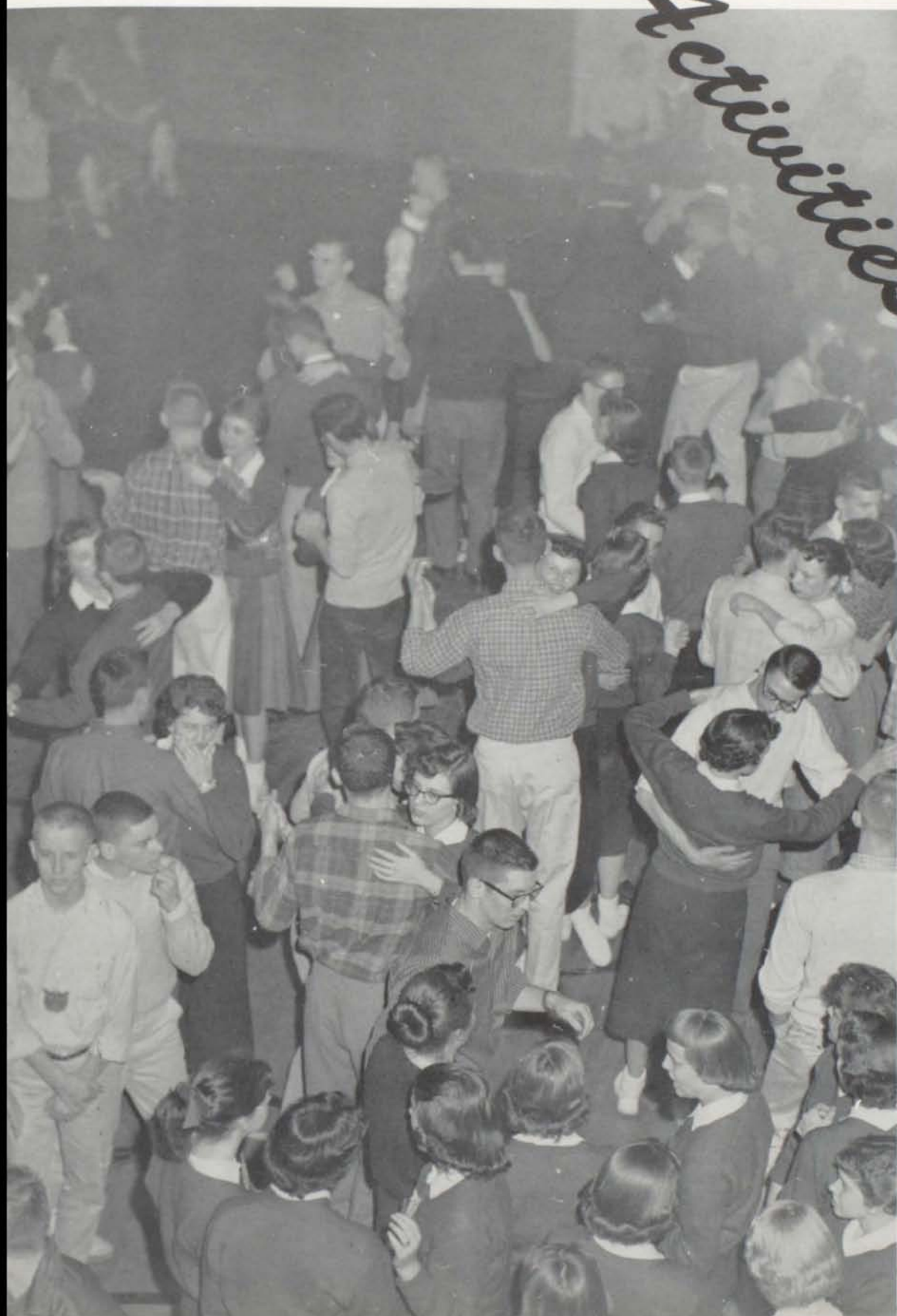
Masque and Dagger is an organization of speech students who have taken an active part in the presentation of production of plays. This year, with Mrs. Dodd as sponsor and director, the group presented "The Teahouse of the August Moon" as an extra show.

Masque and Dagger

First row: Carolyn Payne, Karen Kralik, Ann Collison, Sybil Bailey, Melanie Helm, Suzanne Buchanan, Carol Winston, Janice Hobson, Linda Momberg. *Second row:* Mary Turner, Marilyn Moore, Linda Lamer, Marcia Davenport, Sharon Miller, Sammy Conte, Karen Harris, Barbara Oberstein, Pauline Perry. *Third row:* Donna Fugate, Bonnie Evans, Susan Smith, Jean Peak, Ruth Brenner, Jane Lynch, Kay Meldahl, Ann McGregor, Lisa Smith. *Fourth row:* Gary McCormack, David Drew, Russ Betts, Jim Blue, LeRoy Willim, Gary Thurston, Stan Reid, David Thomas, Charles Eckles, John Strever.



Activities





Homecoming Festivities





Homecoming Queen
Madeline Wolfe



*Attendant
Jeannie Cook*

*Attendant
Sandra Glans*



*Attendant
Peggy Brainerd*



*Attendant
Karen Baker*



Business Manager
PENNY PROCTOR



Managing Editor
JERRY WINSTON



Page Editor
LEROY WILLIM



Editor-in-Chief
GARY THURSTON

Advertising Editor
BEVERLY WILCOX



Exchange Editor
JEAN PEAK



Sports Editor
GARY McCORMACK



Pebbles Staff

Circulation Manager
STANLEY WOOSTER



Copy Editor
SANDRA BOLLE





NEW STAFF PUBLISHES PEBBLES SECOND SEMESTER

The second semester journalism staff was: *front row, left to right*: Janice Nash, Assistant Advertising; Barbara Doll, Managing Editor; Pat McCord, Feature Editor; Verna Kay Shaw, proofreader; and Sally Dickerson, Circulation Manager. *Second row*: David Gibson, Advertising Manager; Bill Barker, Copy Editor; Sonny Finch, Sports Editor; Al Rudison, Copy Editor; Tom Stanley, Assistant Sports Writer; Mike Brimmer, Exchange Editor; Dick Brown, Business Manager; Steve Ridenour, Head Typist. Gary Thurston continued as Editor.



DICK TALMADGE

Early morning journalism class was always a busy place.

Journalists at Work

Journalism Photographer Dick Talmadge spent many hours working as photographer for both Pebbles and Post Script. He was responsible for taking all pictures except those done by the professional photographers.

Editor Kay Meldahl is shown making the Post Script dedication to Misses Helen and Florence Boten.



Assistant Editor
ALICE BRADBURY



Advertising Manager
JEANNIE COOK



Business Manager
MARY PATTIE



Senior Section
DONNA FUGATE



Post Script Staff



Underclassmen Section
PAT TWEED



Faculty Section
JANICE HOBSON



Clubs Section
CHARLES ECKLES



Editor-in-Chief
KAY MELDAHL

Music Section
HERBERT HOOP



Circulation Manager
AVONELLE SMITH



Sports Section
ROBERT BUTTON



Activities Section
ANN MCGREGOR





VARSITY CHEERLEADERS—*Right to left* are: Sandra Glans, Joanne Cook, Jeannine Loros, Maris Collins, Jeannie Cook, and Nancy Thomas.



Donna Wilcox—A Varsity Cheerleader who moved to South Dakota.

Cheerleaders



SOPHOMORE CHEERLEADERS—*Right to left* are: Sharon Burnham, Karen Olson, and Patty Thomas.





You Can't Take It With You

"You Can't Take It With You," by George S. Kaufman and Moss Hart, a comedy, was presented by Masque and Dagger on November 4 and 5, 1957.

THE CAST

<i>Alice</i>	Nancy Thomas
<i>Mr. Henderson</i>	Gary Loney
<i>Kohlenhov</i>	Steve Ridenour
<i>Ed</i>	Jerry Winston
<i>Tony Kirby</i>	David Thomas
<i>Mr. Kirby</i>	Charles Eckles
<i>Mrs. Kirby</i>	Mary Pattie
<i>Penelope Sycamore</i>	Mary Gail Noid
<i>Martin Vanderhof</i>	Gary Thurston
(Grandpa)	
<i>Essie</i>	Donna Fugate
<i>Rheba</i>	Linda Lamer
<i>Paul Sycamore</i>	LeRoy Willim
<i>Mr. DePinna</i>	John Strever
<i>Donald</i>	Paul Koehler
<i>Olga</i>	Barbara Oberstein
<i>The Man</i>	David Drew
<i>Mac</i>	Russell Betts
<i>Jim</i>	Herbert Hoop

TECHNICAL STAFF

<i>Director</i>	Carol Dodd
<i>Director's Assistant</i>	Jane Lynch
<i>Technical Director</i>	Audrey Hayes
<i>Stage Crew</i>	John Strever, David Thomas, Charles Eckles
<i>Scene Design</i>	Ruth Brenner
<i>Props</i>	Martha Ward, Sharon McKibben
<i>Stage Dressing</i>	Sharon Miller
<i>Costumes</i>	Jeannie Cook
<i>Make-up</i>	Mary Pattie, Ann McGregor, Ruth Brenner, Martha Moore
<i>Sound</i>	Penny Proctor
<i>Lighting Technician</i>	Robert McAuley
<i>Electricians</i>	Tim Merrill, Jim Blue, Douglas Graham
<i>Publicity</i>	Peggy Brainerd
<i>Ticket Sale</i>	Jerry Winston, Bryan Cole
<i>Program</i>	Jan Hobson, Gary Thurston



The Teahouse of the August Moon

"The Teahouse of the August Moon," by John Patric, a comedy, was presented by Masque and Dagger January 30, 1958.

THE CAST

<i>Sakini</i>	John Strever
<i>Sgt. Gregovich</i>	Gary Loney
<i>Col. Wainright Purdy III</i>	Charles Eckles
<i>Captain Fisby</i>	Russell Betts
<i>Old Woman</i>	Ruth Brenner
<i>Old Woman's Daughter</i>	Sharon Miller
<i>The Daughter's Children</i>	Mary Gail Noid
	Linda Momberg, Janice Hobson
<i>Lady Astor</i>	The Goat
<i>Ancient Man</i>	Penny Proctor
<i>Mr. Sumata</i>	Paul Koehler
<i>Mr. Sumata's Father</i>	Martha Ward
<i>Mr. Hokaida</i>	LeRoy Willim
<i>Mr. Seiko</i>	Gary McCormack
<i>Mr. Oshira</i>	David Thomas
<i>Mr. Omura</i>	Jerome Winston
<i>Mr. Keora</i>	Linda Lamer
<i>Villagers</i>	Susan Smith,
	Ann McGregor, Gary Thurston, Jane Lynch, Herb
	Hoop, Kay Meldahl, Bryan Cole, Donna Fugate,
	Nancy Thomas, Karen Hilleman
<i>Miss Higa Jiga</i>	Sharon McKibben
<i>Ladies League</i>	Martha Moore,
	Mary Pattie, Jeannie Cook, Alice Bradbury
<i>Lotus Blossom</i>	Peggy Jo Brainerd
<i>Captain McLean</i>	David Drew

THE TECHNICAL STAFF

<i>Director</i>	Carol Dodd
<i>Director's Assistant</i>	Jane Lynch
<i>Scribe</i>	Susan Smith
<i>Stage</i>	Gary Thurston
<i>Scene Design</i>	Nancy Thomas, Ruth Brenner
<i>Stage Dressing</i>	Martha Moore,
	Karen Hilleman, Sharon Miller
<i>Props</i>	Linda Lamer,
	Martha Ward, Sharon McKibben, Janet Rogers,
	Susan Smith
<i>Costumes</i>	Donna Fugate,
	Alice Bradbury, Kay Meldahl
<i>Program</i>	Jan Hobson
<i>Ticket Sales</i>	Bryan Cole, Jerome Winston
<i>Publicity</i>	Sharon Miller,
	Ann McGregor, Mary Gail Noid
<i>Construction</i>	David Thomas, Gary McCormack
<i>Sound</i>	Steve Ridenour
<i>Paint Crew</i>	Kay Meldahl,
	Susan Smith, Alice Bradbury, Jane Lynch
<i>Electricians</i>	Tim Merrill
	Doug Graham, Jim Blue, Eugene Bear



Dress Reversal

Assemblies



Virginia Sale



Scholarship Assembly



Chief's Judo Tricks



The Ballentines

Beachler Duo



The Christmas Play



GY's Snowball — December 28



Sitting it out



A fast one



Music by the Esquires



Relaxing



Some of the chaperons



A slow one



Entering Elmwood



Sophomore Aptitude Tests

*Memories Are
Made of This*

G.R. A. Meeting



I Wonder?



That-a-way Team!



Chemistry Students



Congratulations!



Music





First row: Craig Henderson, Richard Knappen, Roger Eubank, David Anderson, Larry Beck, Gary Jacobson, Barbara Judge, Carolyn Payne, Maris Collins, Jeannie Cook, Sandra Smith, Jill Collins, Sharon Dougan, Donna Burgess, Carolyn Jessen, Clarence Scheffert, Harold Healy, Larry Jacobson. *Second row:* David Ellis, Darrel Peterson, David Lundberg, Harry Black, Ronald Galloway, Robert Riggins, Virginia Redden, Carol Winston, Donna Ferguson, Gloria Giannetto, Linda Lamer, Myrna Niederhauser, Donna Fugate, Marilyn Kneeland, Sherry Hoskins, Sybil Bailey, Sandra Specht, Bill Scheffert, Allen Ewalt, Jim Scovill. *Third row:* Gary Rieger, Jim Ray, John O'Keefe, David Brintnall, Steve

Ridenour, Gary Gould, Tom Benge, Marta Stensvaag, Margaret Rayburn, Shirley Barker, Harriet Beaty, Susan Wolfe, Nancy Thomas, Jane Lynch, Jeanne Stubbs, Pat McCord, Sharon Ellis, Robert Galloway, Art Boone, Dale Nichols. *Fourth row:* Jim Cormicle, Gary McCormack, Dick Horton, Jim Cope, Darrel Foreman, Robert Bruggeman, LeRoy Willim, Judy Bogard, Sharon Menter, Margaret Wilson, Bonnie Evans, Pat Tweed, Avonelle Smith, Karen Baker, Glenda Eggleston, Diana Tressler, Margaret Mischler, Ann McGregor, Kathy Diller, Jerry Lokensgard, Londell Johnson, Herb Hoop, Bob Eurom.

M.H.S.



MR. STEPHEN MELVIN
Director

Mixed Chorus



MIXED CHORUS OFFICERS

MARIS COLLINS	<i>President</i>
LEROY WILLIM	<i>Secretary</i>
JEANNIE COOK	<i>Vice President</i>



Mr. Melvin receives Christmas gift from Mixed Chorus members.

A BUSY YEAR FOR VOCAL MUSIC

Throughout the year the vocal music department could be heard rehearsing on Monday, Wednesday, and Friday.

All three vocal groups worked on songs for the annual Christmas concert held December 15 and the Christmas assembly December 20. Soloists were Jean Stubbs, John O'Keefe and David Brintnall.

After the beginning of the new year, mixed chorus could be heard working on numbers to be sung at the Central Iowa Conference Music Festival March 11.



First row: Glenda Fisher, Judy Bailey, Margaret Backoff, Jami Wilkinson, Karen Kralik, Jeannine Loras, Joan Curson, Bev Wilcox, Ellen Medhus. *Second row:* Pat Williams, Mary Andrews, Nancy Hawley, Bonnie Hayes, Carmen Bowers, Sharon Himes, Sherril Hamilton, Connie White. *Third row:* Sandra Bolle, Sally Garland, Margaret Rolfe, Fonda Phillips, Arvilla Diller, Karen Purvis, Barbara Stackhouse, Deanne Lawthers, Margaret Allen. *Fourth row:* Karen Swartz, Darlene Kruse, Betty Slifer, Carolyn Pearson, Rachael Serfoss, Lisa Smith, LeAnn Tassler, Patsy Stotts, Marilyn Trieber, Claudine Thompson, Sandra Spencer.

Junior-Senior Glee Club

NICKI WILSON	Secretary
MARY ANDREWS	President
JAMI WILKINSON	Vice President





First row: Sidnee Svec, Sharon Kimberlin, Jeanne Thornton, Laura Hamilton, Marilyn Schroeder, Patty Stonewall, Dixie Elliot, Linda Rhine, Joyce Bulanek, Nancy Ream. *Second row:* Geri Brooks, Bonnie Tweed, Marilyn Culp, Eleanor Draegert, Gloria Mills, Judy Walsh, Mary Ann McFarland, Virginia Springer, Dorothy Smith, Jeanette Hoffman, Carilyn Westman. *Third row:* Patty Thomas, Kookie Cluster, Margaret Roupp, Mary Close, Charlene Worsfold, Linda Hauser, Elizabeth Austin, Susan Reynolds, Linda Perrin, Lynn Miller, Judy Wilson, Nancy Determan, Diane Bryant, Karen Olson, White, Jannora Taft, Sandra Peterson, Judy Short, Nancy Lampman, Jane Biggs, Linda Faulkner, Anita Smith, Joyce Roberts, JoAnn Giannetto, Marlys Lampman.

Sophomore Glee Club

SOPHOMORE GLEE CLUB OFFICERS

SUSAN REYNOLDS	Secretary
MARILYN SCHROEDER	President
JEANNETTE HOFFMAN	Vice President





First row: Janet McQuiston, Karen Western, Judy Button, Craig Henderson, Carolyn Payne, Bonnie Evans, Karen Jones, Joan Davenport, Deanne Dobson, Sandy Howell, Sharon McKibben. *Second row:* Deanna Smith, Judy Stone, Martha Whitcomb, George Coffin, Jerrald Lokensgard, Melanie Helm, Arlene Tychsen, Judy Eige, Jerry Oak, Pete Schirra, Ted Williams, Wayne Helfer, David Scheiding, Karen Kralik, Mary Turner, Sammy Conte. *Third row:* Mary Fiscus, Gleneta Miller, Anita Smith, Jean Eichorn, Janice Harvey, Susan McMurray, Dick Horton, Dave Hemphill, Bill Barker, Jerry Peek, Jim Smith, Gary Thurston, Gilbert Harris, Don Wiltse, Allen Harder, Dennis Severson, Jim Hatfield, Karl Rinehart, Kathy Pegg, Larry Huisman, Jerry Winston, Karen Noel, Carol Maytag, John Noid, Linda Williams. *Fourth row:* Leroy Doggett,

Dick Noid, Mary Bachman, Ardell McCrary, Nancy Gronwoldt, Kenneth Burnett, Roy Jenkins, Susan Smith, Marilyn Faust, Sandra Felper, Gregg Roth, Jerry Robinette, Don Miller, David Whaley, Lynn McCord, Robert Johannsen, Tom Schmidt, Stanley Reid, Jim Blue, Glenda Eggleston, Karen Baker, Steve Willard, Jim Collins, Richard Johannsen, Barbara Hemphill, Sam Beaty, Bonnie Hayes, David Norland, George Perry, David Wildung, Janet Rogers, Marilyn Reisinger, Don Hickman. *Fifth row:* Pat Nodland, Connie Kelso, Marcia Davenport, Dixie Hilleman, Donna Burgess. *Sixth row:* Keith Avise, John Phillips, Gary Jacobson, Tim Walsh, Richard Davenport, David Brintnall, Pete Jacobson, David Lawrence, John Gazaway, Dave Thomas, Carolyn White, Garnet Lininger, Susan Day, Suzanne Buchanan, Sandra Butler.

M.H.S.



MR. ARMON ADAMS
Director

Band



BAND OFFICERS

DAVID BRINTNALL *Vice President*
DAVID HEMPHILL *President*

BAND MEMBERS HAVE MANY ACTIVITIES

The musical strains you heard in the lower halls on Monday, Wednesday, and Friday were made by the band. During football season, however, they were marching up and down Franklin Field in preparation for the elaborate halftime shows presented at the games.

The annual student band concert, featuring a trumpet solo by Dick Horton, was held in an assembly January 17.

On March 25, the band attended the Central Iowa Conference Band Festival at Newton. Newton, Grinnell, Oskaloosa, and Marshalltown participated.

DRUM MAJOR
JERRY PEEK





Majorettes

First row: Nancy Roeder, Ruth Brenner. *Second row:* Linda Perrin, Sandra Saccaro, Barbara Johnson. *Third row:* Kay Meldahl, Alice Bradbury, Jane Lynch, Lisa Smith.



Basketball Band

First row: Janet McQuiston, Judy Stone, Judy Button, Karen Western, Pete Shirra. *Second row:* Karen Baker, Marilyn Reisinger, Craig Henderson, Deanne Smith, Martha Whitcombe, Sammy Conte, Mary Turner. *Third row:* Janet Rogers, David Hemphill, Gary Thurston, Jim Smith, Bill Barker, Jerry Lokensgard. *Fourth row:* Don Hickman, Dick Horton, David Brintall, Jerry Winston.

Pep Band

First row: David Brintnall, Gary Jacobson, Jim Smith. *Second row:* Wayne Helfer, Steve Williard, Dick Horton, Jerry Winston. *Third row:* Don Hickman, Jerry Peek, Pete Jacobson, David Hemphill, George Perry.



M.H.S.



Orchestra

MR. FORREST FOWLER—*Director*



First row: Margaret Rayburn, Avonelle Smith, Doug Graham. *Second row:* Sandra Howell, Sharon McKibben, David Sellers, Melanie Helm, Jerrold Lokensgard. *Third row:* Jerry Winston, Mary Turner, Sammy Conte, Craig Henderson, Carolyn Payne, Judy Eige, Arlene Tychsen, Donna Fugate. *Fourth row:* Don Hickman, Marilyn Reisinger, Janet Rogers, Karen Western, Janet McQuiston, Judy Stone, Ted Williams, Dick Horton, David Hemphill, Jerry Peek. *Back row:* Suzanne Buchanan, Sandra Butler, Keith Avis.

ORCHESTRA OFFICERS

DOUG GRAHAM *Vice President*
 AVONELLE SMITH *Secretary*
 DONNA FUGATE *President*





Jerry Lokensgard plays
at Scholarship As-
sembly.



Basketball Band adds support at all home games.



Mrs. Stephen Melvin accompanies combined Glee
Clubs at Christmas Assembly.



The band hard at work with Mr. Adams.



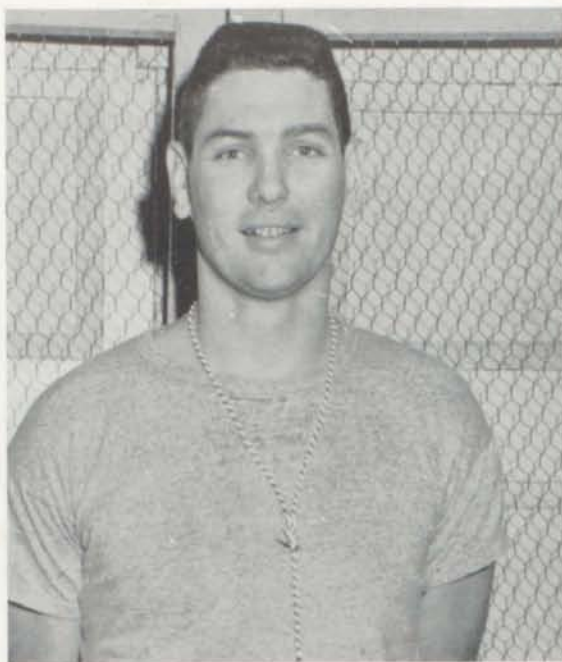
Soloist Dick Horton at
Band Assembly.

Sports





TOM EVANS has been an MHS coach for two years. He is the head football coach and an assistant track coach. Mr. Evans also coaches J.C. basketball.



EV COCHRANE is another who began coaching here last year. He is the head basketball coach, a sophomore football coach, and an assistant track coach.

Coaches



DEAN HOUSEL is another two year MHS coach. Mr. Housel is an assistant football, basketball, and track coach.



WARREN DICKINSON is the other veteran coach. He coaches the tennis team.



KENNY DEAN, a veteran coach, is head track coach, assistant football coach, and scouts for the basketball team.



BILL VANA, who also came here last year, coaches baseball, golf, sophomore football, and sophomore basketball.

at M.H.S.



AL FIENUP is the fifth second year coach. He coaches gymnasts, and is in charge of the new intramural program.



Coach Evans talks over a play with Mike Marble before sending him into the game on a cold fall evening.



A. RUDISON
L. Field
.226



S. FINCH
S.S.
.375



R. HAMILTON
3 B.
.174

*Baseball
Addition Gives
Year-Around
Sports Program*



R. WAGNER
C. Field
.358



R. WHARTON
2 B.
.167



L. ST. JOHN
R. Field
.250



G. HORN
P.
.125



D. PHILLIPS
1 B.
.342



D. MAHLE
P.
.091



L. KING
C.
.262



BOBCAT OWNERS OF A 9-6 RECORD

Members of the 1957 Bobcat baseball team were, *front row, left to right*: Roger Hamilton, Larry King, Jim Wharton, Stan Wooster, Ron Wagner, Allan Rudison, Gary Spencer, Dick Mahle. *Back row*: Grant Peterson, Assistant Coach; Tom Switzer, Sonny Finch, Ken Wagaman, Rich Wharton, Larry St. John, Don Phillips, Gene Horn, Tom Shahan, Manager; Bill Vana, Coach.



A BATTER

Left: A leading Bobcat batter was Don Phillips, who with a .342 percentage led the team in doubles and got one of two home runs.

AND A PITCHER

Right: Gene Horn was the number one pitcher and threw beautiful ball down the tournament trail.



FIRST BASEBALL SEASON A SUCCESS

Marshalltown's Bobcats, coached by Bill Vana, completed their first season of baseball in over a generation this year. It was a down and up season, which saw the Bobcats finish with a good 9-6 record.

Marshalltown started very slowly, losing five of the first six games. This poor beginning seemed to be due chiefly to the lack of consistency in pitching and poor hitting. The brightest spot of these six games was an unassisted triple play by Sonny Finch in the opener at State Center.

Gene Horn and Dick Mahle began to come around and started to pitch some superb ball midway in the season. At the same time the batters began to get some distance, and the Bobcats ended the regular season winning the next four games for a 5-5 record.

The 'Cats continued their fine play, to romp through three games in the Sectional tournament and one in the District, before falling in the District final.

Marshalltown's basic strength seemed to be in fielding, where the infield, led by Sonny Finch, topped the attack.

Half of this squad is ineligible for future high school competition, having graduated, but there is some strength remaining, which could prove the foundation for another top team.



TWO TOP FIELDERS

Rich Wharton, *left*, and Sonny Finch made a great fielding combination for the Bobcats.

TWO TOP MANAGERS

Tom Shahan, *left*, and Roger Moore were the hard-working baseball managers.

BOBCAT BASEBALL SCORES

<i>we</i>		<i>they</i>
2	State Center	9
2	Ames	4
2	State Center	14
2	Dysart	3
12	Eldora	8
10	Ames	17
8	Radcliff	1
16	Grinnell	1
24	Grinnell	2
5	Eldora	0
SECTIONAL TOURNAMENT		
3	Union-Whitten	0
9	Hubbard	7
8	Le Grande	0
DISTRICT TOURNAMENT		
9	Montezuma	0
1	Van Horne	10





ROD VON KROG
Senior
Quarterback and
Halfback



LEN SCHNATHORST
Senior
Halfback



RON WOOSTER
Junior
Halfback



DUNK JOHNSON
Senior
Guard



DARRELL FOREMAN
Junior
Tackle



DICK RHINER
Senior
End



GORDEN BURKE
Sophomore
Tackle



GARY LONEY
Senior
Guard



ALLAN RUDISON
Senior
Fullback

Football "First Team" *Loaded* *With Underclassmen*



DAVE DRUKER
Junior
Quarterback



CRAIG SPENCER
Sophomore
Halfback



LARRY ST. JOHN
Junior
Center



BERNIE BROWN
Junior
Guard



MIKE MARBLE
Junior
Tackle



RICH WHARTON
Junior
End



1957 FOOTBALL TEAM ADVANCED WITH THE YEAR

Members of this year's fine Bobcat football team were: *Front row, left to right:* Dean Housel, Assistant Coach; Gary McCormack, Craig Spencer, Allan Rudison, Ron Von Krog, Bernie Brown, Gary Loney, Dick Rhiner, Bob Bibb, Pete Jacobson, Bill Barker, Ed Farber, Lynn Cunningham, Bob Button, Manager. *Second row:* Tom Evans, Head Coach; Dean Worrell, Chuck Warnhoff, Jerry Lokensgard, Steve Andrews, Pete Schirra, Gordon Burke, Larry St. John, Clarence Albers, Darwin Meyer, Craig Carlson, Pat Barker, Darrell Foreman, Mike Marble, Roger Watson, Tom Switzer, Trainer. *Back row:* Kenny Dean, Assistant Coach; Tim Walsh, Dennis Paul, Doug Graham, Rich Wharton, Ron D'Orazio, Chuck Badgley, Herb Long, Dunk Johnson, Gary Gifford, Hoot Niederhauser, David Thomas, Len Schnathorst, Stan Wooster, Pat Dyrland, Ron Wooster, Tom Mitchell, Manager.

CAREERS ENDED FOR MANY SENIORS

These seniors won't be around next year to give the Bobcats a boost. *Front row, left to right:* Gary McCormack, Stan Wooster, Doug Graham, Allan Rudison, Rod Von Krog, Gary Loney, Dick Rhiner, Ron D'Orazio, Dunk Johnson, Pat Barker. *Back row:* Len Schnathorst, Bill Barker, Jerry Lokensgard, Herb Long, Pat Dyrland, Ed Farber, Dean Worrell, Hoot Niederhauser, David Thomas, Darwin Meyer.



CATS HAVE SUCCESSFUL SEASON WITH 3-6 RECORD

The 1957 Bobcat football season, although not too good from a won-lost view, would have to be termed successful. The squad learned a lot and advanced tremendously during the fall. If mistakes and fumbles, the Bobcats' year-long weakness, could have been eliminated, Marshalltown could very well have ended with a 6-3 record instead of 3-6.

Marshalltown ran over Lincoln of Des Moines in the season opener and outplayed Oskaloosa in a scoreless first half the following week. However mistakes and fumbles came along the second half and let Osky run. The Bobcats then beat Boone in a see-saw battle. The next week they fell to Newton in a game they could have won except for that same old weakness. In the Homecoming game the Cats ran over Tech of Des Moines for the first half, then fell apart and lost.

The next week the mistakes and flu stopped any resemblance of an offense and they were a victim of West Waterloo. The Ames Little Cyclones then proved their power and alertness in rolling over Marshalltown. Next Grinnell sloshed to three touchdowns before the Bobcats came back the second half, but the rain and mud had become too big a foe to overcome. Suddenly Marshalltown got all of its talent and desire assembled and went to Charles City to crush the Comet's five game win streak.

The Bobcats ended tied with Boone for fifth place in the final Central Iowa Conference standings.

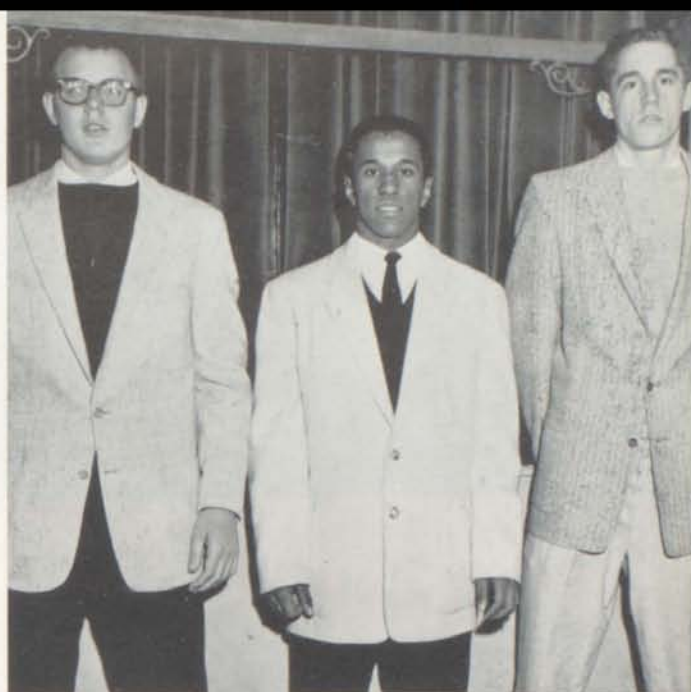
The outlook for the future is bright with eight of the first eleven players returning. There should be good speed and roughness in the line next year. Bernie Brown, a standout in the line for two years, has been elected captain of next year's squad.

BOBCAT SCORES

<i>we</i>		<i>they</i>	<i>we</i>		<i>they</i>
26	Lincoln, D. M.	0	0	Waterloo West	14
7	Oskaloosa	19	13	Ames	41
18	Boone	14	6	Grinnell	19
7	Newton	19	25	Charles City	13
14	Tech, D. M.	18			
			128		145

FINAL CIC STANDINGS

<i>Conference</i>	<i>W</i>	<i>L</i>	<i>All Games</i>	<i>W</i>	<i>L</i>	<i>T</i>
Ames	5	0	Ames	8	0	0
Oskaloosa	3	2	Grinnell	6	2	0
Grinnell	3	2	Oskaloosa	5	4	0
Newton	2	3	Marshalltown	3	6	0
Marshalltown	1	4	Boone	2	5	1
Boone	1	4	Newton	2	6	0



THREE OUTSTANDING PLAYERS HONORED AS TRI-CAPTAINS

Gary Loney, Guard; Allan Rudison, Fullback; and Dick Rhiner, End; were voted tri-captains by their teammates for the 1957 season.

TRAINER AND MANAGERS WORK FOR GOOD SEASON TOO

Tom Switzer, *left*, was trainer for this year's football season. Tom Mitchell, *center*, and Bob Button, *right*, took care of the managing chores.





Left: Craig Spencer escapes a horde of Ames tacklers in an end sweep that went for a touchdown.

Football

Right: Bobcats gang tackle a ball carrier from Des Moines Tech in the homecoming game.



Action

Left: Rod VonKrog snares a ball carrier from Des Moines Lincoln in the season's opening win.



Right: Von Krog runs wide for yardage against Lincoln.





SOPHOMORES SHOW POTENTIAL TALENT

This year's hard working sophomore football team consisted of: *Front row, left to right:* Rod Bruce, Keith Morgan, Dick Hall, Karl Brennecke, Dennis Ritland, Bill Scheffert. *Second row:* Scott McLeod, Steve Coon, Jim Smith, Dave Foraker, Gene Davenport, Jim Burns. *Third row:* Bob Ball, Gordon Burke, Dennis Vajrt, Lanny Cowell, Wayne Paul, Roger Hinshaw, Mike Petersohn. *Fourth row:* Gerald Koschielski, Larry Miller, Craig Spencer, Ron Zwemke, Bob Johannsen, Ron Long. *Back row:* Bucky Gazaway, John Niederhauser, Bill Mellows.

SOPHS START SLOW, END STRONG

Marshalltown's sophomore version of the Bobcats had a slow start for the 1957 football season. However they improved steadily, winning the final two games, for a 2-4-1 record.

Coaches for the sophomores were Bill Vana and Ev Cochran.

The sophs opened the season against classy West Waterloo and the Cats fell with a thud. The following week they came through for a tie in a defensive battle with Grinnell. In the following game Ames slipped past the Cats. Tama and East Waterloo then ran over the Marshalltown team. The Cats then found themselves to edge Toledo Juvenile Home. After a week and a half delay, because of the flu, the Bobcats whipped Newton.

Near the end of the season, sophomores Steve Coon, Jim Burns, Karl Brennecke, and John Niederhauser saw limited duty with the varsity squad to provide added depth at some positions. There were several pretty good boys on the Soph squad and they will be playing a lot of ball in the future.

SOPH. MANAGER WORKS LONG HOURS

Ron Long was this year's top flight sophomore manager.



SOPH. FOOTBALL SCORES

<i>We</i>		<i>They</i>
13	West Waterloo	33
6	Grinnell	6
13	Ames	20
6	Tama	26
7	East Waterloo	38
21	Toledo J. H.	13
18	Newton	6



ISC COACH IS BANQUET SPEAKER

Jim Myers, Head Coach at Iowa State College, was the speaker at the annual Football Banquet. He has since accepted a position at Texas A & M.



COACHES LIKE TO EAT

From left are J. C. Hoglan, Superintendent of Schools, Principal B. R. Miller, ISC Coach Myers, and MHS Coach Evans.

GRIDDERS ENJOY TURKEY DINNER

Enjoying dinner are from left: David Fagle, Teacher; Allan Rudison, Rod Von Krog, Larry St. John, Pete Shirra, Craig Spencer, and Len Schnathorst.



COACH EVANS HANDS OUT AWARDS

Herb Long receives a letter certificate for a job well done.





These 20 boys made up this year's Cross-Country team: *Front row, left to right:* Roger Moore, Tom Weaver, Dave Berg, Keith Avise, Jim Elledge, George Coffin. *Second row:* Allen Garland, Jim Cribbs, Tom Shahan, Bob Dent, Gene Buhrow, George Perry, Tom Schmidt. *Back row:* Gib Harris, Tom Stanley, Sonny Finch, Jerry Downing, Paul Perry, Ron Eichorn, Don Wiltse, Gene Horn, a junior college assistant.

Cross Country Finishes Fifth Season

Sonny Finch, *above*, and Jerry Downing were elected co-captains of the 1957 Cross-Country Team. Downing was also the outstanding runner, winning all but one of the dual meets. Both are seniors.



The 1957 Cross-Country Team is considered by Coach Kenny Dean to be one of the best represented teams in the five year history of the program. Since the team works primarily on their own, the great spirit and desire of this year's team was particularly noticeable.

The Bobcats finished with a 1-4-1 record for their six dual meets. Jerry Downing of Marshalltown won all the races except the one at Oskaloosa. The team placed third in a Quadrangular at Oskaloosa, eighth in the state mile run at Iowa City, and sixth in the state meet at Ames.

Eighteen boys participated in the program this year. Eleven of these boys are juniors or sophomores and will be returning to build a strong squad next year.

The winner of a cross-country meet is the team with the fewest points.

<i>we</i>		<i>they</i>
18	Des Moines Lincoln	18
36	Oskaloosa	18
16	Grinnell	21
35	Des Moines North	20
20	Grinnell	16
22	Des Moines Tech	14



DICK RHINER



JOHN DICKKUT



CHUCK NELSON



RICH WHARTON

14 Boys
1 Coach + *Height*
Speed =
Talent



DAVE COLE



DAVE HANSEN



PAT BARKER



LARRY ST. JOHN



SONNY FINCH



ALLAN RUDISON

Bobcat Basketball Team



DAVE WILDUNG



BOB BIBB



BRYAN COLE



MIKE MARBLE



BOBCATS FINISH WITH 15-4 RECORD

This year's fine basketball team consisted of: *Front row, left to right:* Ev Cochrane, Coach; Chuck Nelson, Dick Rhiner, John Dickkut, Dave Cole, Dave Wildung, Larry St. John, Sonny Finch, Dean Housel, Assistant Coach. *Back row:* Bob Button, Manager; Allan Rudison, Rich Wharton, Bryan Cole, Dave Hansen, Pat Barker, Mike Marble, Bob Bibb, Karl Rinehart, Manager.

OVER HALF THE BASKETBALL TEAM GRADUATES

These eight seniors have completed basketball competition with the Bobcats. They are *left to right:* Bryan Cole, Dave Wildung, John Dickkut, Dick Rhiner, Pat Barker, Sonny Finch, Chuck Nelson, Allan Rudison, Ev Cochrane, Coach.



CATS FINISH SECOND IN TIGHT CENTRAL IOWA CONFERENCE RACE

Marshalltown's 1957-58 basketball team provided one of the most exciting seasons in the school history. Eight of this year's games were won or lost by less than five points. As major accomplishments, the Bobcats finished with a 15-4 season record, were rated the top team in the central part of the state, finished second in the tight CIC, finished the fourth straight year undefeated at home against conference foes, and squeaked by Ames twice.

Tremendous spirit and a great starting five, backed by a strong bench, were the main reasons for this year's success. Chuck Nelson saw a great deal of action during the year, starting in a great part of the games. Rich Wharton, Dave Hansen, Dave Wildung, and Dave Cole also saw starting action. However, at the end of the season Coach Cochrane found a relatively small, fast team which worked well together. This combination of John Dickkut, Dick Rhiner, Larry St. John, Sonny Finch, and Allan Rudison completely bottled up Ottumwa and scored at will in the season finale to roll to a 29 point halftime lead and finish their work for the evening.

The Cats were also particularly impressive in home games with Oskaloosa, the CIC Champs, and Des Moines Roosevelt, the Des Moines City Series champions. Other nights they had great difficulty in finding the shooting range, as was the case at Newton and Oskaloosa, costing the Cats a conference title, and against West Waterloo, ending a 38 home game win streak.

Although eight of the fourteen boys on this year's squad are graduating, the prospects for next year's team appear to be bright. Most of the juniors on the 57-58 squad saw a great deal of action and some talented sophomores will be moving up. There will again be height, speed, and experience in the ranks, along with some great shooting ability.

BOBCAT BASKETBALL SCORES

<i>we</i>		<i>they</i>	<i>we</i>		<i>they</i>
64	Waverly	52	63	Tech Des Moines	59
51	Webster City	41	53	Grinnell	51
70	Cedar Rapids T. J.	54	57	Boone	43
66	Grinnell	35	53	Newton	51
54	North Des Moines	52	48	West Waterloo	58
52	Boone	38	43	Oskaloosa	47
59	Newton	62	64	Roosevelt Des Moines	49
50	North Des Moines	60	46	Ames	42
60	Oskaloosa	35	77	Ottumwa	61
63	Ames	61			

CENTRAL IOWA CONFERENCE STANDINGS

	W	L	Pct.
Oskaloosa	9	1	.900
Marshalltown	8	2	.800
Ames	5	5	.500
Newton	5	5	.500
Boone	2	8	.200
Grinnell	1	9	.100



BOBCAT MANAGERS

Seniors, Bob Button and Karl Rinehart, did the work behind the scenes for this year's basketball team. They are shown here putting away the new warm-up uniforms.

MHS OVER AMES!

Bobcats, Pat Barker, Bob Bibb, and Larry St. John whoop it up after a victory at Ames High School. Dave Hansen can be seen in the background.





Basketball

From above, counterclockwise: Nelson takes a seat against Simpson of Waverly; St. John fires a pass to Dave Cole against Grinnell; Nelson hits the floor as he steals a Newton pass. Rhiner, hidden, pivots for a shot against Oskaloosa as St. John and Dave Cole move into action; Rhiner gets off a shot as Boone guards, Langemede and Hamilton, are caught flat-footed.



Action





SOPHOMORES SECOND IN ROUGH RACE

The members of the second best team in the sophomore conference are *Front row, left to right:* Tim Lowe, Craig Spencer, Mike Petersohn, Larry Miller, Bucky Gazaway. *Back row:* Tom Mitchell, Manager; Rog Hinshaw, Wayne Paul, Dave Lawrence, Gary Bolar, Gorden Burke, Dick Hall, Ron Zwemke, Scott McCloud, Lanny Cowell, Bill Vana, Coach.

ACTION

Craig Spencer goes high for a tip against an Ames sophomore in a crucial CIC encounter.



MANAGER

Tom Mitchell was the hard-working sophomore manager.





Ron Zwemke and Dave Lawrence led the sophomore scorers.

SOPHOMORE SCORES

<i>we</i>		<i>they</i>
47	Thomas Jefferson	57
62	Grinnell	42
47	North Des Moines	26
58	Boone	34
54	Newton	44
40	North Des Moines	55
35	Oskaloosa	30
29	Ames	38
57	Tech Des Moines	52
51	Grinnell	41
62	Boone	49
52	Newton	25
43	West Waterloo	52
42	Oskaloosa	63
41	Roosevelt Des Moines	45
60	Ames	39
50	Gladbrook (overtime)	52

SOPHOMORE CIC STANDINGS

	W	L
Ames	9	1
Marshalltown	8	2
Oskaloosa	6	4
Boone	3	7
Newton	3	7
Grinnell	1	9

BOBCAT SOPHS HAVE SUCCESSFUL SEASON

An over-all 10-7 record was compiled by the Sophomore Bobcats, coached by Bill Vana. However, they had an 8-2 record in conference play to gain second place behind Ames.

Probably the highlight of the season would be a home victory over Ames. The "Little" Little Cyclones had absorbed only one defeat during the year. The MHS Sophs completely dominated the game to crush Ames by 21 points.

The following night the Bobcats were defeated by the Gladbrook varsity in a close, hard-fought game which stretched through an overtime.

Ron Zwemke and Dave Lawrence, *left*, were the offensive leaders for the second year club as they led the league scoring most of the year. However, they were pushed hard by their teammates, and Scott McCloud in particular, made great improvements at the end of the year.

All these boys will be fighting hard for positions on next year's varsity and, with this year's juniors, could mold into another great team.

Gary McCormack flips high in the air in a workout on the trampoline.



Norman Achtemeier and George Perry practice a stunt on the parallel bars.



MANY BOYS PARTICIPATE IN INTRAMURALS

Al Fienup has done a tremendous job with the MHS Intramural program. The program is operating at full capacity, using all available facilities. Badminton, basketball, bowling, softball, table tennis, tennis, touch football, and volleyball are the activities included in the year-around program.

Al is also in charge of the gymnasts, a group of boys who competed in three meets this year. Skill at the side-horse, parallel bars, and other such things is required of these boys.

The local boys came in fourth of seven schools in a meet held at the State University of Iowa fieldhouse on December 7. Other meets were held in February and March.

There is also a group of boys who work out a couple of times a week at weight-lifting. This helps a lot toward developing their bodies for competition in other sports.

Golf

Nile Brennecke and Larry Hall were the two returning lettermen for the 1958 Golf Team. Brennecke lettered as a sophomore and again last year as a junior. Hall lettered last year as a sophomore. Chuck Badgley, David Hemphill, and Dick Stevens also gave the Bobcats good support. There were a number of others who helped push the top boys even higher.

This year the golf team played Newton twice, Grinnell twice, Boone twice, Eldora twice, and Ames once in dual meets. They participated in the Little Cyclone Invitational at Ames. The Bobcats also entered the District Tournament in the State Tournament series.



The 1957 MHS Golf Team consisted of: *Front row, left to right:* Bob Button, David Hemphill, Ed Farber, Dick Stevens, John Detrich. *Back row:* Bill Vana, Coach; John DeButts, Nile Brennecke, Chuck Badgley, Larry Hall, Charles Eckles.

These 14 boys made up the year's tennis team. *Front row, left to right:* Buddy Hunt, Mike Petersohn, Dave Whaley, Gary McCormack, Craig Carlson, Mike Yordy, Dick Mahle. *Back row:* Scott McCloud, Tim Lowe, Dick Horton, Dennis Ritland, Don Phillips, Craig Henderson, Dick Brown, Warren Dickinson, Coach.



Tennis

The 1958 Tennis Squad competed in 13 dual meets, the conference Tennis meet, and the District meet in the state series. They played Ames, Newton, Grinnell, Oskaloosa, and Boone twice. The Bobcats also had single meets with West Waterloo, Cedar Rapids, Washington, and Tama.

The season started the second week in April.

Dick Mahle, Craig Carlson, Dick Brown, Gary McCormack, and Don Phillips provided a good nucleus for this year's squad.

Five boys traveled to each meet, in which there were five single matches and two double matches.



HUGE SQUAD REPRESENTS MHS IN TRACK

This year's track team consisted of *front row, left to right*: Gary Harris, Gerald Koscielski, David Mendenhall, Steve Coon, Rog Moore, Gary Loney, Dunk Johnson, Allan Rudison, Dick Rhiner, Larry St. John. *Second row*: Dave Berg, Jim Elledge, Gene Davenport, Jim Cribbs, Tom Shahan, Gene Buhrow, Burris Workman, Bob Bibb, Jerry Downing, Ralph Finch, Keith Avise, Brian Garrington, George Coffin, Kenny Williams, Jerry Peek, George Perry, Dennis Lynch, Bill Mellows. *Third row*: Jim Collins, Craig Erwin, Bob Mason, Dave Druker, Bernie Brown, Herb Long, Larry Miller, Lanny Cowell, Ron Zwemke, Jerry Robinett, Tom Schmidt, Dave Lawrence, Rog Hinshaw, Dennis Paul, Tom Garber, Bill Scheffert. *Fourth row*: John O'Keefe, John DeButts, John Niederhauser, Bill Hamilton, Ed Farber, Darrell Foreman, Rich Wharton, Jerry Lokensgard, Tom Stanley, Bob Eurom, Norman Barker, Chuck Nelson, John Dickkut, Gary Gifford, John Detrich, Russ Franke. *Back row*: Kenny Lamb, Dave Thomas, Rod Von Krog, Bob Bueghly, Hoot Niederhauser, Mike Brimmer, Darwin Meyer, Lonny Poland, Ron Wooster, Craig Spencer, Stan Wooster, Pat Barker, Pat Dyrland, Don Hickman, Paul Perry, Bob Dent, Lee Egleston, Jim Cormicle, Ron Eichorn, Don Wiltse, Chuck Warnhoff, Clarence Albers.

1958 BOBCAT TRACK AND FIELD SCHEDULE

March 15	State A.A.U.	Des Moines
29	State Indoor Meet	Iowa City
April 2	Boone Dual	Home
8	Newton-Grinnell Triangle	Home
12	Cornell Relays	Mt. Vernon
15	Ames-Boone Triangle	Ames
19	Bobcat Invitational	Home
22	Newton Dual	Newton
25-26	Drake Relays	Des Moines
May 5	Grinnell Interscholastic	Grinnell
9 or 10	District Meet	
13	Ames-Boone Triangle	Boone
16	Conference Meet	Home
19	Inter-Class Meet	Home
24	State Outdoor Meet	Ames



Lettermen returning to the 1958 track squad were: *Front row, left to right:* Paul Perry, Roger Moore, Chuck Nelson, Bob Bibb, Hoot Niederhauser, Russ Franke, Dennis Paul. *Second row:* Bob Dent, John Engstrom, Jerry Downing, Sonny Finch, Burris Workman, Jerry Lokensgard, Dick Rhiner, Pat Barker, Ron Wooster.



Len Schnathorst and Larry Lukehart were sprinters absent when the group pictures were taken.

Many Boys Participate in Track

The distance relay teams were made up of Russ Franke, Tom Shahan, Manager; Roger Moore, Bill Mellows, Bob Dent. *Back row:* Paul Perry, Dennis Paul, Jerry Downing, George Perry, John Engstrom.



The 440 and 880 yard relay teams consisted of, *front row, left to right:* Don Hickman, Chuck Nelson, Bob Bibb. *Back row:* Craig Spencer, Ron Wooster, Dick Rhiner, and Pat Barker.





Front row, left to right: Allan Rudison, Rich Wharton, Hoot Niederhauser, Pat Dyrland, Herb Long, Manager. Back row: Lee Egleston, Gary Loney, Larry St. John, Jerry Lokensgard, and Jim Cormicle were the weight men this year.



This year's hurdlers were left to right: Gene Buhrow, Jerry Robinett, Burris Workman, Larry Phipps, Sonny Finch, Stan Wooster, Tom Mitchell, Manager.



Ron Wooster works in blocks for fast spring starts.



Mats make winter broad-jump pit for Craig Spencer.



Sonny Finch gets some winter practice on the hurdles.



STATE CHAMPS

An all-star church league, made up of left to right: Jerry Peek, Larry Randall, Brian Garrington, David Drew, Bob Bueghly, Gary McCormack, Burris Workman, and Tom Bengé, receive the State YMCA Junior Basketball Championship trophies from Rod McDonnell. A one-day tournament was staged at Fort Dodge in which the Marshalltown team beat out Cedar Rapids, Ottumwa, and Burlington to gain the championship. This advanced them to a five-state play-off at Minneapolis.

Advertising



Congratulations to the
'58 Graduates
HOME FURNISHING COMPANY

Congratulations
**MID-CONTINENT
DIST. CORP.**

103 E. Church
Phone 5862
W. A. MELDAHL
Prop.



Congratulations
to the
Class of '58
ROCKY'S PIZZA

Best Wishes to the
Class of 1958

McGregor's

Marshalltown's
Dependable Home
Furnishers

- LANE CEDAR CHESTS
- HI-FIDELITY PLAYERS
- RCA CLOCK RADIOS
- COMPLETE HOME OUTFITS

Congratulations
to the
Graduates of the
Class of '58



PHONE 7885 102 E. STATE

ABEL & ABEL, INC.

26 East Main Street

**Florsheim
Shoes**

**Manhattan
Shirts**

**SOCIETY BRAND
CLOTHES**

Congratulations, Graduates

**JACK SPRAT FOODS
LETTS FLETCHER COMPANY**

Congratulations

Class of '58

FISHER GOVERNOR COMPANY

MARSHALLTOWN'S
Newest and Most Complete
Store for Men and Boys
HART SCHAFFNER & MARX CLOTHES
McGREGOR SPORTSWEAR
ARROW SHIRTS AND TIES
JACKIE JUMPER BOYS' WEAR

St. Clair-Krieger

CONGRATULATIONS, SENIORS
Compliments of
DUNHAM-BUSH, INC.
811 E. Main

CONGRATULATIONS
to the Class of '58
RENNER'S FLOWERS

201 West Main

Dial 5146

BUSINESS MACHINES, INC.

Smith-Corona Agency
SALE—SERVICE—RETAILS

Ph. 20098

Marshalltown

OUR VERY BEST
TO THE CLASS
OF
1958

Ellis'

23 WEST MAIN
Fashions for Women

THE FRANKLIN LIFE INSURANCE CO.

Springfield, Ill.

PHILLIP BAKER

EUGENE PIPPIN

Box 104

Marshalltown, Iowa

Best of Luck to the Class
of 1958

MARSHALLTOWN SHOE REPAIR

East Main Street

Congratulations to the Class of '58

ENDICOTT PRINTING SERVICE, INC.

Commercial Printing

PHONE 6720

30 SOUTH FIRST STREET



MIDWEST FLORAL CO.

Congratulations, Seniors

Printing Plates

THE

Augustine

COMPANY

Marshalltown, Iowa

Congratulations to

the Senior Class

of

1958

FASHION LEADERSHIP

in

CENTRAL IOWA



A Complete Banking Service
Commercial Savings Accounts

LOANS

COLLECTIONS

SAFE DEPOSITS

TRUSTS

Herman's

CONGRATULATIONS, SENIORS

Compliments of

HAMBLIN'S

Best Wishes for the Future

ROVNER'S "PX"

Congratulations to the Graduates of '58
DIAMOND PAINT COMPANY

"The Emblem of Quality"

709 South Third Ave.

Phone 5222

MARSHALLTOWN, IOWA



BEST OF LUCK TO THE
1958 GRADUATES
Compliments of
BOS LINES, INC.

CHINA — CRYSTAL
STAINLESS STEEL
The Right Gifts for
Your Hope Chest
**BEST HARDWARE
& APPLIANCE**

25 W. Main
Congratulations, Class
of '58
BEST OF LUCK IN
WHATEVER YOU DO

Congratulations
Class of '58
HOFFMAN'S
Quality Jewelry
21 West Main Street
Prop., M. L. SYACINA



For Over 100 Years
Folks Have Been Saying
"If It's Borden's—
It's Got to Be Good"

In Warm Air Heating and Air Conditioning

more families
buy **Lennox**
than any other make!

60 YEARS' EXPERIENCE

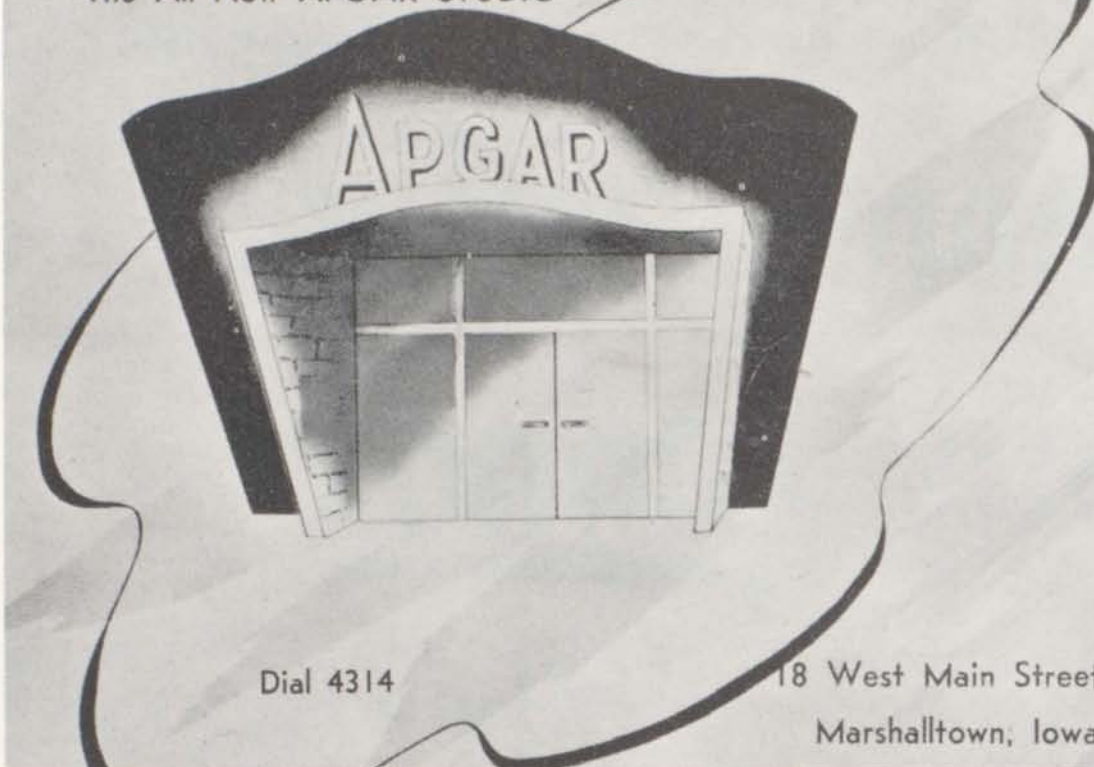
Long experience as leading specialists in the home comfort field makes Lennox heating and All Season air conditioning the finest you can buy.

LENNOX INDUSTRIES, INC.

Marshalltown, Iowa — Columbus, Ohio — Syracuse, New York
Decatur, Georgia — Fort Worth, Texas — Pasadena, California
Salt Lake City, Utah

THE LENNOX FURNACE COMPANY (CANADA) LTD., TORONTO, ONTARIO

Headquarters for Senior Portraits
The All New APGAR STUDIO



Dial 4314

18 West Main Street
Marshalltown, Iowa

MARSHALLTOWN'S

Only Exclusive
Athletic Goods Store

Everything in
Athletic Goods

H&D

ATHLETIC GOODS

DON

DENNIS

114 East Main

Ph. 8280

Congratulations, Class of 1958

**MARSHALLTOWN
CONTAINER CO.**

709 South Sixth St.

MARSHALLTOWN, IOWA

Service Plus Quality Equal Economy

**MARSHALL
OFFICE
SUPPLY**

20 West Main

Marshalltown



Success to the 1958 Class
Is the Sincere Wish of
FANTLE BROS.
DEPARTMENT STORE
PHONE 3378
Corner of Center and Main

Best Wishes to Class of
'58

SEARS, ROEBUCK

122 E. Main

**Western
Auto
Associate
Store**

**HOME AND AUTO
SUPPLIES**

106 W. Main
Ph. 8679

LOUIE'S SHOE REPAIR
Hat Cleaning and Zipper's
Repairs

110 W. Main
MARSHALLTOWN, IOWA

DAVIS PAINT ASSOCIATE STORE

Paint—Wallpaper—Gifts—Houseware
Toys—Figurines

HOWARD E. THOMAS, Owner
14 West Main Street
MARSHALLTOWN, IOWA

2-2414 Office — Phones — 2-2333 Residence

Congratulations, Grads
YOUR FUTURE IS BRIGHT!

Of Course, It's Electric

In the future, as in the past, depend
on me to help you at work and at play.
I'll make your activities easier — life
more comfortable. As always, I'm your
faithful electric servant.

**IOWA ELECTRIC
LIGHT AND POWER**

Company



Congratulations to the Class
of 1958

SECURITY SAVINGS BANK

Member Federal Deposit
Insurance Corp.
Member Federal Reserve System



BULK ICE CREAM
ALL SIZES

SUNDAES
CONES

MARSHALL ICE CREAM

25 N. First St.

"Taste Tells"
MALTED MILKS — SODAS
MILK SHAKES — SATISFACTION

BEST OF LUCK TO THE
1958 SENIORS
Compliments of
**STRAND
BAKING CO.**

Best of Luck, Seniors
**McFARLANE
JEWELRY**

Congratulations, Graduates CLIFTON'S SUPER MARKETS, INC.

109 North Center

507 Anson Street

MARSHALLTOWN INSURORS

HARVEY BALTISBERGER
20 Woodbury Building

FREET INSURANCE AGENCY
Tremont Building

BRENNECKE-GROSSMAN, INSURANCE
132½ West Main Street

FORREST C. REED INSURANCE AGENCY
3½ West Main Street

BRENNECKE INSURANCE AGENCY
Tremont Building

SHERWOOD BELL INSURANCE AGENCY
12 North First Avenue

KOEHLER INSURANCE AGENCY
Masonic Temple Building

G. W. SHORT INSURANCE AGENCY
Masonic Temple Building

DUNKERTON INSURANCE AGENCY
15 South First Street

WEBSTER INSURANCE AGENCY
Tremont Building

VAN ORMAN-VAUTHRIN INSURANCE AGENCY
Over 101½ West Main Street



Lennox Heating
Air Conditioning
MAYTAG WASHERS — DRIERS
HOTPOINT APPLIANCES
Look for This Emblem



It's your assurance of expert
heating and air conditioning
installations.

ONLY QUALIFIED LENNOX
DEALERS ARE AUTHORIZED
TO DISPLAY IT.

816 N. 3rd Avenue
DIAL 5525



CONGRATULATIONS
SENIORS

STONE'S CLEANERS

Tested and Approved
Dry Cleaning

909 N. 3rd Ave. Ph. 7340

MARSHALLTOWN, IOWA

Free Pick-Up and Delivery

"WHERE LAW ENDS, TYRANNY BEGINS."

William Pitt

MARSHALL COUNTY
BAR ASSOCIATION



CONGRATULATIONS TO THE
CLASS OF '58
and to Those Who Shop at
CURT'S
ROYAL BLUE

EWERS SHOE COMPANY

Roblee

Pedwin

Naturalizers

Trampeze

C. L. HORTON, Owner

16 West Main

Phone 3159

BOOK NOOK GIFT SHOP

Good Taste Costs No More
CONGRATULATIONS, CLASS OF '58

BEST OF LUCK TO THE CLASS OF '58
Compliments of
J. C. PENNEY STORE

Congratulations and
Best Wishes
Class of '58

MARSHALLTOWN
MANUFACTURING COMPANY

CONGRATULATIONS
SENIORS

Compliments of
RAND'S LANES

Compliments of
MARSHALL LUMBER
312 South 1st Avenue



COMMERCIAL
BANK

**EMEIS
DRUG STORE**

Headquarters for
Fine Cosmetics
19 West Main
MARSHALLTOWN, IOWA



Congratulations, Class of '58
NEWTON'S JEWELRY

— In Your Future —
Make NEWTON'S Your Headquarters
for
Watches, Diamonds, and
Silverware

KIM'S DRIVE INS
No. 3rd Ave. — Jct. 14-30
For the Finest Tenderloins
in Town
OPEN YEAR ROUND

Van Heusen Shirts
Alpagora Coats
PHILLIP'S MEN'S WEAR
17 West Main
"WHERE RIGHT DRESSERS MEET"

**MODEL
WESTERN WEAR**

Would Like to Extend the
Best of Luck to the
Graduating Class of '58

Olympia Typewriters
ALLIED OFFICE EQUIPMENT CO.
13 South 1st Street

VIC BREDIMUS
DOTTYE BREDIMUS

Congratulations
CITY LOAN COMPANY

Suite 200, 14 1/2 W. Main
MARSHALLTOWN, IOWA

IOWA INSTITUTE OF TELEGRAPHY

3rd Floor Woodbury Bldg.
MARSHALLTOWN, IOWA

Train in Marshalltown for a Railroad Career
MORNING AND EVENING CLASSES

Phone 5901



Peggy Brainerd and John DeButts Enjoy a Coke at the Y.

701 North 3rd. Ave.
Dial 8453
MARSHALLTOWN, IOWA

Coca-Cola

REG. U. S. PAT. OFF.

The Pause That Refreshes



RAY HANSEN SHOES
Happy Hikers and Velvet Step
City Club and Wesboro Shoes

Congratulations to the Class of '58
INTERNATIONAL
WATERPROOFING CO.
Complete Restoration of
Brick and Stone
303 S. 4th Ave. — Ph. 20702 or 8512
TOM FOSTER, Rep.

CONGRATULATIONS, SENIORS
Compliments of
PHILLIP'S GROCERY

SKINNER'S
BEAUTY SHOP
With Complete
Beauty Service
10 1/2 West Main Ph. 4257



CONGRATULATIONS
CLASS OF '58
Hart Schaffner and Marx Suits
Interwoven Sox Arrow Shirts

Get to Know
Gildners
YOU CAN DEPEND ON A GILDNER STORE



SANDRA GLANS

Congratulations
Class of '58

KENN'S STUDIO

207 1/2 West Main Ph. 3773

For a Real "Treat"
Come to
"TRUMP'S MARKET"

Dial 5954 Delivery

Congratulations, Seniors
McCORMICK
FARM EQUIPMENT STORE

803 N. Third Avenue
Marshalltown, Iowa

INTERNATIONAL MOTOR TRUCKS
FARMALL TRACTORS
McCORMICK FARM EQUIPMENT



Musical Headquarters
for Central Iowa
Since 1906

**SMITH MUSIC
COMPANY**

**HERE'S YOUR
CUE TO A
HAPPIER
YOU**
Join the **YWCA**

**HELLBERG'S
WATCH AND DIAMOND
SHOP**
Central Iowa's Leading Diamond
Merchants
MARSHALLTOWN, IOWA
IOWA FALLS, IOWA



SEBERG PHARMACY
Ed. Seberg, B. S., Phar.
236 North 13th Street
MARSHALLTOWN, IOWA

**BOB & CARL'S
CHAPLIN SERVICE**
12 No. 3rd Ave. Ph. 9752

DICK'S
for Car Accessories
DICK'S
114 W. Main Street
(Dick's Western Tire)

Congratulations, Class of
'58
**SMITH - HERZOG
SEWING SERVICE**



Congratulations to the
Class of '58
**SMITTY'S
SUPER VALU**
"Where Ma Saves
Pa's Dough"

SPORTS NEWS

Sports of all sorts, completely covered, may be followed during the year in your Central Iowa Newspaper.

THE MARSHALLTOWN TIMES-REPUBLICAN

and on the Air Daily on

STATION KFJB, MARSHALLTOWN

1230 on Your Dial

ALL CENTRAL IOWA NEWS
WHEN IT IS NEWS



BEST OF LUCK TO THE
CLASS OF 1958
Compliments of

Youngkers

WATCHES

Elgin . . . Bulova . . . Hamilton
Omega

DIAMONDS AND WEDDING RINGS

J. R. Wood, "Art-Carved"
Traub, "Orange Blossom"

STERLING

Gorham . . . Reed & Barton
Heirloom . . . Wallace
International . . . Towle

CHINA AND CRYSTAL

Royal Doulton . . . Flintridge
Arzberg . . . Iroquois . . . Tiffin
Bryce . . . Imperial Milk Glass

GILLAM'S JEWELRY, INC.

Registered Jeweler
American Gem Society

111 East Main St. Marshalltown, Iowa
1927-1958 OUR 31st YEAR

