

# **CHELTENHAM HIGH SCHOOL ALUMNI ASSOCIATION**



## **HALL OF FAME CEREMONIES**

Adam's Mark Hotel

City Line Ave. & Monument Rd.

Phila., Pa.

January 14, 1984

## **CHELTENHAM HIGH SCHOOL ALUMNI ASSOCIATION**

### **PRESIDENT**

*Elizabeth A. Cataldi '62*

### **FIRST VICE-PRESIDENT**

*Charles J. Stamm '67*

### **SECOND VICE-PRESIDENT**

*Lydia Rugel Zappacosta '58*

### **THIRD VICE-PRESIDENT**

*Beryl Cohen Halpern '51*

### **RECORDING SECRETARY**

*Alice Feuchtwanger Stamm '40*

### **CORRESPONDING SECRETARY**

*Susan Shaure Hamberg '56*

### **TREASURER**

*Henry E. Sklar '58*

### **SOLICITOR**

*George P. O'Connell, Esq. '62*

### **BOARD OF DIRECTORS**

*Herbert K. Fleisher '32*  
*Mary-Louise Armstrong Wolf '32*  
*Louise Bers Rose '33*  
*Alice Feuchtwanger Stamm '40*  
*David Schloss '43*  
*Beryl Cohen Halpern '51*  
*Barbara Ball Portner '52*  
*Joan David Sundheim '52*  
*Susan Shaure Hamberg '56*  
*Lydia Rugel Zappacosta '58*

*Henry E. Sklar '58*  
*Zelda Stillman Topkis '61*  
*George P. O'Connell, Esq. '62*  
*Elizabeth A. Cataldi '62*  
*Connie Whitson '66*  
*Charles J. Stamm '67*  
*Sanford Student '72*  
*Susan Kendall '76*  
*David Steinbrink '77*  
*Peter Moskowitz '77*

*David E. Edwards '80*

### **HONORARY DIRECTORS**

*Dr. Edwin B. Keim*

*Dr. Herman Wessel*

### **PAST PRESIDENT**

*Herbert K. Fleisher '32*

## **PROGRAM**

<b>RECEPTION</b>	<b>8:00 - 9:00 P.M.</b>
<b>AWARD CEREMONY</b>	<b>9:00 - 10:30 P.M.</b>
<b>WELCOME</b>	<i>Elizabeth A. Cataldi President, Cheltenham High School Alumni Association</i>
<b>PRESENTATION OF "100" CLUB</b>	<i>Richard Klein Master of Ceremonies</i>
<b>HALL OF FAME INDUCTIONS</b>	<i>Richard Klein Master of Ceremonies</i>
<b>CONCLUDING REMARKS</b>	<i>James Tufano, Principal Cheltenham High School  Leonard B. Finkelstein Superintendent, Cheltenham School District  Barbara Portner School Board Director</i>
<b>DESSERT BUFFET</b>	



### **ARTHUR MAGILL '25**

*A 1929 graduate of Swarthmore College, Arthur Magill inherited and ran his father's children's underwear business, Her Majesty Industries. In 1955, he moved the company headquarters from Pennsylvania to Greenville, South Carolina, where he and his wife, Holly, have since made their home. The firm was sold to Gulf and Western in the mid-70's.*

*In 1974, the Magills contributed half the construction costs for the Greenville County Museum of Art -- the first South Carolina museum built in the twentieth century. The building's first exhibit featured N.C. Wyeth, Andrew's father. Two years later, there was an exhibit by Andrew Wyeth, at which time the Magills owned only one Wyeth watercolor.*

*Both New York's Metropolitan Museum and the Boston Museum of Art were conducting negotiations with Joseph E. Levine, the movie producer, for the purchase of his Wyeth collection in 1979. However, neither would agree to his stipulation that the works remain on permanent display. Arthur Magill purchased the 26 Wyeth works from Levine and they are now on permanent loan to the Greenville County Museum. He is today the world's largest owner of Wyeth's, having purchased 230 directly from the artist's own collection. He owns more Wyeth's than Andrew Wyeth!*

*Magill plays tennis (despite two heart bypass operations), writes poetry, travels in order to photograph Wyeth's original backdrops and loves walking through the galleries with visiting schoolchildren.*



**ROBERT J. MYERS '29**

*Often called the nation's foremost expert on Social Security, Robert Myers is certainly deserving of this accolade. In 1934, at the invitation of the Roosevelt Administration, he was in Washington on assignment, during which time he wrote actuarial formulas for nine different old-age insurance programs. One of these tables, after revision, later emerged as the Social Security System.*

*Myers has an engineering degree from Lehigh University, his Masters in Actuarial Mathematics (University of Iowa) and two honorary doctorate degrees (Muhlenberg and Lehigh).*

*Myers served with the Social Security Administration from 1934-70, including his term as Chief Actuary from 1947-70. He left this post to teach at Temple University, Howard University and the University of Connecticut. He returned to Washington in 1981 as Deputy Commissioner of Social Security to try to save the system, but resigned as a protest over the failure of Congress to enact the necessary legislation to achieve solvency. Before his resignation, Myers was appointed Executive Director of the National Commission on Social Security Reform, and he is endeavoring to resolve the financial problems of the system and restore the public's faith in its long-range viability.*

*He is a Past President of the Society of Actuaries and a member of several national and international actuarial associations. Myers has been the recipient of numerous awards, the most recent the 1983 Distinguished Citizen Award from the National Health and Welfare Mutual Life Insurance Association. He is listed in Who's Who in America and Who's Who in the World. His book Social Security was revised and updated in 1981. Myers was in Grenada on a technical mission for the Organization of American States during the recent coup and he and his wife, Ruth, left on a chartered plane shortly before the arrival of U.S. Marines. The Myers, who reside in Silver Spring, Maryland, have two sons and three grandchildren.*

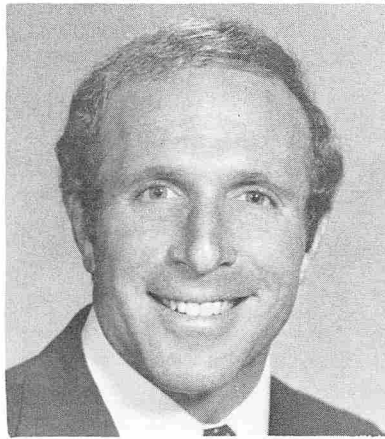


**NANCY GUEST BOUCOT CUMMINGS, M.D. '43**

*Dr. Cummings has the distinction of having been the first female rotating intern at Pennsylvania Hospital, Philadelphia; the first female resident in Internal Medicine at Hospital of the University of Pennsylvania; the first woman Renal Fellow, Peter Bent Brigham Hospital in Boston; and the first woman Associate Director, National Institute of Arthritis, Metabolism and Digestive Diseases of the National Institutes of Health. She is a Diplomate of the National Board of Medical Examiners. Her current positions include Associate Director for Kidney, Urologic and Hematologic Diseases, NIADDK at the NIH; consultant in Nephrology/Medicine, Clinical Center, NIH; Clinical Associate Professor of Medicine, Georgetown University School of Medicine, Washington.*

*Cummings counts among her several fellowships and honors the 1981 National Kidney Foundation Distinguished Service Award and the November 1975 Robert Abbe Lectureship at Philadelphia's College of Physicians. She is a member of numerous professional societies and has served on various committees for them. Over thirty medical articles have been authored or co-authored by Dr. Cummings and she is considered an international expert in kidney disease research.*

*Cummings is active in her church and also serves as a Lay Reader and Chalice Bearer at the "National Cathedral" in Washington. Many radio, television and community programs have invited her to be their guest speaker. She is married, the mother of three children (oldest son, Yale, 1983; middle son, Yale, 1985; daughter, Princeton, 1987). Dr. Cummings also enjoys cooking, reading, cultural pursuits and different forms of needlework. She is the creator of a prize-winning needlepoint rug.*



**RONALD M. SHAPIRO '60**

When Ronald Shapiro was Securities Commissioner of Maryland between 1972 and 1974, he was called the best in the country by the chief of the Securities and Exchange Commission's enforcement division. He saved investors an estimated \$10 million by strengthening the state's brokerage examination, revising the state's private offering rule and establishing a securities hot line.

A practicing corporate law attorney since 1967, Shapiro formed his own law firm in 1972 and later founded Personal Management Associates, Inc. PMA advises professional athletes, media personalities and other professionals on life management, with particular emphasis on financial matters. Shapiro handles most salary negotiations for PMA's clients. Over half the Baltimore Orioles deal with PMA and Shapiro has been publicly commended by Baltimore's mayor for his efforts in backing the Orioles' involvement in community affairs.

Shapiro has taught at several law schools and given numerous seminars in his areas of expertise. He has co-authored two legal texts and authored or co-authored about two dozen legal articles. He is listed in Who's Who in the East, Who's Who in America, Who's Who in the World, and Who's Who in American Law.

In his spare time, Shapiro also serves his religious and social communities by his affiliations with various groups including Friends of the Baltimore Symphony Orchestra. He was recently instrumental in resolving a season-delaying contract impasse for the symphony. Shapiro's volunteer efforts proved successful after federal mediation had failed.

Shapiro has been married to the former Lynn Huberman for almost twenty years and they have four children ranging in age from eight to sixteen years.



### **JONATHAN NETANYAHU '64**

*Born in the United States in 1946, "Yoni" emigrated with his family to Israel when he was three years old.*

*The family often returned to the United States and in 1963, Yoni entered Cheltenham High School while his father, Ben-Zion, taught at Dropsie University (then Dropsie College) in Philadelphia.*

*Yoni studied at Harvard University before he became an Israeli paratrooper. He was wounded in the Six Day War and decorated for bravery in the Yom Kippur War. Yoni was killed at the age of thirty, while leading the raid on the airport at Entebbe, Uganda, to free hostages, most of them Israelis, who had been held captive for almost a week by hijackers.*

*Yoni was one of the best-known young officers in the Israel Defense Forces. He had been especially picked to lead the most crucial part of the rescue of the hostages and the entire operation was afterwards designated as "Operation Jonathan" in his honor.*

*An Israeli organization has been established in his memory called the Jonathan Institute, the purpose of which is to study causes of terrorism and the best ways to cope with it.*

*From his early teens, Yoni wrote letters to relatives and friends. These have been collected by his family and assembled into a book which has been published under the title Self Portrait of a Hero. In the introduction by Herman Wouk, he calls the collection of Yoni's letters "a remarkable work of literature, possibly one of the greatest documents of our time".*



## MASTER OF CEREMONIES

**Richard A. Klein '52**

Former President of a Philadelphia public relations firm and Real Estate Marketing Corporation of America, Chicago. Currently President, Remcom, Inc., Chicago, producers and manufacturers of personalized Joan Rivers, Rod McKuen and Zoom greeting card/records for ABC Record and Tape Sales. Klein is also President of Focus Films, Inc. and Focus Video Enterprises, Inc. Series currently in production and on the air are "Focus on Women", "Focus on the Last Hundred Years", "Focus on the Arts", "Family Fortune" with Art Fleming, "Patent Pending", "Sex Talk" and "Tell Me a Story".

Married for the second time to Virginia Doody Klein, a nationally syndicated columnist, Klein enjoys four stepchildren. The Kleins spend half of each month in St. Louis, Missouri and half in Manhattan. He is on the boards of the St. Louis Repertory Theatre and the St. Louis Psychiatric Institute.

---

## **HALL OF FAME COMMITTEE**

### **Chairpersons:**

Barbara Ball Portner  
Elizabeth A. Cataldi  
Connie Whitson

### **Members:**

Beryl Cohen Halpern  
Joan David Sundheim  
Alice Feuchtwanger Stamm  
Herbert K. Fleisher  
David Schloss  
Susan Shaure Hamberg  
Zelda Stillman Topkis  
Dr. Herman Wessel

\*\*\*\*\*

The **"100" CLUB** commemorates the Centennial of Cheltenham High School by honoring one hundred distinguished graduates selected from the several hundred nominated by friends and classmates.



**MARGARET MacDONALD WARD '15.** . . Teacher/Counselor. . . started a mimeographed newspaper called Cheltonian Soph, forerunner of present day Cheltonian. . . active in establishing high school counseling and guidance programs in Pennsylvania. . . member of various professional organizations . . . Publication: The Class Organization and Its Activities



**CHARLES L. SIMON '17.** . . Chemical Engineer. . . Consultant on consumer textile design and finishing. . . member and past officer of numerous professional groups. . . co-founder of Abington's Citizen's Education Association. . . Democratic committeeman for thirty years. . . past Abington Township commissioner. . . member of REAP



**MILO A. MANLY '22.** . . Social Worker. . . was Director of Field Work for National Council for a Permanent Fair Employment Practice Commission. . . past Director State Council for Pennsylvania FEPC. . . active in NAACP. . . now retired and consultant to various State Departments on internal problems regarding racial matters. . . first Chairman, Cheltenham Board of Historical Architectural Review



**NELLIE COPPOLA ARCARA '26.** . . Realtor.. . One of only two girls of Italian descent to graduate from high school in 1926. . . community leader in Glenside . . . Director of the Glenside Chamber of Commerce. . . organized Betsy Ross Lodge of Order Sons of Italy

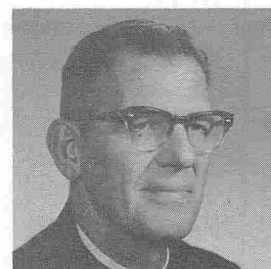


**MILLIE ROMEO MINIO '26.** . . Secretary . . . One of first two girls of Italian parentage to graduate from high school in 1926. . . helped organize opening of Edge Hill Night School for Italian people to train them for citizenship. . . Recording Secretary and second President of Betsy Ross Lodge of Order Sons of Italy

**JULIAN S. BERS '27...** Business Executive. . . President of Imperial Metal and Chemical Co. . . trustee/board member/past officer of Camp Council Inc., Jewish Employment and Vocational Service, Girl Scouts, University of Pennsylvania and several local hospitals. . . recipient of 1968 University of Pennsylvania "Alumni Award of Merit"



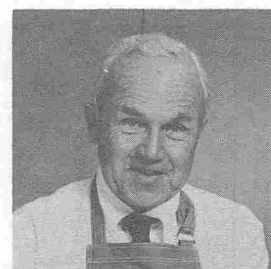
**LOUIS E. FIFER, 3rd '27...** Priest... graduated from Philadelphia Divinity School in 1935. . . has been a Parish Priest for 49 years. . . active on Boy Scout Boards and United Fund committees. . . has served All Hallows Church, Wyncote, for thirty years



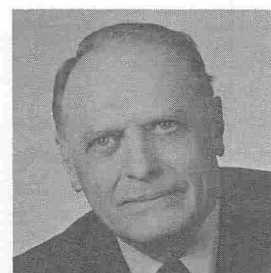
**MARJORIE TYRE SYKES '28. . . Harpist. . .**former harpist with Philadelphia Orchestra, WOR-Mutual Broadcasting, Metropolitan Opera Orchestra and soloist with New York Philharmonic. . . taught harp at Auburn University. . . founded Manhasset Auxiliary of Association for Help of Retarded Children. . . founded Auburn (Alabama) Chamber Music Society



**G. WILLIAM ORR '29. . .** Business Executive. . . Past President now Board Chairman of Oster Corporation (semi-retired)... past President of National Housewares Manufacturing Association . . . in Who's Who in America... Board member Alverno College. . . teaches skiing.. . enjoys tennis and sailing



**SYLVESTER GARRETT '29.. .** Arbitrator. . . past Professor of Law, Stanford University Law School. . . 1951-79 Chairman of U.S. Steel-Steelworkers Board of Arbitration.. . Chairman of the Iron Ore Industry Board of Arbitration and Chairman of Arbitration Panel for Newport News Shipbuilding and the Steelworkers





**JAMES FARQUHAR '30...** Philanthropist . . . started in sod-growing business. . . breeds Aberdeen Angus cattle. . . founder of Ft. Lauderdale Symphony.. . founder of Nova University. . . leading art collector in Southern Florida. . . first layman to receive Distinguished Service Award from Association of Colleges and Universities



**FLORENCE BUTZ CLOUD '30...** Free-lance Artist. . has designed murals and collages for homes in the Philadelphia area and a retirement home. . . painted panel for Children's Book Section of the Glenside Library. . . has exhibited at Academy of Fine Arts, Cheltenham Art Center and in various local shows



**BRITTON HARRIS '31 . . .** Urban Planner. . . Dean of School of Public and Urban Policy and Professor of Transportation Planning and Public Policy at U. of Pa. . . has served as consultant to several projects and organizations including the Delhi Master Planning Team and the Government of Singapore. .. has published over 100 articles in his fields



**HERBERT K. FLEISHER '32. .** Business Executive. . . Co-founder of Cheltenham High School Alumni Association and its first President. . . co-founder of Philadelphia Chapter #1 of National Association of Watch & Clock Collectors. . . awards from B'Nai Brith Wingate Lodge and Chapel of the Four Chaplains. . . twice President of Wingate Lodge

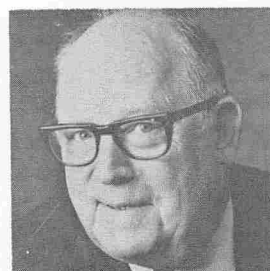


**JACK M. WAGMAN '32. .** Business Executive. . past President and owner of electric sign company and finance and leasing company. . . retired in 1979 after heart surgery and moved to Nevada. . . now oversees construction projects, and owns travel agency with his wife. . .has set up \$500/year trust fund for Cheltenham High School Alumni Association's Scholarship Fund

**JEANNE FRIEDMAN WESTHEIMER '32.** . . . Administrator. . . Assistant Dean of Harvard University Graduate School of Arts and Sciences 1967-80.. . administered graduate dormitories, budget policies, initiated discipline policy changes, counseled students on academic life, administered student loan program, . . has Master of Arts degree in Social Work



**DONALD E. PIKE '33.** . . TV Technical Consultant. . . television pioneer. . . technical Director RCA/NBC Color Television Development Project. . . two major color TV patents. . . worked on NASA manned space flights. . .TV Emmy in 1979 for "Stereo Sound" broadcast. . . consultant to NBC



**JACK KAMHOLZ '34.** . . Physician . . . prominent Dallas Obstetrician-Gynecologist for many years. . . has written several books. . . work on hypoproteinemia and shock. . . now retired



**ERNEST F. JOHNSON '35.** . . Professor. . . on staff of Princeton's Plasma Physics Lab concerned with thermonuclear fusion power reactors. . . significant research done on automatic control of industrial process. . . involved with hazardous wastes project. . . teaches on undergraduate and graduate levels



**ELIZABETH LANGSDORF MILLER '35...** Artist. . . has exhibited at Pennsylvania Academy of Fine Arts, Philadelphia Art Alliance, Corcoran Gallery (Washington, D.C.), Moore College of Art, numerous special exhibitions and one-man shows. . . in many permanent collections including Cheltenham High School





1936 Yearbook

**DOROTHY ALDEN SMITH '36.** . . . *Illustrator.*  
 . . . *art director and illustrator of some 2000 books.*  
 . . . *received several Art Director's Club medals.*  
 . . . *has exhibited illustrations, watercolors and*  
*carvings. . . enjoys her motorcycle and band-saw!..*  
*member Pa. Academy Fine Arts, Ward Foundation,*  
*Animals and People Together, garden and country*  
*clubs*



**BARBARA SNEDEKER BATES '36.** . . .  
*Writer/Editor. . . edited children's periodicals.*  
*. . . produced ten young adult books. . . taught in*  
*adult schools of Cheltenham, Abington and Upper*  
*Moreland. . . past director, Children's Book Council*  
*(N.Y.) and Philadelphia Children's Reading Round*  
*Table. . . past President Philadelphia Bookseller's*  
*Association*



**ROGER M. SCOTT ' 36.** . . . *Musician. . . Principal*  
*bass, Philadelphia Orchestra since 1948-49 season(his*  
*second season). . . Master Teacher, Curtis Institute*  
*. . .several recitals in U.S. . .proud owner of 1735*  
*Evangelisti solo instrument. . . received C. Hartman*  
*Kuhn award for ability and enterprise in enhancing*  
*standards and reputation of Philadelphia Orchestra*

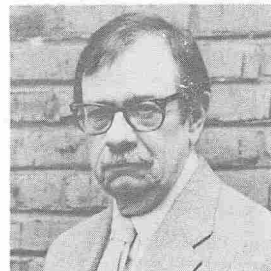


**DAVID S. SAXON '37.** . . . *Educator/Physicist. .*  
*. Fellow of American Academy of Arts and Sciences*  
*and American Physical Society. . . President of*  
*University of California for eight years. . . Chairman*  
*of Corporation of M.I.T., director of Eastman Kodak.*  
*. . author of several physics texts*



**IDA WATSON MANLY '38..** . . *Therapist/Artist.*  
*. .retired psychiatric occupational therapist. . .*  
*was Director of Partial Hospitalization for*  
*Developmental Disabilities at Northwest Center.*  
*. . local representative Experiment in International*  
*Living. . . Board of Directors Cheltenham Adult*  
*School and American Occupational Therapy*  
*Association*

**LAWRENCE DAY '39.** . . Artist. . . teaches at Philadelphia College of Art. . . visiting lecturer at universities and art schools throughout country.. . work included in several important group exhibitions and numerous one-man shows. . . 1980 received Temple University Alumni Association's Certificate of Honor. . . 1982 received Hazlett Memorial Award for Excellence in the Arts in Penna



**FLORENCE HIGGINSON BAGNALL '40.** . . . Executive Secretary. . . 1951 was Personal Secretary to Personal Physician to the President. . . 2 years with American Embassy in The Hague. . . secretary for Henry Kissinger (Nixon Administration) and Zbigniew Brzezinski (Carter Administration) . . . now working for Special Assistant to the President for Asian Affairs in National Security Council

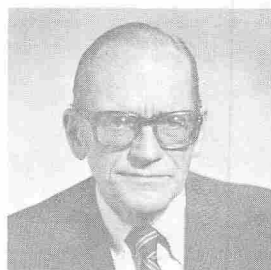


1940 Yearbook

**PAUL J FRANZ, JR. '41.** . . College Administrator. . . Vice-President for Development at Lehigh University (community and public relations, fund raising, long-range development). . . recipient of Lehigh's Alfred Noble Robinson and Hillman Awards. . . active with Council for Advancement and Support of Education, United Way, St. Luke's Hospital, Lehigh Valley Conservancy



**W. ROBERT MOORE '41.** . . Banker/Engineer. . . Senior Vice President, Chemical Bank, N.Y. . . Vice-Chairman, Board Society for Worldwide Interbank Financial Telecommunication. . . past President National Automated Clearing House Association. . . member Payment Systems Policy Board, American Bankers Association

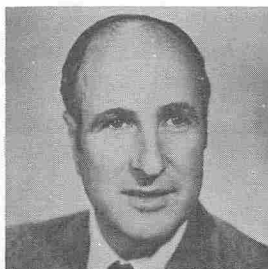


**RICHARD S. LOWE '42.** . . Judge. . . President Judge Court of Common Pleas, 38th Judicial District, Pennsylvania. . . former Montgomery County District Attorney. . . Faculty, National Judicial College, Reno, Nevada since 1974. . . has received Pennsylvania College of the Judiciary Service Award. . . author of A Summary of Pennsylvania's Law on Search and Seizure





**ROBERT KLEIN '42.** . . Business Executive. . . Director, Board Chairman of several United States and foreign corporations. . Life Trustee Muhlenberg College. . . director of many charitable groups. . . received awards from Pennsylvania State University and Muhlenberg College



**CHARLES KAHN, JR. '42.** . . Realtor. . . specializes in commercial and industrial real estate. . . past President Philadelphia Board of Realtors and Pennsylvania Association of Realtors. . . member Abington Township Zoning Hearing Board. . . serves on numerous community institutional boards



**ROBERT H. KRAICHNAN '44.** . . Physicist. . . Fellow of American Physical Society and Acoustical Society of America . . . member of American Association for Advancement of Science and American Meteorological Society. . . research affiliate M.I.T. in Meteorology. . . consultant to Los Alamos Scientific Lab. . . grantee of National Science Foundation



**ROBERT H. LAM '44.** . . Realtor. . . Chairman, Pennsylvania Securities Commission and two committees North American Securities Administrators Association . . . former Cheltenham Township commissioner, past President Cheltenham library system, former chairman Cheltenham Planning Commission, former Vice-Chairman Cheltenham Republican Party



**WALLACE H. TRIPLETT '45.** . . Real Estate Management. . . established historical and athletic records at Pennsylvania State University. . . first black varsity football player at Penn State causing establishment of their "non-discrimination" policy. . . played professional football for Detroit Lions of National Football League. . . two NFL records still stand... manages real estate in Detroit.

**H. LEWIS KLEIN '45.** . . Television Executive. .  
 . one of five founders of National Association of  
 Program Executives. . . has directed and produced  
 television programs for over thirty years.. . publisher  
 of monthly trade newsletter. . . teaches at University  
 of Pennsylvania and Temple University.. . active  
 with Easter Seal Society and Police Athletic League



**JOHN C. SHEARER '45.** . . Arbitrator/Economist..  
 . listed in Who's Who in America and Who's Who in  
the World. . . professor of Economics, Oklahoma State  
 University. . . federal arbitrator in labor relations.  
 . . researcher in manpower management and industrial  
 relations in China. . . advisor to Organization of  
 American States, United Nations and Ford Foundation



**ADOLF deROY MARK '46.** . . Architect. . . active  
 in restoration and construction of 140 structures  
 in Society Hill area of Philadelphia. .. work has been  
 published in Life, Town & Country, House Beautiful,  
The Book of Restored America... recipient of numerous  
 awards for his architecture.. . currently designing  
 in Phoenix, Arizona



**DANIEL E. BEREN '47...** Attorney.. . served ten  
 years in Pennsylvania General Assembly... active  
 in election reform. . . past Chairman Montgomery  
 County Republican Committee. . . listed in Who's  
Who in Government and Who's Who in American  
Politics.. . recipient of 1977 Baldwin-Wallace College  
 Alumni Award.. . marathon runner. . . now in private  
 practice



**DONALD S. COHAN '47.** . . Attorney/Real Estate  
 Investor. . . Captain of United States Dragon Class  
 Yachting entry 1972 Olympics... Bronze Medal Winner.  
 . . U.S. representative in ten World Championships.  
 .. large tract real estate holdings, development and  
 income real estate investments. . . active fund raiser  
 for Amherst College and Harvard Law School

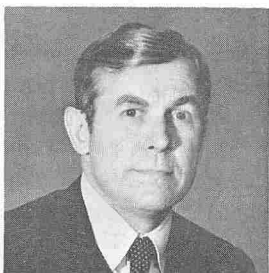




**ALBERT R. SUBERS '47...** Judge.. .Court of Common Pleas, Montgomery County. . . former attorney with 27 years experience in civil trials.. .served as solicitor for several municipalities... former Chairman, Montgomery Bar Association Executive Committee. . . member Pennsylvania and American Bar



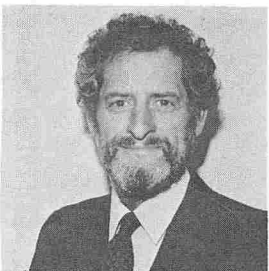
**ROBERT J. LEVY '48.** . . Professor of Law. . . University of Minnesota since 1959. . . has been visiting lecturer at Texas Law School, Northwestern University, Hebrew University in Jerusalem, University of Iowa. . . former consultant U.S. Department Health, Education and Welfare. . . varied academic and professional honors. . . numerous legal publications. . . family law specialty



**HORACE MacVAUGH III '48.** . . Physician. . . Associate Professor of Surgery, University of Pennsylvania, Assistant Surgeon, Philadelphia Children's Hospital.. .Chairman of Surgery and Chief of Thoracic and Cardiovascular Surgery, Lankenau Hospital... staff Graduate Hospital. . . medical officer Philadelphia Naval Reserve Base. . . author of many publications and four books



**LITA HAHN SOLIS-COHEN '48...** Antique Expert... nationally syndicated antiques writer, "Antiques" and "Litamail". . . writes two columns weekly for Philadelphia Inquirer.. . Associate Editor of Maine Antique Digest. . . lectured at Philadelphia Museum of Art. . . has written children's books and articles for Antiques



**J. JOEL FARBER '50.** . . Professor.. . specializes in Greek political thought, Greek myth and its relationship to Greek drama, interaction of classical world with Jewish civilization. . . former Professor of Classics and Department Chairman, Franklin & Marshall.. . recipient of several grants and fellowships, in Who's Who in America and Directory of American Scholars.. . numerous publications

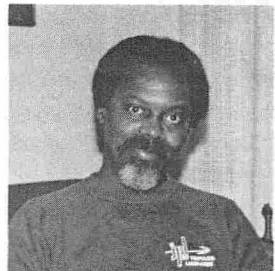
**ROGER D. ABRAHAMS '51. . . Professor.. .** Scripps College, California, Department of Humanities and Anthropology... over 200 articles and chapters in professional publications, primarily in folklore, anthropology and the ethnography of communication. . . in Who's Who in the United States and Who's Who in the World. . . Phi Beta Kappa Visiting Scholar



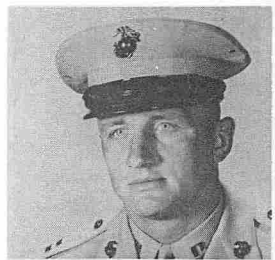
**JACQUELINE FELDENKREIS SMITH '51.. . TV Executive.. .** called "Queen of the Soaps" in Newsweek, 6/20/83.. . responsibilities include "General Hospital", "All My Children", and "One Life to Live". . . changed soap opera genre from dull to fast acting. . . started as producer of animated features at Warner Brothers. . . oversees network division with annual budget of \$250 million, work force of over 300 people



**HERMAN A. REGUSTERS '52. . . Engineer. . .** responsible for modification of jet propulsion equipment configuration for use aboard oceanographic research vessels. . . worked with NASA. . . conducted expedition in Congo Basin area of Equatorial Africa - only American to have explored and photographed portion of interior basin.. . cited by Republic of the Congo. . . designed computer handwriting analysis program



**ANTHONY W. STREMIC '52.. . Professional Services Consultant. . .** awarded Meritorius Service Medal upon retirement as Lieutenant Colonel, United States Marines. . . in Acquisition Management and Planning, Financial and Business Management and Cost Analysis with Department of Defense agencies. . . M.B.A. candidate. . . sole author and contributor to numerous technical articles



**BARBARA BALL PORTNER '52. . Secretary/Teacher.. .** co-founder of Cheltenham High School Alumni Association. . . extensive administrative experience and public service contact.. . works at Beaver College . . . co-founder Cheltenham Aquatic Club. . . newly elected as Cheltenham Township School Director





**PHILIP S. SCHLEIN '52.** . . Business Executive. .  
 . Board Chairman and Chief Executive Officer, Macy's  
 of California. .. member of Board of Directors of  
 R.H. Macy & Co., Inc. . . former Vice-President,  
 Bamberger's. . . Director, San Francisco Area Council,  
 Wharton School Alumni Club of San Francisco and  
 San Francisco Ballet. . . Board of Overseers, University  
 of Pennsylvania and University of Santa Clara



**HELEN CALLAS REINER '53.** . . Educator. . . Head  
 of Cheltenham High School's Business Department.  
 . . junior varsity softball coach. . . former field hockey  
 coach. . . awarded fourteen varsity letters during  
 college career. . . first female elected to Drexel  
 University's Sports Hall of Fame. . . in Who's Who  
Among Students in American Universities and Colleges  
1957

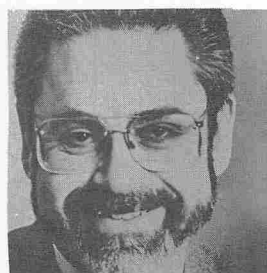


1953 Yearbook

**RICHARD SAUL WURMAN '53..** . Architect. . .  
 also an educator and city planner. . . designed Penn's  
 Landing, beach houses, has written books, urban atlases,  
 children's career guides. . . designed digital clock  
 in Philadelphia City Hall courtyard. . . founder,  
 President and Creative Director of Access Press,  
 Ltd.. . was student of Louis Kahn



**ROBERT E. SHOENBERG '53..** . Educator.. . Dean  
 for Undergraduate Studies at University of Maryland,  
 College Park.. . developed and implemented new  
 general education program... teaches English and  
 General Honors Program. . . author of numerous  
 professional publications. . . has been and is currently  
 consultant to many schools and organizations

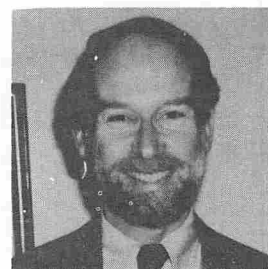


**ROBERT J. NUROCK '54.** . . Financial Analyst.  
 . . Consultant and Advisor to numerous investment  
 institutions and select group of individual investors.  
 . writes "Market Strategy Report" and other timely  
 investment publications. . . aided in productin of  
 first live public broadcasting stock market series.  
 . . designed Technical Market Index to forecast stock  
 prices and trends

**NICHOLAS D. MELAIR, JR.** '54. . . Township Manager. . . Cheltenham Township Manager and Chief Administrative Officer. . . oversees all township affairs under direction of elected Board of Commissioners. . . certified as registered professional engineer. . . Charter member Elkins Park Rotary, Board Glenside Fire Company



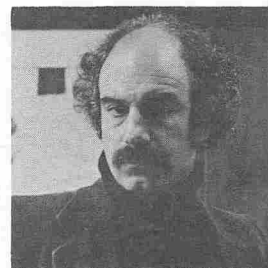
**WERNER L. GUNDERSHEIMER** '55. . . Professor of History.. . Director of Center for Italian Studies, University of Pennsylvania. . . specialty is Europe 1300-1600, emphasis on Italian and French intellectual, social and urban history. . . on Board of Rosenbach Museum (past Chairman). . . in Who's Who in America and Directory of American Scholars. . . Advisory Committee, Philadelphia Museum of Art



**TRINA SCHAT HYMAN** '56. . . Artist. . . has illustrated more than 100 children's books, written five. . . former Art Director, Cricket . . . designs greeting cards, posters, magazine covers, catalogue covers, porcelain figurines. . . mural in Fairbanks, Alaska, library. . . exhibitions in Boston, Vermont, New York and New Hampshire. . . Boston Globe/Horn Book Award in 1974 for King Stork

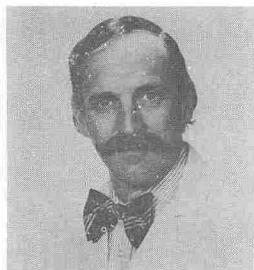


**ROBERT KOFFLER** '56. . . Artist. . . Pennsylvania Academy of Fine Arts and Art Institute of Philadelphia. . . full Professor, Moore College of Art. . . exhibitions and solo shows including Philadelphia Art Alliance. . . in prominent collections including Smithsonian Institution, New York Museum of Modern Art. . . current works in Makler and Portico galleries



**WILLIAM G. ROSENBERG** '56. . . Educator. . . History Professor and Director of the Center for Russian and East European Studies at University of Michigan. . . member Research and Development Committee, American Association for Advancement of Slavic Studies. . . author of two books, co-author of two others. . . numerous major articles. . . Guggenheim Fellowship 1982-83... international lecturer



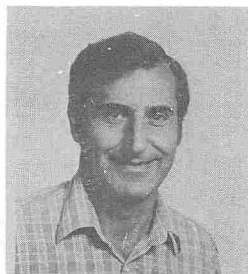


**JAMES L. MEYERHOFF '56.** . . Physician. . . Chief of Neuroendocrinology and Neurochemistry Branch, Dept. of Medical Neurosciences, Div. of Neuropsychiatry, Walter Reed Army Institute of Research. .. member several professional organizations. . . teaching soccer coach. .. world traveler. . . knowledge of four foreign languages. . . consultant, U.S. Army Medical Research and Development Command

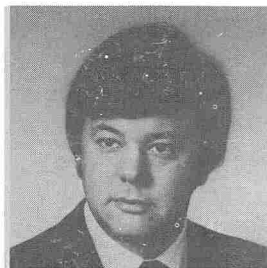


1956 Yearbook

**ARNOLD COHEN '56.** . . Law Professor. . . has written several legal textbooks. . . specialist in bankruptcy law. . . panel member for legal seminars. .. Professor of Law at Villanova Law School



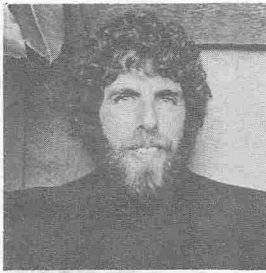
**ARTHUR LANDY '57.** . . Microbiologist. . . Professor of Medical Science, Division of Biology and Medicine, Section of Microbiology and Molecular Biology, Brown University. . . Associate Editor Cell. . . Recombinant DNA Advisory Committee, National Institutes of Health. . . Fellow, American Association for the Advancement of Science. . . numerous publications



**MICHAEL S. BROWN '58.** . . Physician/Geneticist. . . Professor of Internal Medicine, University of Texas, Southwestern Medical School, Dallas. . . co-recipient, Lita Annenberg Hazen Award for Excellence in Clinical Research presented by Mount Sinai Medical Center, New York City. . . involved with identifying how body's cells obtain cholesterol and how inherited defect in this mechanism can lead to heart attacks



**LINDA BRENNER '58.** . . Artist. . . teaches model making and basic design, Architecture Department, Spring Garden College, Philadelphia. . . 1982, commissioned to fabricate space study model of interior of the Rotunda and North Lobby of the National Gallery of Art, Washington, D.C. . . received many awards and has had several one-man shows in addition to participating in numerous group shows



**MYLES COLIN RADEMAN '62.** . . Environmental Planner. . . Director of Planning and Community Development, Crested Butte, Colorado (designated National Historic Area). . . was Fulbright Scholar and lecturer. . . attorney. . . Board of Western Colorado Rural Communities Institute. . . special consultant to groups in New Zealand and Malaysia. . . lectures to Sierra Club



**BRUCE FIFER '63.** . . Baritone. . . has sung in concert with many leading orchestras including Philadelphia and Boston. . . extensive operatic experience. . . often appears with chamber music organizations. . . has appeared on Public Broadcasting System. . . active in arts program of Cathedral Church of St. John the Divine in New York. . . specialist in oratorio presentations



**RANDALL BRECKER '63.** . . Musician. . . plays trumpet. . . has appeared on hundreds of best records in past years, soloing behind stars such as Bruce Springsteen, Paul Simon, James Taylor, Carly Simon, John Lennon and Janis Joplin. . . one of most respected and sought after studio musicians on east coast



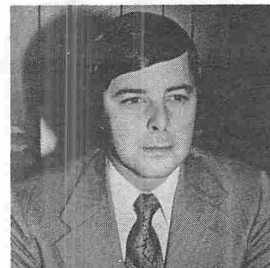
1963 Yearbook

**NANCY FALIK COTT '63.** . . Professor. . . Associate Professor of History and American Studies and Chair of Women's Studies Program, Yale University. . . teaching fields include women and the family from colonial era to present in United States, social and intellectual history of United States. . . numerous publications, lectures, papers. . . film consultant. . . several published books and articles

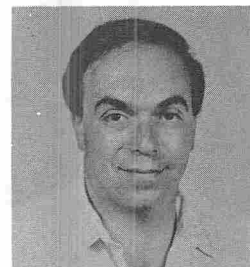


**EILEEN E. TYRALA '63.** . . Physician. . . Professor of Pediatrics, Temple University School of Medicine. . . assistant director of two units of St. Christopher's Hospital for Children. . . research on Copper and Zinc Metabolism in Low Birth Weight Infants and Nutritional Assessment of Pediatric Patient. . . author of numerous articles and abstracts in her field

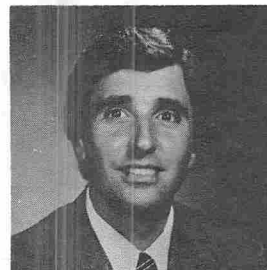
**RALPH H. GARRETH '61.** . . Business Executive.  
 . . Vice-President, Marketing, Aerospace and Industrial  
 Products Division, Standard Pressed Steel Technologies,  
 Inc. . . domestic and European responsibility. . . in  
Who's Who in Finance and Industry. . . former Air  
 Force pilot. . . member several professional and  
 technical organizations. . . savings and loan director



**JONATHAN ARONS '61.** . . Professor. . . teaches  
 Astronomy and Physics at University of California  
 at Berkeley. . . recipient of several National Science  
 Foundation grants and fellowships. . . was Guggenheim  
 Fellow. . . member, National Academy of Sciences  
 Physics Survey Panel on Space & Astrophysical Plasmas.  
 . . Vice Chairman, Division of Astrophysics, American  
 Physical Society



**DENIS A. CORTESE '62.** . . Physician. . . Associate  
 Professor of Medicine, Mayo Medical School. . .  
 consultant, Thoracic Diseases and Internal Medicine,  
 Mayo Clinic. . . Diplomat, Pulmonary Disease  
 Subspecialty Board, American Board of Internal  
 Medicine. . . research on bronchoscopic detection  
 and therapy of early bronchial carcinoma. . . Secretary,  
 Staff of Mayo Clinic



**ELIZABETH A. CATALDI '62.** . . Purchasing Agent.  
 . . employed by School District of Cheltenham  
 Township. . . has served as President of Cheltenham  
 High School Alumni Association for last five years.  
 . . recent recipient of The Chapel of the Four  
 Chaplains Award for dedication and service to others  
 and distinguished community work. . . avid racquetball  
 fan



**LAURIE COLWIN '62.** . . Author. . . writes novels  
 and poetry. . . has had short stories published in The  
New Yorker, Cosmopolitan, McCall's, Weekend,  
Redbook and Mademoiselle. . . has written Shine  
on Bright and Dangerous Object, Passion and Affect,  
Happy All the Time, The Lone Pilgrim, and Family  
Happiness





**DAVID W. MARSTON '60..** . Attorney. . . served as U.S. Attorney for Pennsylvania's Eastern District after appointment by then-President Ford. . . President and Board Chairman, Northeast Commuter Services Corp. . . Governor Thornburgh's representative to SEPTA Board. . . named Outstanding Young Man of the Year by Pennsylvania Junior Chamber of Commerce. . .



**ROBERT C. SOLOMON '60.** . . Professor of Philosophy. . . teaches at University of Texas. . . was visiting professor at Mount Holyoke and Harvard. . . author of a dozen books and many articles. . . recipient of several prestigious grants and awards.. . has written two published songs and authors two regular newspaper columns



1960 Yearbook

**FREDERICKA E. WAUGH '60.** . . Social Work Administrator. .. specialist in field of alcoholism. . . now Assistant Director of Mental Health Associate Degree Program, Hahnemann University's School of Allied Health Professions. . . member Delaware Valley Association of Black Psychologists. . . treasurer of Philadelphia area Task Force on Women and Addiction. . . officer of Philadelphia Shell Club



**RICHARD GOLDSTEIN '61.** . . Microbiologist. . . Associate Professor, Department of Microbiology and Molecular Genetics, Harvard Medical School. . . Ad Hoc reviewer for National Science Foundation. . . author and/or co-author of several research papers including six still in preparation. . . recipient of Mellon Fund Faculty Award 1975.. . Director, Electron Microscopy Facility at Harvard Medical School

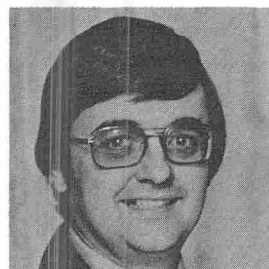


**GLENN H. DERRINGER '61.** . . Marketing Executive. . . Divisional Vice-President, Baldwin Piano and Organ. . . helped create first combination of organ and synthesizer for Wurlitzer. . . in early musical career many nationwide concert tours. . . responsible for development, marketing, merchandising and advertising of Baldwin's products. . . Secretary/Treasurer, National Association of Electronic Keyboard Manufacturers

**MARY ELLEN MARK '58.** . . Photojournalist. . . photographic exhibitions throughout world. . . has taught and lectured at numerous colleges and universities. . . work has appeared in all major magazines. . . several books published. . . has received numerous awards for documentary photographic work including Leica Medal of Excellence 1982



**HENRY R. "TED" TAYLOR '58.** . . Athletic Director. . . first full time Athletic Director, Spring Garden College, since 1974. . . Founding Director, Eastern Pennsylvania Athletic Conference.. . nationally syndicated sports/hobby columnist Sports Collectors Digest, Renninger's Antique Guide. . . Founding President, Eastern Pa. Sports Collectors Club. . . Co-Chairman, Phila. Baseball Card & Sports Memorabilia Show



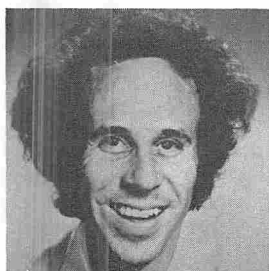
**ALLAN THOMAS '58.** . . Bus Driver. .. drives for Greyhound. . . enjoys traveling eastern seaboard from Canada to Florida. . . received special award certificate from State of Pennsylvania for stopping his bus to rescue a man and his daughter from a plane crash on the Pennsylvania Turnpike



**FRANCES FENKEL FREEDMAN '59.** . . Publisher. . . founder and publisher of Atlantic City Magazine. . . member of Board of Directors, Greater Atlantic City Chamber of Commerce. . . founder-sponsor of Flying Cloud marathon, Atlantic City. . . selected Woman of the Year 1983 by Greater Atlantic City Chamber of Commerce. . . originator, Atlantic City Magazine, Entertainer of the Year Awards



**KENNY SOLMS '60.** . . Writer/Producer. . . Writers Guild of America Award for "Carol Burnett Show". . . specials for numerous prominent show business talents. . . Peabody Award for "Sills and Burnett at the Met". . . new musical "Perfectly Frank". . . writing "Tearjerker" original screenplay for Carol Burnett. . . "Smothers Brothers Comedy Hour" and "Texaco Star Theatre's Salute to Broadway"



**DORIS REITINGER HELMS '63.** . . Biologist. . . honored by South Carolina Science Council for work to upgrade level of science education with establishment of Doris R. Helms Award for Science Education. . . Biologist/Department Chairman, Clemson University. . . helped develop summer courses for high school teachers and fifty lab exercises suitable for school districts with limited budgets



1963 Yearbook

**MARIE PULINI-FRANKS '63.** . . Physician. . . specializes in Endocrinology and Diabetes. . . Fellow of New York Diabetes Association and New York Academy of the Sciences. . . Assistant Professor of Clinical Medicine, New York University School of Medicine. . . Assistant Editor, Practical Diabetology. . . medical board member, Diabetes Self-Care Institute. . . many publications and abstracts



**BRUCE B. BRODY '66.** . . Musician. . . has toured United States and Europe with John Kale and Patty Smith. . . now has own group. . . composed, scored and arranged original background music for 36-piece orchestra (and performed in the orchestra) for moving picture "Diner" - one of ten best pictures of 1982



1966 Yearbook

**CHARLES J. STAMM '67.** . . Educator. . . teaches in Special Education Department of Cheltenham High School. . . Head Coach, Varsity Wrestling, ten years.. . founder Cheltenham Youth Wrestling Program. . . former Assistant Scoutmaster, Wyncote Troop 116.. . First Vice-President, Cheltenham High School Alumni Association. . . received Cheltenham Township Commissioner's "Community Service Award"



**MICHAEL BRECKER '67.** . . Musician. . . Saxophone specialist. . . has soloed behind entertainment giants such as Bruce Springsteen, Paul Simon, James Taylor, Carly Simon, John Lennon and Janis Joplin. . . one of most respected and versatile musicians on east coast recording studio scene





**BENJAMIN NETANYAHU '67.** . . Diplomat. . . Deputy Chief of Mission, Embassy of Israel, Washington, D.C. . . Board member and former Executive Director, Jonathan Institute, Jerusalem. . . editor of International Terrorism: Challenge and Response and The Letters of Jonathan Netanyahu. . . articles on the Middle East have appeared in major United States newspapers



**SUSAN BERNHEIM WINSTON '69.** . . Television Producer. . . Executive Producer of ABC's "Good Morning America". . . spent two years with "The Mike Douglas Show". . . started in Philadelphia producing children's specials and doing writing and research for special productions and a talk show. . . private airline pilot



**STEPHAN ROSENFELD '69.** . . Journalist. . . executive producer for news at ABC affiliate station in San Francisco. . . supervises daily newscasts and special news programs including recent ones on Grenada and series on Soviet spying in Silicon Valley. . . previously political writer for Philadelphia Daily News. . . former reporter and executive editor of KWY-TV, Philadelphia



**JOANNE A. EPPS '69.** . . Attorney. . . Assistant U.S. Attorney for Eastern District of Pennsylvania. . . former Deputy City Attorney, Los Angeles. . . member American Bar Association and National Bar Association, Women's Division. . . member Trinity College Board of Fellows. . . lecturer U.S. Attorney General's Advocacy Institute



**CRAIG K. LITTLEPAGE '69.** . . Coach. . . Head basketball coach, University of Pennsylvania. . . six seasons as Assistant Coach, University of Virginia. . . also coached at Yale University and Villanova University. . . graduate of Penn's Wharton School. . . led Cheltenham to State Championship tournament as high school player

**MARILYN M. MACHLOWITZ '70.** . . Psychologist. . . researcher, lecturer, corporate consultant. . . specializes in psychology of career-related issues. . . received three American Psychological Association awards. . . author of Workaholics. . . monthly column in Working Woman Magazine. . . frequent guest on radio and television. . . two books in progress. . . articles in New York Times and Wall Street Journal



**ADRIENNE MELTZER KRAMER '70.** . . Television Personality. . . hostess of magazine show WCBS-TV, New York, "Two on the Town". . . honored by New York Chapter, National Academy of Television Arts and Sciences for contributions toward Emmy Award. . . currently producing television pilot for David Susskind. . . was field reporter for "You Asked For It" before joining "Two on the Town"



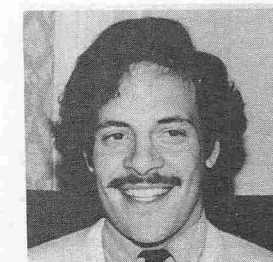
**ARLENE DERVITZ BRONSTEIN '72.** . . Ice Skater. . . spent three years touring United States skating professionally with Ice Capades. . . does artist and tour management. . . some on-camera work. . . has also done financial planning. . . assists husband in rock and roll record promotion firm. . . wed December 1983



**MAIDA MEYERS LOWIN '72.** ... Lawyer/Actress. . . recent law school graduate. . . has played leading roles on and off Broadway. . . several television commercials. . . entertained passengers while adrift in lifeboats after fire sank M.V. Prinsendam cruiseship in Alaskan Waters



**GLENN A. FINE '74.** . . Future Attorney. . . first Cheltenham graduate to be Rhodes Scholar. . . First Class Honors in Politics, Philosophy and Economics while at Oxford. . . now at Harvard Law School. . . academic and athletic awards while at Harvard College. . . drafted by National Basketball Association San Antonio Spurs in 1979.. . founding member Harvard-Cambridge Big Brothers Association



We also honor and remember . . . . .

**HAROLD CARTER PIKE '10**

*Former Cheltenham Township Manager . .  
fifty-four years service to the community*

**BENTON SPRUANCE '21**

*World reknown lithographer. . . former  
Chairman, Art Department, Beaver College*

**JOHN RODELL '22**

*Professor of Law, Yale University*

**ALBERT KAUFMAN '29**

*Head of Atomic Research Laboratories of  
Massachusetts Institute of Technology during  
World War II*

**CLARENCE JOHNSTON '30**

*Chief, Cheltenham Township Police Department  
for 36 years*

**WILMOT E. FLEMING '35**

*State Senator. . . original Board Member of  
Cheltenham High School Alumni Association*

**STANFORD WOLF '36**

*Past President, Paul Masson Wines, California*

**WHITNEY H. CARLETON '40**

*One of the founders of Cherry Hill Chamber  
of Commerce and its first President*

**BRETT TAYLOR '60**

*Founded The Aegean School of Fine Arts, Paros  
Cyclades, Greece*

## **CHELTENHAM HIGH SCHOOL ALUMNI ASSOCIATION**

### **CENTURY MEMBERS**

*Julian S. Bers 1927*  
*Frederick E. Bitting 1929*  
*Margaret Cloud Altdoerffer 1929*  
*James Farquhar 1930*  
*Ruth Openshaw Cowell 1930*  
*Grace E. Paist Wagner 1930*  
*Herbert K. Fleisher 1932*  
*Dr. Richard S. Koch 1932*  
*Eleanor Schaefer Krivin 1932*  
*Jack Wagman 1932*  
*William J. Thomson 1932*  
*Margaret Berg Hahn 1933*  
*Louise Bers Rose 1933*  
*Ruth Conner Detrick 1933*  
*Jane Gill Barry 1933*  
*Dr. Gordon Henry 1933\**  
*G. Paul Hoffman 1933*  
*Harry M. Meyers, Jr. 1933*  
*Lorraine Gabel 1934*  
*Anne Armstrong Campbell 1935*  
*William M.B. Fleming 1938*  
*Robert Morrison 1938*  
*Bobbette Sondheim Kamholz 1940*  
*Franklin C. Ketler, Jr. 1941*  
*William Eagleson, Jr. 1943*  
*David Schloss 1943*  
*Robert F. Lederer 1946*  
*Dr. Linda Nelson 1946*  
*Daniel E. Beren 1947*  
*Marjorie Fischman Shushan 1947*  
*Carol Subin Gold 1947*  
*George Knapp 1948*  
*William Link 1952*  
*Herman A. Regusters 1952*  
*Nancy E. Smailer Taylor 1952*  
*Ken Hart 1957*  
*Melvin Molnick 1961*  
*H. Laurence Reinhard, III 1962*  
*Ronald L. Tabas 1965*  
*Michael Brecker 1967*  
*David Starobin 1967*  
*Sanford Student 1972*

\* Deceased

**HALL OF FAME MEMBERS ELECTED JANUARY, 1981**

*Bernard B. Rothschild '32*

*Maxine Winokur Kumin '42*

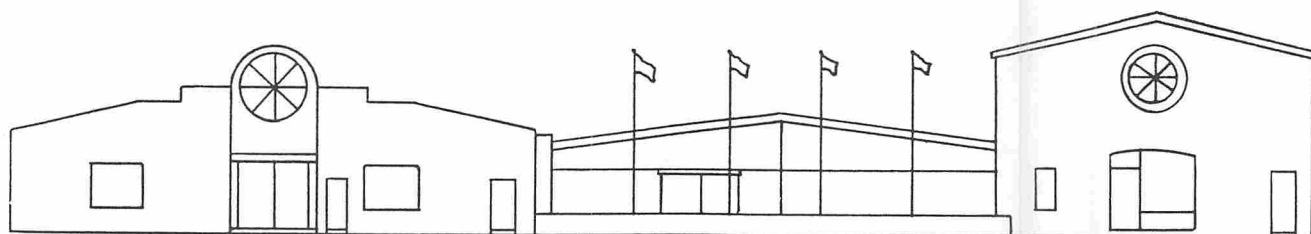
*William B. Eagleson, Jr. '43*

*Norma Levy Shapiro '45*

*Richard Levinson '52*

*William Link '52*

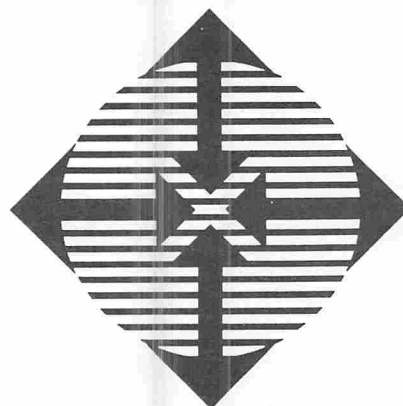
*Reginald Jackson '64*

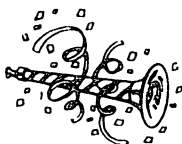


**ATD-AMERICAN** 135 GREENWOOD AVE. WYNCOTE PA. 19095

(215) 576-1000

**ATD**





## S.G.S. PAPER CO.

Largest selection of  
**PAPER & PARTY GOODS**  
at discount prices

**SPECIALIZING IN GREAT SAVINGS**

(Extra 15% off Party Goods w/Ad)

Excluding Sales Merchandise

Best of Philly  
'83

(215) 884-5791

#1 Rices Mill Rd.  
Wyncote, Pa. 19095

## Sousan Pharmacy

ELAINE HAAZ, B.Sc., R.Ph.

8029 York Road, Elkins Park, PA 19117

Phones ME 5-4200 — CA 4-1630

## PEARSON

### SPORTING GOODS

**1128** CHESTNUT ST.  
ON THE NEW CHESTNUT ST. TRANSITWAY  
DAILY 9-6:30, WED. TO 9 P.M.

FREE 1 HOUR PARKING AT  
10TH & LUDLOW OR APCOA INC.  
S.E. COR. 12TH & SANSON  
WITH PURCHASE

Let the PRO outfit your  
team from sandlot to  
major league!

See us for complete  
selection of trophies,  
plaques and awards

#### We Also Have Hard-to-Find Items

- TOBOGGANS
- BOCCE SETS
- LACROSSE EQUIPMENT
- FENCING EQUIPMENT
- HOCKEY EQUIPMENT
- RUGBY SHIRTS AND BALLS
- STOP WATCHES
- CHIPPAWA BOOTS

and Many Other Items  
Through Our Eight Departments

We Honor Five Major Credit Cards

**PEARSON  
THE  
OFFICIAL  
OUTFITTERS  
OF THE  
PROS**



Philadelphia Eagles



WE TELEGRAPH FLOWERS  
SUBURBAN AND PHILADELPHIA DELIVERY



*Dominick's Flowers*

*Distinctive Arrangements - Fruit Baskets*

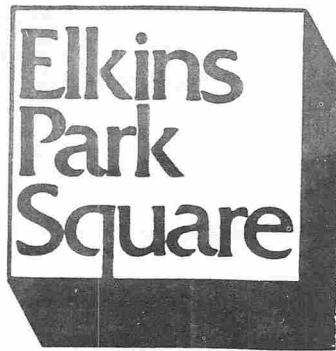
*Weddings Parties*

*Churches Funerals*

TURNER 4-5945  
5947

200 LIMEKILN PIKE  
GLENSIDE, PA. 19038  
OPPOSITE K. OF C.

CONGRATULATIONS TO CHELTENHAM HIGH SCHOOL ON ITS 100th ANNIVERSARY



YORK and CHURCH ROADS  
ELKINS PARK, PENNSYLVANIA

CONTEMPORARY, TWO-STORY GLASS  
ENCLOSED SHOPPING CENTER WITH  
FINE SHOPS AND RESTAURANTS

---

COMMERCIAL PRINTING  
MULTI-COLOR REPRODUCTION  
COMPOSITION

BUSINESS FORMS  
SNAP-OUT & CONTINUOUS  
REGISTER FORMS



GRAPHICS, INC.

ROBERT F. FENNELL  
ROBERT R. DEARDEN

7812 Rockwell Avenue  
Philadelphia, PA 19111  
(215) 745-2266

# **BRYNER CHEVROLET**

**ANNOUNCES**

**OUR NEW ADDITION**

## **AMC - JEEP - RENAULT**

*After 55 years as a Chevrolet dealership  
our new car lines are an exciting addition  
to our organization*

**BRYNER CHEVROLET/AMC/JEEP/RENAULT**

**140 YORK ROAD**

**JENKINTOWN, PENNSYLVANIA**

**886-3140**

**549-3140**

**SOLD**



**LANGSDORF-ADLER**

**635.1400**

8027 York Road  
Elkins Park, Pa., 19117